

**MANKATO RGNL** (MKT)(KMKT) 5 NE UTC-6(-5DT) N44°13.37' W93°55.16'

1021 B TPA—See Remarks NOTAM FILE MKT

**RWY 15-33:** H6600X100 (CONC-GRVD) S-60, D-120, 2D-155, 2D/2D2-237 HIRL

**RWY 15:** REIL. PAPI(P4L)—GA 3.0° TCH 48'.

**RWY 33:** MALS. PAPI(P4L)—GA 3.0° TCH 49'.

**RWY 04-22:** H4000X75 (ASPH) S-18, D-25 MIRL 0.3% up NE

**RWY 04:** REIL. PAPI(P4L)—GA 3.0° TCH 39'.

**RWY 22:** REIL. PAPI(P4L)—GA 3.0° TCH 26'.

**SERVICE:** S4 FUEL 100LL, JET A OX 4 LGT ACTIVATE REIL Rwy 04-22; PAPI Rwy 04-22; MIRL Rwy 04-22; MALS Rwy 33; REIL Rwy 15; PAPI Rwy 15-33; HIRL Rwy 15-33—CTAF.

**AIRPORT REMARKS:** Attended Mon-Fri 1300-0200Z, Sat-Sun 1400-0100Z. Fuel 100LL available 24hrs with credit card, after hrs call 507-469-0228. Deer on and in/ov arpt. Migratory waterfowl on and in/ov arpt. TPA—2000 (979) (LT TFC) for light act, 2500 (1479) (LT TFC) for turbine acct and 2000 (979) (RT TFC) for rotocraft acct. Intensive flight training. Calm wind Rwy 33.

**AIRPORT MANAGER:** 507-381-4174

**WEATHER DATA SOURCES:** AWOS-3PT 118.175 (507) 625-3726.

**COMMUNICATIONS:** CTAF/UNICOM 122.725

RCO 122.1R 110.8T (PRINCETON RADIO)

® MINNEAPOLIS CENTER APP/DEP CON 135.0

**AIRSPACE:** CLASS E svc 1100-0530Z Mon-Fri, 1300-1600Z & 1900-2200Z Sat, 2130-0530Z Sun other times CLASS G.

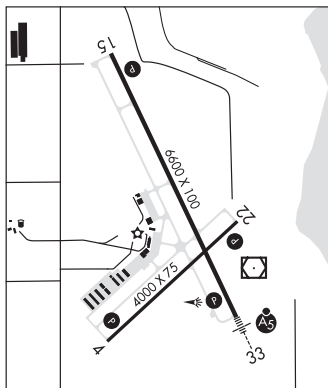
**RADIO AIDS TO NAVIGATION:** NOTAM FILE MKT.

(L) VOR/DME 110.8 MKT Chan 45 N44°13.19' W93°54.74' at fld. 1026/7E.

DME portion unusable:

325°-150° byd 16 NM

ILS 108.7 I-MKT Rwy 33. Class IT. Auto pilot coupled apch not applicable sfc-1200'.



OMAHA  
H-21, L-121, A  
IAP, AD

**MAPLE LAKE MUNI-BILL MAVENCAMP SR FLD** (MGG)(KMG) 1 NE UTC-6(-5DT) N45°14.16'

W93°59.14'

1028 B NOTAM FILE MGG

**RWY 10-28:** H2796X60 (ASPH) LIRL(NSTD)

**RWY 10:** Thld dspcd 100'. Tree.

**RWY 28:** Trees.

**SERVICE:** S4 FUEL 100LL LGT Rwy 10-28 NSTD LIRL, 400' spacing between lights; 20' from edge.

**AIRPORT REMARKS:** Unattended. Fuel avbl 24 hrs with credit card. Migratory waterfowl on and in/ov arpt. One tkof/ln/dg per flight ops, no tgl or training.

**AIRPORT MANAGER:** 320-963-3738

**WEATHER DATA SOURCES:** AWOS-3 128.325 (320) 963-3300.

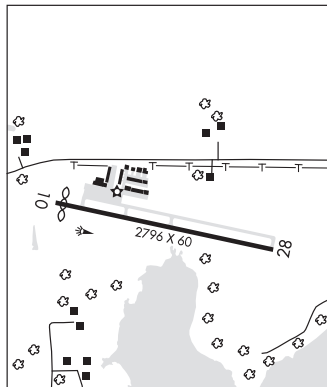
**COMMUNICATIONS:** CTAF/UNICOM 122.8

® MINNEAPOLIS APP/DEP CON 126.5

**RADIO AIDS TO NAVIGATION:** NOTAM FILE PNM.

DARWIN (L) VORTAC 109.0 DWN Chan 27 N45°05.25'

W94°27.23' 059° 21.8 NM to fld. 1130/7E.



TWIN CITIES  
L-14H, A  
IAP, AD