

ROCKY MOUNTAIN METROPOLITAN (BJC)(KBJC) 9 NW UTC-7(-6DT) N39°54.53'

DENVER

W105°07.03'

H-3F, 5A, L-10F, A

5673 B ARFF Index—See Remarks NOTAM FILE BJC

IAP, AD

RWY 12L-30R: H9000X100 (ASPH-GRVD) S-65, D-105, 2S-95, 2D-150 PCN 31 F/D/W/T HIRL

RWY 12L: REIL. PAPI(P4L)—GA 3.0° TCH 41'. 1.0% down.

RWY 30R: MALSR. PAPI(P4L)—GA 3.0° TCH 52'. Rgt t/c. 1.1% up.

RWY 12R-30L: H7002X75 (ASPH-GRVD) S-12.5 MIRL

1.1% up NW

RWY 12R: REIL. PAPI(P2L)—GA 3.0° TCH 40'. Rgt t/c.

RWY 30L: REIL. PAPI(P2L)—GA 3.0° TCH 41'.

RWY 03-21: H3600X75 (ASPH) S-40, D-45, 2D-65 MIRL

0.4% up S

RWY 03: PAPI(P2L)—GA 3.0° TCH 30'.

RWY 21: PAPI(P2L)—GA 3.0° TCH 40'. Rgt t/c.

RUNWAY DECLARED DISTANCE INFORMATION

RWY 03: TORA-3600 TODA-3600 ASDA-3600 LDA-3600

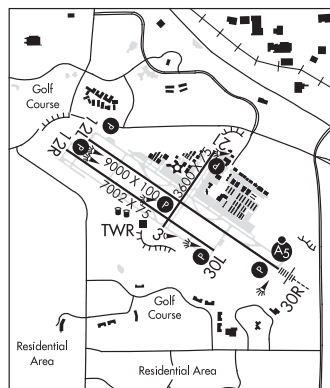
RWY 12L: TORA-9000 TODA-9000 ASDA-9000 LDA-9000

RWY 12R: TORA-7002 TODA-7002 ASDA-7002 LDA-7002

RWY 21: TORA-3600 TODA-3600 ASDA-3600 LDA-3600

RWY 30L: TORA-7002 TODA-7002 ASDA-7002 LDA-7002

RWY 30R: TORA-9000 TODA-9000 ASDA-9000 LDA-9000



SERVICE: S4 FUEL 100LL, JET A OX 1, 2, 3, 4 LGT When twr closed ACTIVATE MIRL Rwy 03-21, and Rwy 12R-30L, HIRL Rwy 12L-30R, MALSR Rwy 30R, PAPI Rwy 03, Rwy 21, Rwy 12L, Rwy 12R, Rwy 30L, and Rwy 30R and REIL Rwy 12L, Rwy 12R and Rwy 30L—CTAF.

AIRPORT REMARKS: Attended continuously. 100LL self svc. Birds and other wildlife on and in/ov rwys. Watch for wildlife on or near rwys. Helicopters arr/dep from rwys and twys. Pilots are requested to avoid flt over Standley Lake blo 8000' MSL. Jeffco VOR 150° 3.0 DME due to nesting eagles. Class II ARFF Index A, 24 hr PPR for unscheduled air carrier ops with more than 30 passengers seats call 720-352-0395. ARFF Index B also avbl PPR ctc arpt 720-352-0395. Voluntary noise abatement procedure in effect ctc noise office 303-271-4850. U.S. Customs user fee arpt. Twy C1 and Twy D only marked with reflectors. North terminal ramp slope exceeds FAA recommended stds. Flight Notification Service (ADCUS) avbl. NOTE: See Special Notices—Extensive Helicopter Flight Training. USAF 306 FTG Flight Training Areas, Vicinity of Colorado Springs and Pueblo Colorado.

AIRPORT MANAGER: (303) 271-4851

WEATHER DATA SOURCES: AWOS-3 (720) 887-8067

COMMUNICATIONS: CTAF 118.6 ATIS 126.25 303-466-8744

DENVER APP/DEP CON 126.1

METRO TOWER 118.6 (1300-0500Z±) GND CON 121.7 CLNC DEL 132.6

AIRSPACE: CLASS D svc 1300-0500Z± other times CLASS G.

RADIO AIDS TO NAVIGATION: NOTAM FILE BJC.

JEFFCO (H) VORW/DME 115.4 BJC Chan 101 N39°54.78' W105°08.34' 093° 1.0 NM to fld. 5737/11E.

VOR portion unusable:

226°-245° byd 36 NM blo 17,000'

246°-278° byd 30 NM blo 19,000'

279°-300° byd 34 NM blo 18,000'

DME unusable:

246°-278° byd 30 NM

ILS 111.7 I-BJC Rwy 30R. Class IA. Unmonitored when ATCT closed.

COMM/NAV/WEATHER REMARKS: Emerg frequency 121.5 not avbl at twr.

DOVE CREEK (8V6) 1 E UTC-7(-6DT) N37°45.89' W108°53.32'

DENVER

6975 TPA-7700(725) NOTAM FILE DEN

RWY 01-19: 4200X50 (DIRT) 1.0% up S

RWY 01: Fence.

RWY 19: Road.

AIRPORT REMARKS: Unattended. Arpt CLOSED when snow covered. Rwy 01-19 has -3' ditch along both sides rwy. Rwy 01 19 soft when wet. Rwy 01-19 rodent holes throughout. Unlimited vehicle use on arpt. Rwy 19 +12' ground 258' right of centerline parallel to extended centerline first 500'.

AIRPORT MANAGER: 970-677-2282

COMMUNICATIONS: CTAF 122.9

DOVE CREEK N37°48.52' W108°55.88' NOTAM FILE DEN.

DENVER

(H) VORTACV 114.6 DVC Chan 93 277° 20.8 NM to Monticello. 6990/14E.

H-3D, L-9D

RCO 122.5 (DENVER RADIO)