

MANKATO RGNL (MKT)(KMK) 5 NE UTC-6(-5DT) N44°13.37' W93°55.16'

OMAHA

1021 B TPA—See Remarks NOTAM FILE MKT

H-21, L-121, A

RWY 15-33: H6600X100 (CONC-GRVD) S-60, D-120, 2D-155, 2D/2D2-237 HIRL

IAP, AD

RWY 15: REIL. PAPI(P4L)—GA 3.0° TCH 48'.

RWY 33: MALS. PAPI(P4L)—GA 3.0° TCH 49'.

RWY 04-22: H4000X75 (ASPH) S-18, D-25 MIRL 0.3% up NE

RWY 04: REIL. PAPI(P4L)—GA 3.0° TCH 39'.

RWY 22: REIL. PAPI(P4L)—GA 3.0° TCH 26'.

SERVICE: S4 FUEL 100LL, JET A OX 4 LGT ACTIVATE REIL Rwy 04-22; PAPI Rwy 04-22; MIRL Rwy 04-22; MALS Rwy 33; REIL Rwy 15; PAPI Rwy 15-33; HIRL Rwy 15-33—CTAF.

AIRPORT REMARKS: Attended Mon-Fri 1300-0200Z, Sat-Sun 1400-0100Z. Fuel 100LL available 24hrs with credit card, after hrs call 507-469-0228. Deer on and invof arpt. Migratory waterfowl on and invof arpt. TPA—2000' (979') (LT TFC) for light acct, 2500' (1479') (LT TFC) for turbine acct and 2000' (979') (RT TFC) for rotocraft acct. Intensive flight training. Calm wind Rwy 33.

AIRPORT MANAGER: 507-381-4174

WEATHER DATA SOURCES: AWOS-3PT 118.175 (507) 625-3726.

COMMUNICATIONS: CTAF/UNICOM 122.725

RCO 122.1R 110.8T (PRINCETON RADIO)

® MINNEAPOLIS CENTER APP/DEP CON 135.0

AIRSPACE: CLASS E svc 1100-0530Z Mon-Fri, 1300-1600Z & 1900-2200Z Sat, 2130-0530Z Sun other times CLASS G.

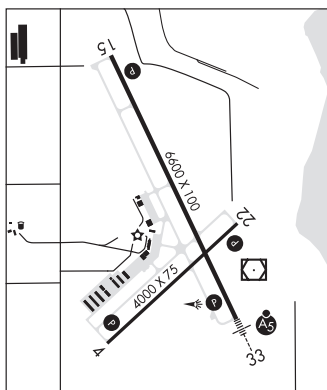
RADIO AIDS TO NAVIGATION: NOTAM FILE MKT.

(L) VOR/DME 110.8 MKT Chan 45 N44°13.19' W93°54.74' at fld. 1026/7E.

DME portion unusable:

325°-150° byd 16 NM

ILS 108.7 I-MKT Rwy 33. Class IT. Auto pilot coupled apch not applicable sfc-1200'.



MAPLE LAKE MUNI-BILL MAVENCAMP SR FLD (MGG)(KMG) 1 NE UTC-6(-5DT) N45°14.16'

TWIN CITIES

W93°59.14'

L-14H, A

1028 B NOTAM FILE MGG

IAP, AD

RWY 10-28: H2796X60 (ASPH) LIRL(NSTD)

RWY 10: Thld dspcd 100'. Tree.

RWY 28: Trees.

SERVICE: S4 FUEL 100LL LGT Rwy 10-28 NSTD LIRL, 400' spacing between lights; 20' from edge.

AIRPORT REMARKS: Attended Mon-Fri 1400-2300Z. Fuel avbl 24 hrs with credit card. Migratory waterfowl on and invof arpt. Only one tkof/Indg per flight opn, no tgl or training.

AIRPORT MANAGER: 320-963-3738

WEATHER DATA SOURCES: AWOS-3 128.325 (320) 963-3300.

COMMUNICATIONS: CTAF/UNICOM 122.8

® MINNEAPOLIS APP/DEP CON 126.5

RADIO AIDS TO NAVIGATION: NOTAM FILE PNM.

DARWIN (L) VORTAC 109.0 DWN Chan 27 N45°05.25'

W94°27.23' 059° 21.8 NM to fld. 1130/7E.

