

**KESTREL AIRPARK** (177) 23 N UTC—6—(5DT) N29°48.71' W98°25.56'

**SAN ANTONIO**  
L-19C

1261 NOTAM FILE SJT

**RWY 12-30:** H3000X40 (ASPH) LIRL(NSTD) 1.4% up NW

**RWY 12:** Trees.

**RWY 30:** Road. Rgt tfc.

**SERVICE:** S4 FUEL 100LL OX 1 LGT Rwy 12-30 NSTD LIRL, Rwy 12 lgts not at thld.

**AIRPORT REMARKS:** Attended continuously. Fuel self svc for assistance call arpt manager at 830-522-1885. Deer on and invof rwy. Rwy 30 rises rapidly at north end. Touch and go ldrs and low apchs prohibited for tran and coml acft, tkfs rstd btn 0400-1200Z. No helicopter training OPS allowed. Rwy 12-30 markings are faded.

**AIRPORT MANAGER:** (830) 522-1885

**COMMUNICATIONS:** CTAF/UNICOM 122.975

**RADIO AIDS TO NAVIGATION:** NOTAM FILE SAT.

**SAN ANTONIO (H) VORTACW** 116.8 SAT Chan 115 N29°38.64' W98°27.68' 002° 10.2 NM to fld. 1160/8E.  
HIWAS.

**COMM/NAV/WEATHER REMARKS:** For Cinc Del ctc SAT Apch at 210-805-5516.

**SAN ANTONIO INTL** (SAT)(KSAT) 7 N UTC-6—(5DT) N29°32.04' W98°28.14'

**SAN ANTONIO**  
H-7B, L-19C  
IAP, AD

809 B LRA Class I, ARFF Index C NOTAM FILE SAT

**RWY 04-22:** H8505X150 (CONC-GRVD) S-95, D-190, 2S-175,

2D-270 PCN 91 R/B/W/T HIRL CL

**RWY 04:** MALS. PAPI(P4R)—GA 3.0° TCH 79'. RVR-T Pole.  
0.3% down.

**RWY 22:** REIL. PAPI(P4L)—GA 3.0° TCH 85'. RVR-R 0.5% up.

**RWY 13R-31L:** H8502X150 (CONC-GRVD) S-95, D-190, 2D-270  
PCN 86 R/B/W/T HIRL CL

**RWY 13R:** ALSF2. TDZL. PAPI(P4L)—GA 3.0° TCH 75'. RVR-TMR

**RWY 31L:** MALS. PAPI(P4L)—GA 3.0° TCH 82'. RVR-TMR Bldg.

**RWY 13L-31R:** H5519X100 (ASPH) S-59, D-120 PCN 61 F/C/W/T  
MIRL

**RWY 13L:** REIL. PAPI(P4L)—GA 3.0° TCH 40'.

**RWY 31R:** REIL. PAPI(P4L)—GA 3.0° TCH 60'.

**RUNWAY DECLARED DISTANCE INFORMATION**

**RWY 04:** TORA-8505 TODA-8505 ASDA-8505 LDA-8505

**RWY 13L:** TORA-5519 TODA-5519 ASDA-5519 LDA-5519

**RWY 13R:** TORA-8502 TODA-8502 ASDA-8502 LDA-8502

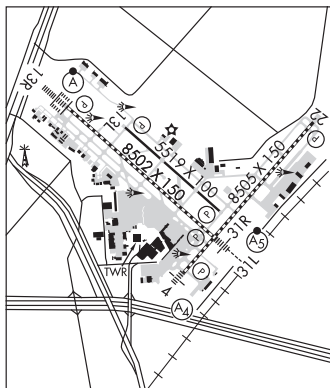
**RWY 22:** TORA-8505 TODA-8505 ASDA-8505 LDA-8505

**RWY 31L:** TORA-8502 TODA-8502 ASDA-8502 LDA-8502

**RWY 31R:** TORA-5519 TODA-5519 ASDA-5519 LDA-5519

**SERVICE:** S4 FUEL 100LL, JET A OX 1, 2, 3, 4

**AIRPORT REMARKS:** Attended continuously. Numerous flocks of birds invof arpt. Glider/soaring ops aprx 17 miles northwest of arpt dur VFR. Rwy 13L-31R not avbl part 121 for air carrier ops. Work in progress scheduled maintenance on and along twys and ramps areas at various times. Aerodrome all sfc work in progress for current info ctc ops 210-413-4928. Arpt restricted to acft with wingspan greater than 171', PPR with 24hr OPS 210-413-4928 required for authorization. PPR with arpt ops for acft powering back from terminal gates. Acft taxiing on Rwy 04 northeast bound look for hold short to Rwy 31L. Acft taxiing on Twy N southwest bound look for hold short to Rwy 31R. Apron East Cargo Ramp intersection of Rwy 04-22 and Twy D aircraft are requested to apply the minimum thrust when crossing the rwy to avoid damage due to jet blast. Twy Z clsd to acft with wingspan greater than 118'. The following twys are not avbl for acft 59,000 lbs or over: Twy A and Twy J north of Rwy 13R-31L, Twy M and Twy P, Twy H northwest of Twy Z and Twy E east of Rwy 04-22. Twy R west of Twy D clsd to acft over 270,000 lbs. Compass deviation may occur at the northwest portion of Twy R due to rebar reinforced conc bridge located under the twy. Inner ramp taxilane east of Terminal A is clsd to acft with wingspan greater than 135' exc for acft crossing the inner ramp to gates A1 to A5. Inner taxilane north of Terminal A and B is clsd to acft with wingspan greater than 135'. Acft at Terminal A and B advise gnd ctl prior to push. Twy L clsd northbound. Twys L and B clsd to acft with wingspan greater than 118' exiting Rwy 31L. Twy D non-movement area from Twy N to 500' west of Twy N. Twy R btn apch end Rwy 13L and Twy D clsd to acft wingspan more than 135'. Twy S btn apch end Rwy 13L and Rwy 13R-31L clsd to acft wingspan more than 135'. A barricaded pavement elev chg exists along the eastern side of the west ramp. Frequent rubber accumulation northwest 2500' Rwy 13R-31L. NS ABTMT Noise sensitive areas exist on all sides of arpt, at pilots discretion climb as quickly and quietly as safely possible on departure and use consideration when flying over populated areas by minimizing flt and high pwr settings. Military aircraft: Departing and arriving aircraft will use minimum power settings consistent with aircraft flight manuals, afterburner takeoff is prohibited unless required for safety of flight. Engine run-ups are permitted btn 1200-0500Z. Gnd run-up enclosure avbl 24 hrs. Terminal Gates A1, A5, A6, A7 and A8 use only with PPR call ops 210-413-4928. C130 and C141 type acft shall park on west ramp to clear cstmns. All intl general aviation clear U.S. Cstmns at south cstmns ramp, call U.S. CSTMS 210-821-6965 upon arr. Flight Notification Service (ADCUS) available. NOTE: See Special Notices—Continuous Power Facilities.



CONTINUED ON NEXT PAGE

SC, 12 OCT 2017 to 7 DEC 2017

## CONTINUED FROM PRECEDING PAGE

AIRPORT MANAGER: 210-207-3450

WEATHER DATA SOURCES: ASOS (210) 805-5583 HIWAS 116.8 SAT. WSP.

COMMUNICATIONS: D-ATIS 118.9 UNICOM 122.95

RCO 122.3 (SAN ANGELO RADIO)

④ APP/DEP CON 128.05 (091°-140°) 125.1 (271°-359°) 124.45 (360°-090°) 118.05 (141°-270°)

TOWER 119.8 GND CON 121.9 CLNC DEL 126.7

CPDLC (LOGON KSAT)

AIRSPACE: CLASS C svc ctc APP CON

VOR TEST FACILITY (VOT) 110.4

RADIO AIDS TO NAVIGATION: NOTAM FILE SAT.

(H) VORTACW 116.8 SAT Chan 115 N29°38.64' W98°27.68' 176° 6.6 NM to fld. 1160/8E. HIWAS.

ALAMO NDB (LOMW) 368 AN N29°36.46' W98°34.18' 125° 6.9 NM to fld. 960/5E.

ILS/DME 109.7 I-SAT Chan 34 Rwy 04. Class IB. Unmonitored.

ILS/DME 110.9 I-ANT Chan 46 Rwy 13R. Class IIE. LOM ALAMO NDB. DME also serves Rwy 31L. DME unusable 20° right of course.

ILS/DME 110.9 I-ZR Chan 46 Rwy 31L. Class IA. DME also serves Rwy 13R.

**SAN GERONIMO AIRPARK** (8TB) 10 W UTC-6(-5DT) N29°30.61' W98°47.91'

SAN ANTONIO

1040 NOTAM FILE SJT

L-19C

RWY 17-35: H3000X40 (ASPH) 1.1% up N

RWY 17: Tree.

RWY 35: Tree.

AIRPORT REMARKS: Unattended. No touch and go or stop and go lds at night. Limit 2 touch and go during daytime.

AIRPORT MANAGER: (210) 688-9072

COMMUNICATIONS: CTAF 122.9

RADIO AIDS TO NAVIGATION: NOTAM FILE SAT.

SAN ANTONIO (H) VORTACW 116.8 SAT Chan 115 N29°38.64' W98°27.68' 238° 19.4 NM to fld. 1160/8E. HIWAS.

COMM/NAV/WEATHER REMARKS: For Clnc Del ctc SAT Apch at 210-805-5516.

**STINSON MUNI** (SSF)(KSSF) 6 S UTC-6(-5DT) N29°20.22' W98°28.26'

SAN ANTONIO

577 B NOTAM FILE SSF

H-7B, L-19C

RWY 09-27: H5000X100 (ASPH) S-30, D-75 MIRL

IAP, AD

RWY 09: REIL. PAPI(P4L)—GA 3.0° TCH 40'. Thld dsplcd 450'. P-line.

RWY 27: REIL. PAPI(P4L)—GA 3.0° TCH 40'. Tree.

RWY 14-32: H4128X100 (ASPH) S-12, D-20 MIRL 0.5% up NW

RWY 14: REIL. PAPI(P4R)—GA 3.0° TCH 35'. Thld dsplcd 584'. Trees.

RWY 32: REIL. PAPI(P4L)—GA 3.0° TCH 40'. Thld dsplcd 372'. Trees.

SERVICE: S4 FUEL 100LL, JET A LGT MIRL Rwy 09-27 and Rwy

14-32 preset medium ints when twr clsd.

AIRPORT REMARKS: Attended 1300-0400Z†. Numerous acft opr at or abv 2,500' MSL in the Stinson Arpt traffic area under the ctl of San Antonio Apch. PAEW adjacent all twys and ramp areas Mon-Fri 1300-2359Z†.

AIRPORT MANAGER: 210-207-1800

WEATHER DATA SOURCES: ASOS (210) 927-9391 LAWRs.

COMMUNICATIONS: CTAF 118.2 ATIS 128.8 UNICOM 122.95

④ SAN ANTONIO APP/DEP CON 125.7

TOWER 118.2 (1300-0400Z†) GND CON 121.7 CLNC DEL 121.7

AIRSPACE: CLASS D svc 1300-0400Z† other times CLASS G.

RADIO AIDS TO NAVIGATION: NOTAM FILE SAT.

SAN ANTONIO (H) VORTACW 116.8 SAT Chan 115 N29°38.64'

W98°27.68' 174° 18.4 NM to fld. 1160/8E. HIWAS.

(L) VORW 108.4 SSF N29°15.50' W98°26.61' 334° 4.9 NM to fld. 540/9E. NOTAM FILE SSF.

VOR unusable:

111°-149° byd 10 NM

150°-159° byd 7 NM

160°-170°

205°-235°

occasional fm broadcast interference occurs on freq 108.4

COMM/NAV/WEATHER REMARKS: For Clnc Del when ATCT is clsd ctc SAT Apch at 210-805-5516.

