

PRESCOTT

ERNEST A LOVE FLD (PRC)(KPRC) 7 N UTC-7 N34°39.29' W112°25.15'

5045 B TPA—See Remarks Class I, ARFF Index A NOTAM FILE PRC

RWY 03R-21L: H7619X150 (ASPH-PFC) S-63, D-80, 2S-101, 2D-100

PCN 8 F/D/Y/T MIRL 0.9% up SW

RWY 03R: REIL. PAPI(P4L)—GA 4.1° TCH 45'. Thld dspcd 379'. Road. Rgt tfc.

RWY 21L: MALSR. PAPI(P4L)—GA 3.0° TCH 52'. Rgt tfc.

RWY 03L-21R: H4846X60 (ASPH) S-12.5 PCN 2 F/D/X/T MIRL 0.8% up SW

RWY 03L: PAPI(P2L)—GA 3.0° TCH 40'. Thld dspcd 811'. Rgt tfc.

RWY 21R: PAPI(P2L)—GA 3.0° TCH 40'. Rgt tfc.

RWY 12-30: H4408X75 (ASPH) S-12.5 PCN 10 F/C/Y/T MIRL 0.6% up SE

RWY 12: REIL. PAPI(P2L)—GA 4.24° TCH 48'. Thld dspcd 150'.

RWY 30: REIL. PAPI(P2L)—GA 3.6° TCH 40'.

LAND AND HOLD—SHORT OPERATIONS

LDG RWY	HOLD—SHORT POINT	AVBL LDG DIST
RWY 21L	12-30	5904

RUNWAY DECLARED DISTANCE INFORMATION

RWY 03L: TORA-4846 TODA-4846 ASDA-4846 LDA-4037
RWY 03R: TORA-7619 TODA-7619 ASDA-7619 LDA-7240
RWY 12: TORA-4408 TODA-4408 ASDA-4408 LDA-4258
RWY 21L: TORA-7619 TODA-7619 ASDA-7619 LDA-7619
RWY 21R: TORA-4846 TODA-4846 ASDA-4608 LDA-4608
RWY 30: TORA-4408 TODA-4408 ASDA-4258 LDA-4308

SERVICE: S4 **FUEL** 100LL, JET A **LGT** Rwy 30 PAPI unusable byd 3 NM. After 0500Z—ACTIVATE MALSR Rwy 21L, REIL Rwy 03R, PAPI Rwy 03R and Rwy 21L—CTAF. ACTIVATE REIL Rwy 12 and Rwy 30, PAPI Rwy 12 and Rwy 30, MIRL Rwy 12-30 frequency 128.75.

AIRPORT REMARKS: Attended 1300-0500Z. Fuel avbl 1400-0400Z call 928-443-9333. After hrs avbl per advance request. Self svc fuel rstd to acft with wingspan 50' or less. Rwy 03L-21R CLOSED 0500-1300Z. Wildlife invov rwys and twys. Fld cond not monitored 2200-0500 local. Acft departing Rwy 21L continue rwy heading until across highway and make immediate left turn. 20' drop off 300' from apch end Rwy 12. Rwy 21L designated calm wind rwy. Use caution on Rwy 12-30 for chg in rwy grad at Rwy 03R-21L int. Rwy 03L-21R not avbl for air carrier ops. Twy B rstd to acft with wingspan 45' or less. Winch tow in use up to 2500' AGL approximately 6NM east at Goodwin Memorial Gliderport. Overnight parking fee. TPA for light acft all rwys 6045(1000). TPA for large acft, all turbo prop/jet and high performance acft all rwys 6545(1500). Voluntary noise abatement procedures in effect—ctc arpt opr 928-777-1150. Ldg fee for tran commercial acft 12,500 lbs or greater based upon maximum certificated ldg weight. NOTE: See Special Notices—Extensive Flight Training in the vicinity of Ernest A. Love Field, Prescott, AZ.

AIRPORT MANAGER: 928-777-1114

WEATHER DATA SOURCES: ASOS (928) 717-1287

COMMUNICATIONS: CTAF 125.3 ATIS 127.2 UNICOM 122.95

PRESCOTT RCO 255.4 (PRESCOTT RADIO)

® **PHOENIX APP/DEP CON** 133.575

PRESCOTT TOWER 125.3 (1300-0500Z) **GND CON** 121.7 **PRESCOTT CLNC DEL** 119.25

AIRSPACE: CLASS D svc 1300-0500Z other times CLASS E.

VOR TEST FACILITY (VOT) 110.0

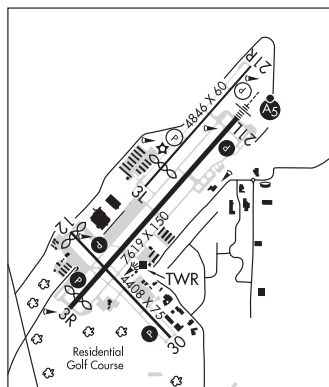
RADIO AIDS TO NAVIGATION: NOTAM FILE PRC.

DRAKE (H) VORTACW 114.1 DRK Chan 88 N34°42.15' W112°28.82' 119° 4.2 NM to fld. 4967/14E.

VOR/DME & TACAN AZIMUTH unusable:

055°-080° byd 29 NM blo 9,300'
 125°-140° byd 35 NM blo 8,500'
 140°-160° byd 30 NM blo 9,500'
 160°-175° byd 35 NM blo 9,500'
 175°-185° byd 30 NM blo 9,500'
 185°-195° byd 23 NM blo 9,100'
 195°-220° byd 13 NM blo 9,100'
 220°-235° byd 25 NM blo 9,100'
 265°-275° byd 30 NM blo 8,800'

ILS/DME 108.5 I-PRC Chan 22 Rwy 21L. Class IA. ILS/DME unmonitored 0500-1300Z.



PHOENIX
 H-4J, L-8F
 IAP AD

ROBLES N32°04.44' W111°21.62' NOTAM FILE PRC.

NDB (MHW) 220 RBJ 2607/12E. NDB unmonitored.

PHOENIX
 L-5C

ROLLE AIRFIELD (See SAN LUIS on page 67)