

POLACCA (P10) 3 SW UTC-7 N35°47.50' W110°25.40'
5573 TPA—6398(825) NOTAM FILE PRC

DENVER
L-8G

RWY 04-22: H4200X50 (ASPH) RWY LGTS(NSTD)

RWY 04: Brush.

RWY 22: Brush.

SERVICE: LGT Rwy 04-22 LIRL solar powered lighting system. Rwy 04-22 LIRL OTS indef.

AIRPORT REMARKS: Unattended. Rwy 04-22 rough, has numerous large cracks, patches, holes, and loose rock. Rocks piled, in circle, around wind indicator. Rwy 04-22 has 1-3' brush 45' from centerline both sides full length of rwy. Road crossing rwy. Wash in safety zone. This aprt underlies a Military Operations Area (MOA). Pilots need to be aware of all restrictions and check for any NOTAMS in advance of flying through the MOA. Solar powered blue perimeter lgts at corners of parking ramp.

AIRPORT MANAGER: 928-738-2228

COMMUNICATIONS: CTAF 122.9

RADIO AIDS TO NAVIGATION: NOTAM FILE PRC.

TUBA CITY (H) VORTAC 113.5 TBC Chan 82 N36°07.28' W111°16.18' 100° 45.7 NM to fld. 5045/15E.

PRESCOTT

ERNEST A LOVE FLD (PRC)(KPRC) 7 N UTC-7 N34°39.29' W112°25.15'
5045 B TPA—See Remarks Class I, ARFF Index A NOTAM FILE PRC

PHOENIX
H-4J, L-8F
IAP, AD

RWY 03R-21L: H7619X150 (ASPH-PFC) S-63, D-80, 2S-101, 2D-100

PCN 8 F/D/Y/T MIRL 0.9% up SW

RWY 03R: REIL. PAPI(P4L)—GA 4.1° TCH 45'. Thld dspclcd 379'. Road. Rgt tfc.

RWY 21L: MALSR. PAPI(P4L)—GA 3.0° TCH 52'. Rgt tfc.

RWY 03L-21R: H4846X60 (ASPH) S-12.5 PCN 2 F/D/X/T MIRL

0.8% up SW

RWY 03L: PAPI(P2L)—GA 3.0° TCH 40'. Thld dspclcd 811'. Rgt tfc.

RWY 21R: PAPI(P2L)—GA 3.0° TCH 40'. Rgt tfc.

RWY 12-30: H4408X75 (ASPH) S-12.5 PCN 10 F/C/Y/T MIRL

0.6% up SE

RWY 12: REIL. PAPI(P2L)—GA 4.24° TCH 48'. Thld dspclcd 150'.

RWY 30: REIL. PAPI(P2L)—GA 3.6° TCH 40'.

LAND AND HOLD—SHORT OPERATIONS

LDG RWY	HOLD—SHORT POINT	AVBL LDG DIST
RWY 21L	12-30	5500

RUNWAY DECLARED DISTANCE INFORMATION

RWY 03L: TORA-4846	TODA-4846	ASDA-4846	LDA-4037
RWY 03R: TORA-7619	TODA-7619	ASDA-7619	LDA-7240
RWY 12: TORA-4408	TODA-4408	ASDA-4408	LDA-4258
RWY 21L: TORA-7619	TODA-7619	ASDA-7619	LDA-7619
RWY 21R: TORA-4846	TODA-4846	ASDA-4608	LDA-4608
RWY 30: TORA-4408	TODA-4408	ASDA-4258	LDA-4308

SERVICE: S4 FUEL 100LL, JET A LGT Rwy 30 PAPI unusable byd 3 NM. After 0500Z ACTIVATE MALSR Rwy 21L, REIL Rwy 03R, PAPI Rwy 03R, Rwy 21L, MIRL Rwy 03R-21L—CTAF. ACTIVATE REIL Rwy 12 and Rwy 30, PAPI Rwy 12 and Rwy 30, MIRL Rwy 12-30 frequency 128.75.

AIRPORT REMARKS: Attended 1300-0500Z. Fuel avbl 1400-0400Z call 928-443-9333. After hrs avbl per advance request. Self svc fuel rstd to acft with wingspan 50' or less. Rwy 03L-21R CLOSED 0500-1300Z. Wildlife infov rwys and twys. Fld cond not monitored 2200-0500 local. Acft departing Rwy 21L continue rwy heading until across highway and make immediate left turn. 20' drop off 300' from apch end Rwy 12. Rwy 21L designated calm wind rwy. Twy B rstd to acft with wingspan 45' or less. Winch tow in use up to 2500' AGL approximately 6NM east at Goodwin Memorial Gliderport. Overnight parking fee. TPA for light acft all rwys 6045(1000). TPA for large acft, all turbo prop/jet and high performance acft all rwys 6545(1500). Voluntary noise abatement procedures in effect—ctc aprt opr 928-777-1150. Ldg fee for tran commercial acft 12,500 lbs or greater based upon maximum certificated ldg weight. NOTE: See Special Notices—Extensive Flight Training in the vicinity of Ernest A. Love Field, Prescott, AZ.

AIRPORT MANAGER: 928-777-1114

WEATHER DATA SOURCES: ASOS (928) 717-1287

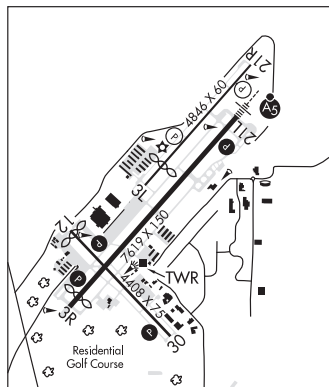
COMMUNICATIONS: CTAF 125.3 ATIS 127.2 UNICOM 122.95

PRESCOTT RCO 122.2 (PRESCOTT RADIO)

Ⓡ **PHOENIX APP/DEP CON** 133.575

PRESCOTT TOWER 125.3 (1300-0500Z) **GND CON** 121.7 **PRESCOTT CLNC DEL** 119.25

AIRSPACE: CLASS D svc 1300-0500Z other times CLASS E.



CONTINUED ON NEXT PAGE

CONTINUED FROM PRECEDING PAGE

VOR TEST FACILITY (VOT) 110.0

RADIO AIDS TO NAVIGATION: NOTAM FILE PRC.

DRAKE (H) VORTACW 114.1 DRK Chan 88 N34°42.15' W112°28.82' 119° 4.2 NM to fld. 4967/14E.

VOR/DME & TACAN AZIMUTH unusable:

- 055°-080° byd 29 NM blo 9,300'
- 125°-140° byd 35 NM blo 8,500'
- 140°-160° byd 30 NM blo 9,500'
- 160°-175° byd 35 NM blo 9,500'
- 175°-185° byd 30 NM blo 9,500'
- 185°-195° byd 23 NM blo 9,100'
- 195°-220° byd 13 NM blo 9,100'
- 220°-235° byd 25 NM blo 9,100'
- 265°-275° byd 30 NM blo 8,800'

ILS/DME 108.5 I-PRC Chan 22 Rwy 21L. Class IA. ILS/DME unmonitored 0500-1300Z.

ROBLES N32°04.44' W111°21.62' NOTAM FILE PRC.

NDB (MHW) 220 RBJ 2607/12E. NDB unmonitored.

PHOENIX
L-5C

ROLLE AIRFIELD (See SAN LUIS on page 64)

RYAN FLD (See TUCSON on page 71)

SAFFORD RGNL (SAD)(KSAD) 3 E UTC-7 N32°51.20' W109°38.11'

3179 B TPA-4179(1000) NOTAM FILE SAD

RWY 12-30: H6006X100 (ASPH) S-33 MIRL

RWY 12: PAPI(P2L)-GA 3.0° TCH 23'. Brush.

RWY 30: PAPI(P2L)-GA 3.0° TCH 20'.

RWY 08-26: H4799X75 (ASPH) S-23 MIRL 0.4% up E

RWY 08: PAPI(P2L)-GA 3.0° TCH 23'. Fence.

RWY 26: PAPI(P2L)-GA 3.0° TCH 22'. Fence.

SERVICE: S4 **FUEL** 100LL, JET A+ **OX** 1, 2, 3, 4 **LGT** ACTIVATE PAPI

Rwy 08 and Rwy 26, MIRL Rwy 08-26, PAPI Rwy 12 and Rwy 30, MIRL Rwy 12-30-CTAF.

AIRPORT REMARKS: Attended Mon-Sat 1500-0030Z, Sun on call. Fuel 24 hr credit card svc avbl, 100LL only. Svc avbl on call 24 hrs 928-428-7820. Emergency phone 928-428-7820.

AIRPORT MANAGER: (928) 432-4261

WEATHER DATA SOURCES: ASOS 124.175 (928) 428-5178.

COMMUNICATIONS: CTAF/UNICOM 122.8

RCO 122.3 (PRESCOTT RADIO)

ALBUQUERQUE CENTER APP/DEP CON 134.45

RADIO AIDS TO NAVIGATION: NOTAM FILE PRC.

SAN SIMON (H) VORTACW 115.4 SSO Chan 101 N32°16.15'

W109°15.79' 319° 39.7 NM to fld. 3600/13E. **HIWAS.**

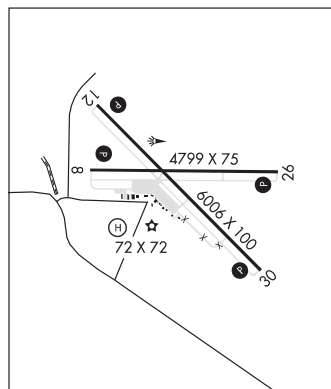
VOR & TACAN AZIMUTH unusable:

- 020°-050° byd 30 NM blo 8,000'
- 150°-190° byd 28 NM blo 11,300'
- 190°-220° byd 30 NM blo 9,000'
- 235°-250° byd 30 NM blo 9,900'
- 350°-360° byd 30 NM blo 8,000'

DME unusable:

- 020°-050° byd 30 NM blo 8,000'
- 150°-190° byd 28 NM blo 11,300'
- 190°-220° byd 30 NM blo 9,000'
- 235°-250° byd 30 NM blo 12,500'
- 350°-360° byd 30 NM blo 8,000'

• • • • •
HELIPAD H1: H72X72 (CONC) MIRL



PHOENIX
H-4K, L-5C
IAP