

VORTAC FGT 115.7 Chan 104	APP CRS 085°	Rwy Idg 4099 TDZE 961 Apt Elev 961
---	------------------------	---

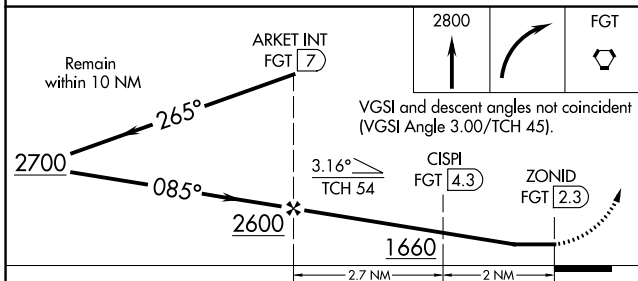
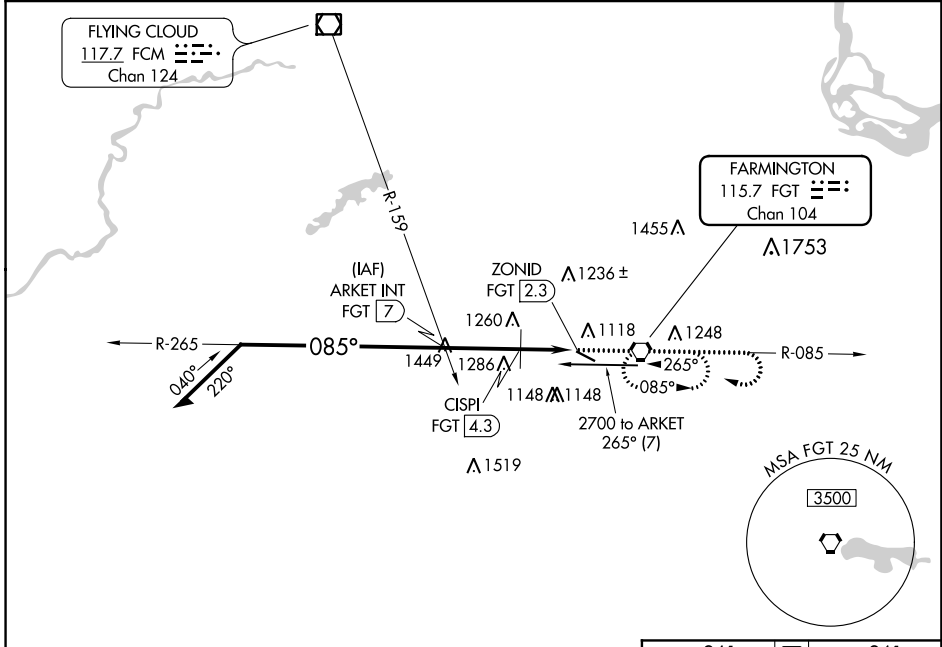
VOR RWY 12

AIRLAKE (LVN)

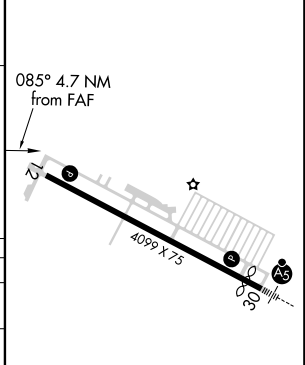
⚠ Rwy 12 helicopter visibility reduction below 1 SM NA. Straight-in Rwy 12, Circling Rwy 12 at night, operational VGSI required, remain on or above VGSI glidepath until threshold.

MISSED APPROACH: Climb to 2800 then right turn direct FGT VORTAC and hold.

AWOS-3 118.0	MINNEAPOLIS APP CON 134.7 284.7	CLNC DEL 118.95	UNICOM 123.0 (CTAF)
------------------------	---	---------------------------	-------------------------------



ELEV 961 **D** TDZE 961



CATEGORY	A	B	C	D
S-12	1660-1	699 (700-1)	1660-2	699 (700-2)
CIRCLING	1660-1	699 (700-1)	1660-2 699 (700-2)	1700-2¼ 739 (800-2¼)
CISPI FIX MINIMUMS				
S-12	1520-1	559 (600-1)	1520-1½	559 (600-1½)
CIRCLING	1520-1	559 (600-1)	1660-2 699 (700-2)	1700-2¼ 739 (800-2¼)

REIL Rwy 12 **Ⓛ**
HIRL Rwy 12-30 **Ⓛ**

FAF to MAP 4.7 NM

Knots	60	90	120	150	180
Min:Sec	4:42	3:08	2:21	1:53	1:34

NC-1, 23 MAY 2019 to 20 JUN 2019

NC-1, 23 MAY 2019 to 20 JUN 2019