

WAAS CH 86525 W32A	APP CRS 321°	Rwy Idg TDZE Apt Elev	5507 996 998
--	------------------------	-----------------------------	---

RNAV (GPS) RWY 32

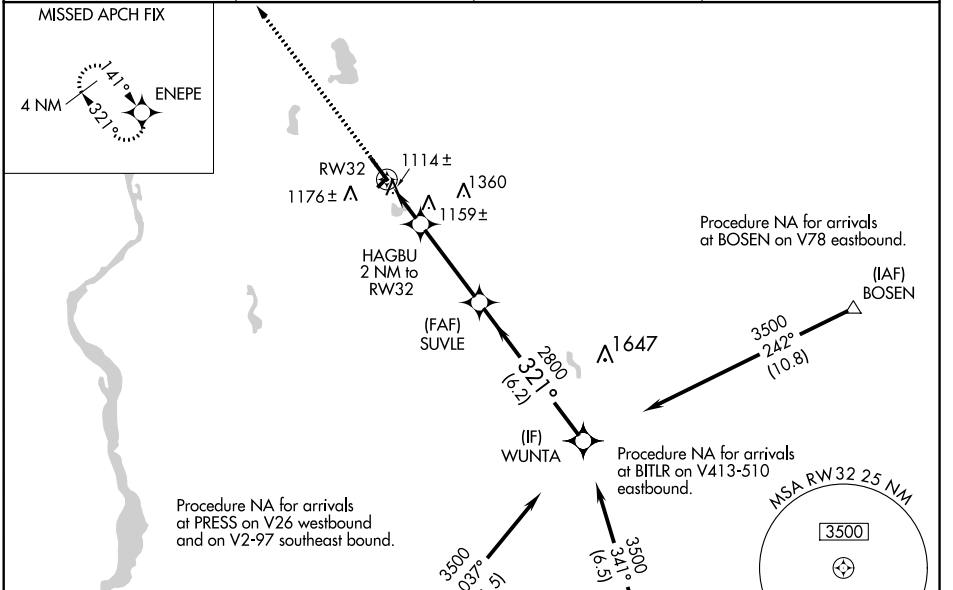
NEW RICHMOND RGNL (RNH)

RNP APCH.

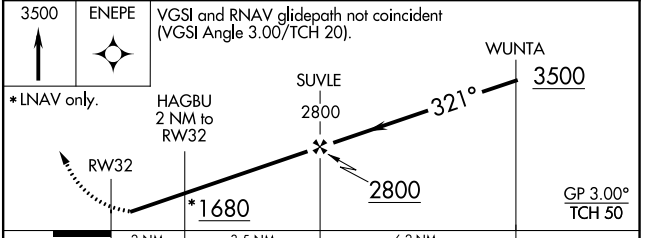
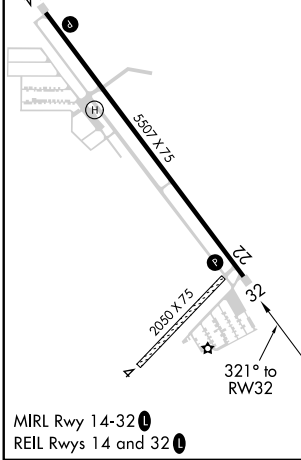
⚠ Baro-VNAV NA when using Osceola altimeter setting. For uncompensated Baro-VNAV systems, LNAV/VNAV NA below -16°C (4°F) or above 37°C (98°F). Rwy 32 helicopter visibility reduction below 3/4 SM NA. When local altimeter setting not received, use Osceola altimeter setting and increase all DA/MDA 40 feet; increase LNAV visibility Cats C and D 1/2 SM and Circling Cats C and D 1/4 SM. Circling to Rwy 4, 22 NA.

⚠ MISSED APPROACH: Climb to 3500 direct ENEPE and hold.

AWOS-3 120.0	MINNEAPOLIS APP CON 121.2 335.65	GCO 121.725	UNICOM 122.975 (CTAF) ⓪
------------------------	--	-----------------------	--



ELEV 998	TDZE 996
----------	----------



CATEGORY	A	B	C	D
LPV DA		1246-1	250 (300-1)	
LNAV/VNAV DA		1295-1	299 (300-1)	
LNAV MDA	1420-1	424 (500-1)	1420-1 1/4	424 (500-1 1/4)
C CIRCLING	1540-1	542 (600-1)	1660-1 3/4	1660-2
			662 (700-1 3/4)	662 (700-2)