

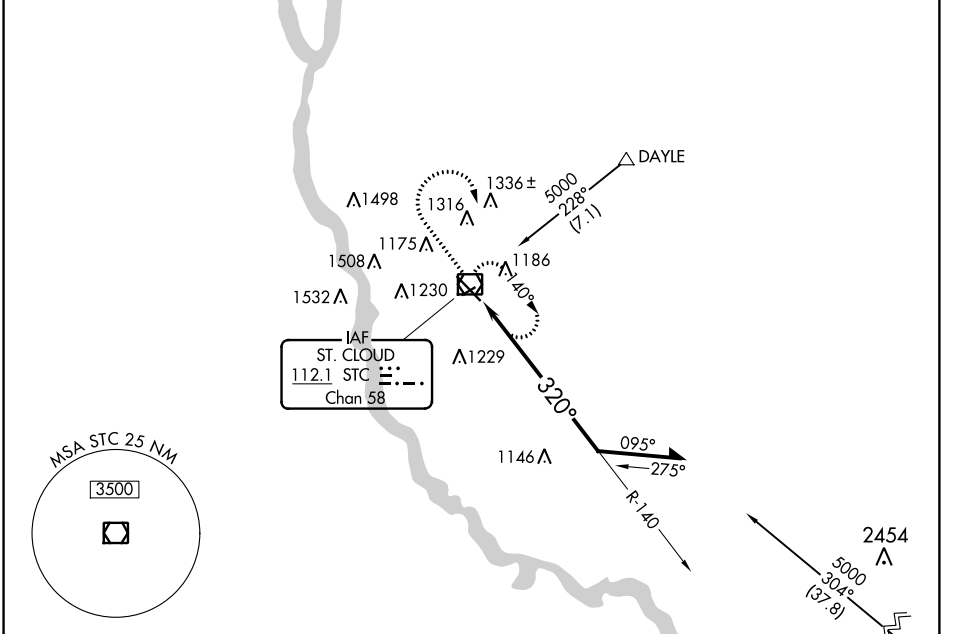
VOR/DME STC	APP CRS	Rwy Idg TDZE	7000
112.1	320°	Apt Elev	1020
Chan 58			1031

VOR RWY 31

ST CLOUD RGNL (STC)

For inop ALS, increase S-31 Cat C and D visibility to 1 3/8 SM.		MISSED APPROACH: Climb to 2700 then right turn direct STC VOR/DME and hold.

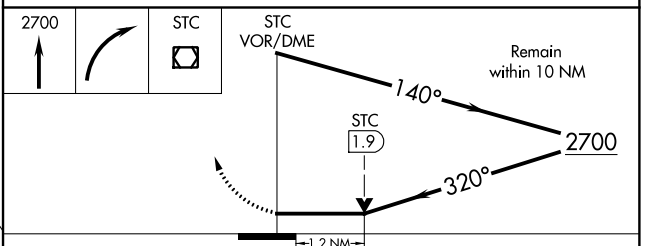
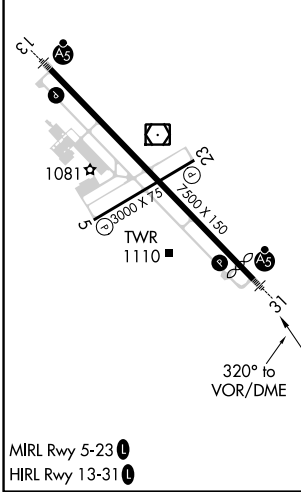
ATIS 119.375	MINNEAPOLIS CENTER 121.05 397.9	ST. CLOUD TOWER ★ 118.25 (CTAF) 0	GND CON 123.75	PRINCETON RADIO 122.5	UNICOM 123.5
------------------------	---	---	--------------------------	---------------------------------	------------------------



NC-1, 23 MAY 2019 to 20 JUN 2019

NC-1, 23 MAY 2019 to 20 JUN 2019

ELEV 1031	D	TDZE 1020
-----------	----------	-----------



CATEGORY	A	B	C	D
S-31	1460-1/2	440 (500-1/2)	1460-3/4 440 (500-3/4)	1460-1 440 (500-1)
CIRCLING	1500-1	469 (500-1)	1500-1 1/2 469 (500-1 1/2)	1620-2 589 (600-2)