

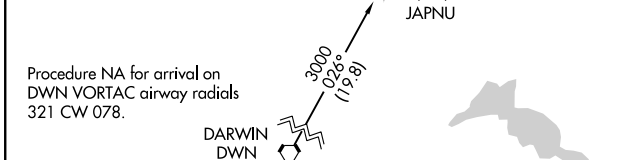
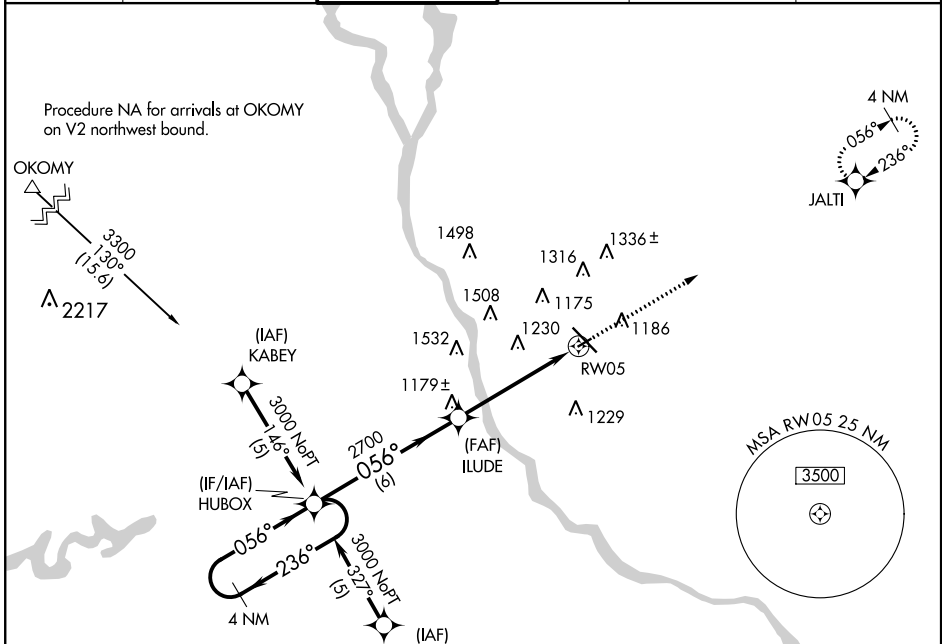
APP CRS	Rwy Idg	3000
056°	TDZE	1022
	Apt Elev	1031

RNAV (GPS) RWY 5

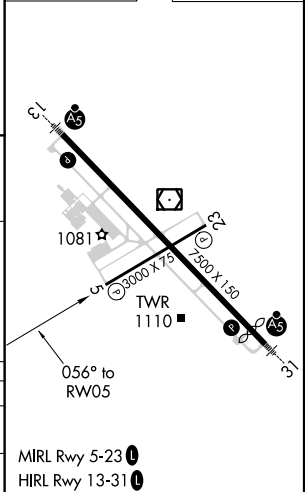
ST CLOUD RGNL (STC)

▼ Rwy 5 helicopter visibility reduction below 3/4 SM NA. DME/DME RNP-0.3 NA. VDP NA
▲ when using Little Falls altimeter setting. When local altimeter setting not received, use Little Falls altimeter setting and increase all MDA 80 feet and LNAV Cat C visibility 1/8 SM.
MISSED APPROACH: Climb to 3000 direct JALTI and hold.

ATIS 119.375	MINNEAPOLIS CENTER 121.05 397.9	ST. CLOUD TOWER ★ 118.25 (CTAF) 0	GND CON 123.75	PRINCETON RADIO 122.5	UNICOM 123.5
------------------------	---	---	--------------------------	---------------------------------	------------------------



ELEV 1031	D	TDZE 1022
-----------	----------	-----------



CATEGORY	A	B	C	D
LNAV MDA	1480-1	458 (500-1)	1480-1 3/8 458 (500-1 3/8)	NA
CIRCLING	1500-1	469 (500-1)	1500-1 1/2 469 (500-1 1/2)	NA

NC-1, 23 MAY 2019 to 20 JUN 2019

NC-1, 23 MAY 2019 to 20 JUN 2019