

ILS or LOC RWY 31

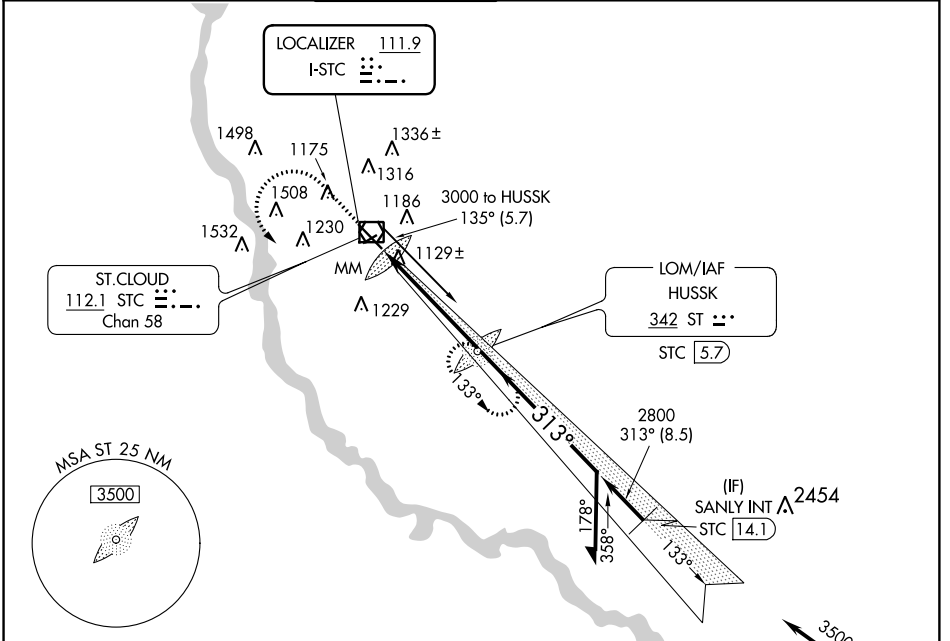
ST CLOUD RGNL (STC)

LOC I- STC	APP CRS 313°	Rwy Idg 7000
111.9		TDZE 1020
		Apt Elev 1031

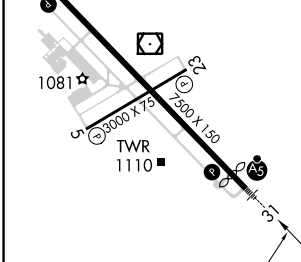
V VDP NA when using Little Falls altimeter setting. When local altimeter setting not received, use Little Falls altimeter setting and increase all DA 76 feet and all MDA 80 feet and increase S-LOC 31 Cat C/D visibility 1/8 SM. ADF Required.

MALSR MISSED APPROACH: Climb to 3000 then left turn direct HUSSK LOM and hold.

ATIS 119.375	MINNEAPOLIS CENTER 121.05 397.9	ST. CLOUD TOWER ★ 118.25 (CTAF) 0	GND CON 123.75	PRINCETON RADIO 122.5	UNICOM 123.5
---------------------	--	--	-----------------------	------------------------------	---------------------



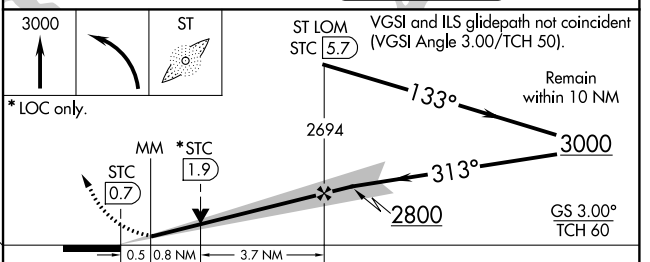
ELEV 1031	D	TDZE 1020
-----------	----------	-----------



FAF to MAP 5 NM					
Knots	60	90	120	150	180
Min:Sec	5:00	3:20	2:30	2:00	1:40

Procedure NA for arrival on GEP VORTAC airway radials 260 CW 352.

IAF GOPHER **117.3 GEP** Chan 120



CATEGORY	A	B	C	D
S-ILS 31	1220-1/2 200 (200-1/2)			
S-LOC 31	1480-1/2 460 (500-1/2)	1480-7/8 460 (500-7/8)		
CIRCLING	1500-1 469 (500-1)	1500-1 1/2 469 (500-1 1/2)	1620-2 589 (600-2)	

NC-1, 23 MAY 2019 to 20 JUN 2019

NC-1, 23 MAY 2019 to 20 JUN 2019