

WAAS CH 45615 W15A	APP CRS 151°	Rwy ldg TDZE Apt Elev	6600 1020 1021
--	------------------------	-----------------------------	---

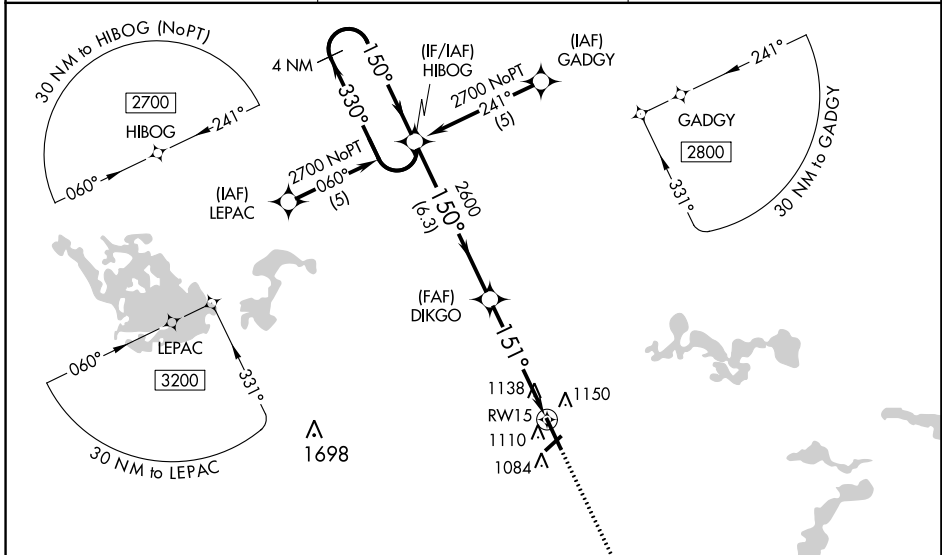
RNAV (GPS) RWY 15

MANKATO RGNL (MKT)

Baro-VNAV NA when using Waseca altimeter setting. For uncompensated Baro-VNAV systems, LNAV/VNAV NA below -17°C (2°F) or above 46°C (114°F). DME/DME RNP-0.3 NA.
 When local altimeter setting not received, use Waseca altimeter setting; increase LPV DA to 1430 feet, LNAV/VNAV DA to 1473 feet and visibility LPV ¼ mile and LNAV/VNAV ½ mile all Cats; increase all MDA 60 feet and visibility LNAV Cat C and D ¼ mile.

MISSED APPROACH: Climb to 2900 direct ANIMY and hold.

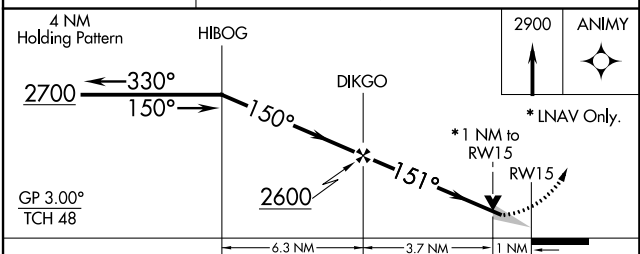
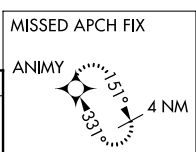
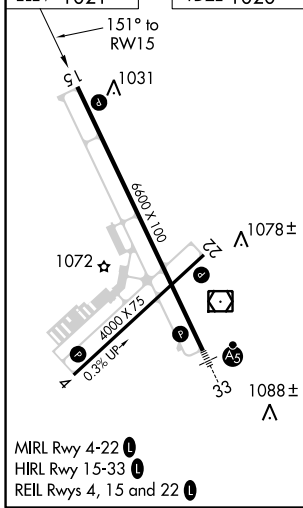
AWOS-3PT 118.175	MINNEAPOLIS CENTER 135.0 306.9	UNICOM 122.725 (CTAF) 1
----------------------------	--	--



NC-1, 23 MAY 2019 to 20 JUN 2019

NC-1, 23 MAY 2019 to 20 JUN 2019

ELEV 1021	TDZE 1020
-----------	-----------



CATEGORY	A	B	C	D
LPV DA		1373-1½	353 (400-1½)	
LNAV/VNAV DA		1416-1¾	396 (400-1¾)	
LNAV MDA		1400-1	380 (400-1)	
CIRCLING	1460-1	1480-1	1480-1½	1580-2
	439 (500-1)	459 (500-1)	459 (500-1½)	559 (600-2)