


LOC I-MKT 108.7	APP CRS 331°	Rwy Idg 6600 TDZE 1021 Apt Elev 1021
---------------------------	------------------------	---

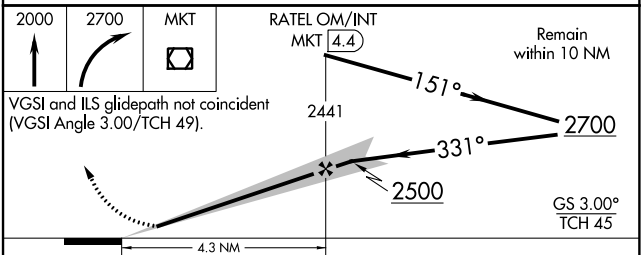
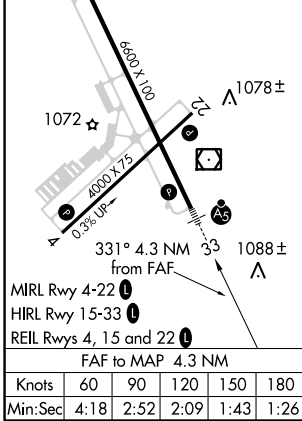
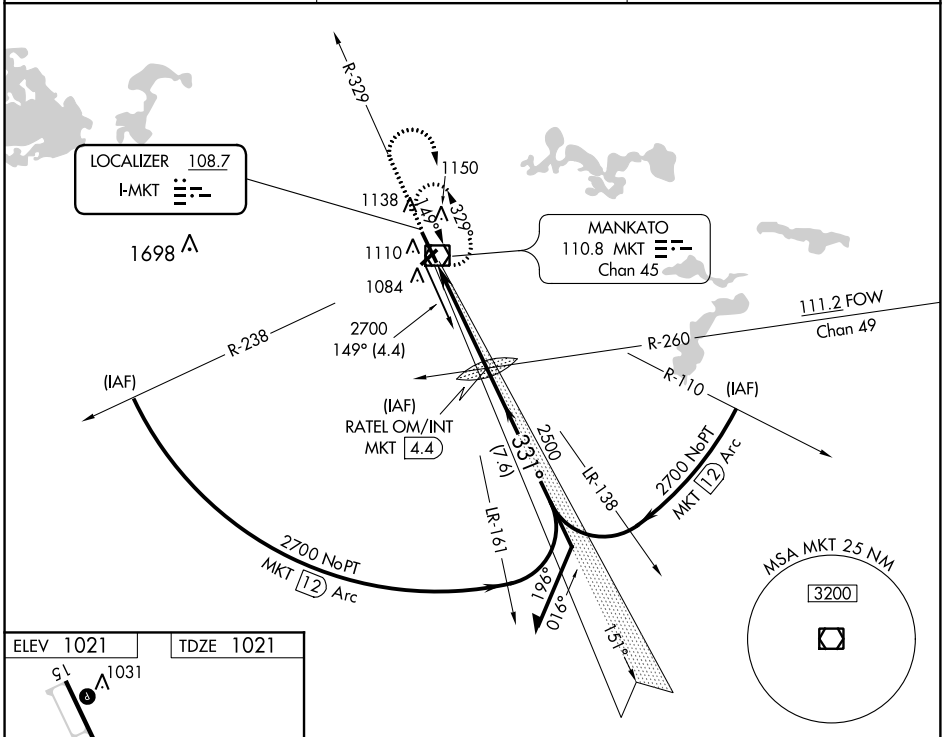
ILS or LOC RWY 33

MANKATO RGNL (MKT)

⚠ For inop MALSR when using Waseca altimeter setting, increase S-ILS 33 all Cats visibility to ½ mile. When local altimeter setting not received, use Waseca altimeter setting: increase DA to 1278 feet; increase all MDA 60 feet and visibility Cats C and D ¼ mile.

MALSR

MISSED APPROACH: Climb to 2000 then climbing right turn to 2700 direct MKT VOR/DME and hold.

AWOS-3PT 118.175	MINNEAPOLIS CENTER 135.0 306.9	UNICOM 122.725 (CTAF) 📻
----------------------------	--	--



CATEGORY	A	B	C	D
S-ILS 33	1221-½ 200 (200-½)			
S-LOC 33	1420-½	399 (400-½)	1420-⅝	399 (400-⅝)
CIRCLING	1460-1 439 (500-1)	1480-1 459 (500-1)	1480-1½ 459 (500-1½)	1580-2 559 (600-2)

NC-1, 23 MAY 2019 to 20 JUN 2019

NC-1, 23 MAY 2019 to 20 JUN 2019