

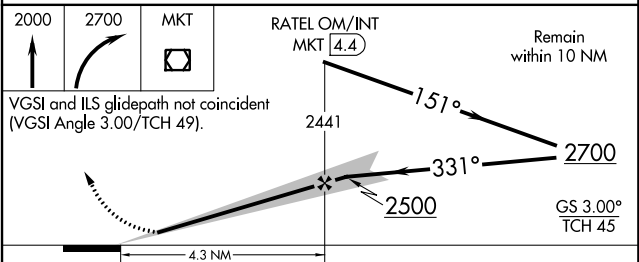
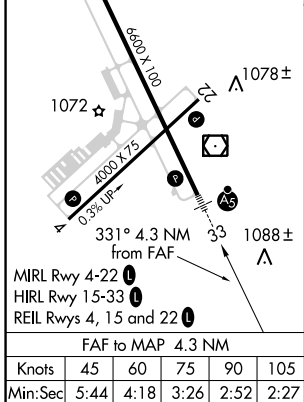
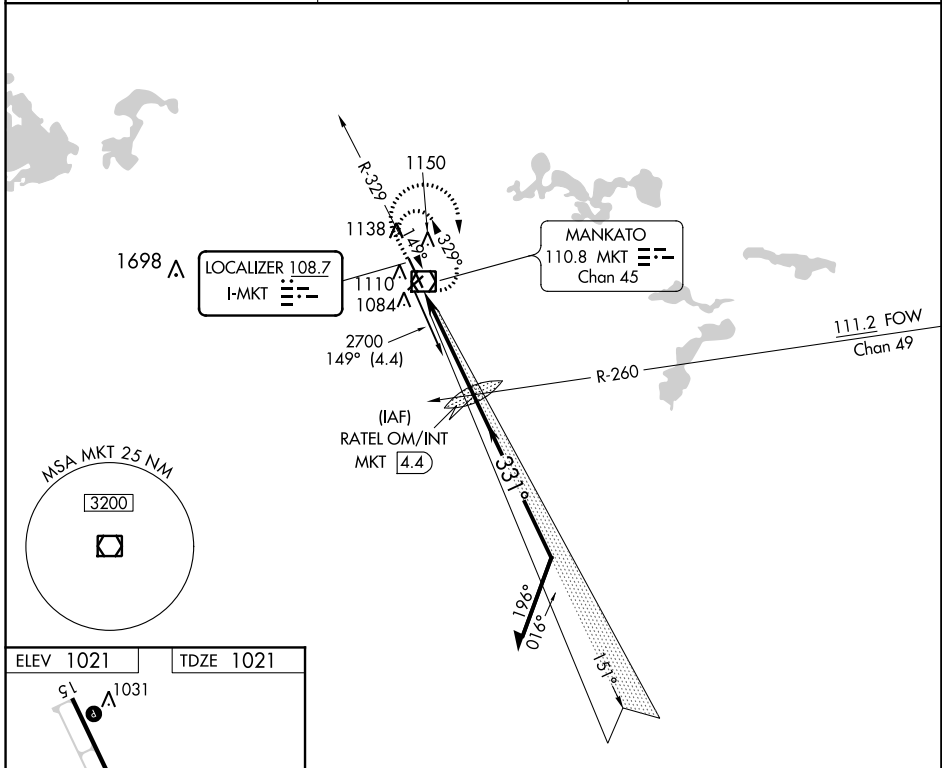
LOC I-MKT <b>108.7</b>	APP CRS <b>331°</b>	Rwy Idg <b>6600</b> TDZE <b>1021</b> Apt Elev <b>1021</b>
---------------------------	------------------------	---

# COPTER ILS or LOC RWY 33

MANKATO RGNL (MKT)

<p>▼ For inoperative MALSRS increase visibility to ½ mile. When local altimeter setting not received, use Waseca altimeter setting: increase DA to 1278 feet; increase MDA 60 feet.</p>	<p>MALSRS</p>	<p>MISSED APPROACH: Climb to 2000 then climbing right turn to 2700 direct MKT VOR/DME and hold.</p>
---	---------------	---

AWOS-3PT <b>118.175</b>	MINNEAPOLIS CENTER <b>135.0 306.9</b>	UNICOM <b>122.725 (CTAF)</b>
----------------------------	--	---------------------------------



CATEGORY	COPTER	B	C	D
S-ILS 33	1221-¼ 200 (200-¼)		NA	
S-LOC 33	1420-¼ 399 (400-¼)		NA	
CIRCLING		NA		