


WAAS CH <b>86627</b> <b>W30A</b>	APP CRS <b>302°</b>	Rwy ldg <b>5500</b> TDZE <b>1145</b> Apt Elev <b>1145</b>
--	------------------------	---

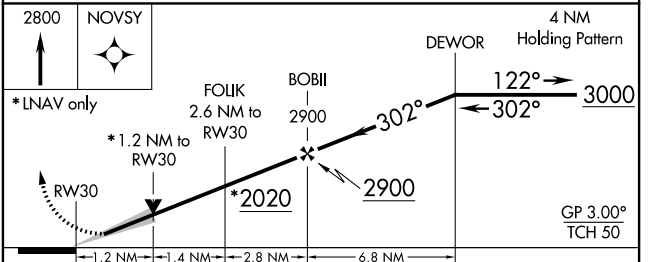
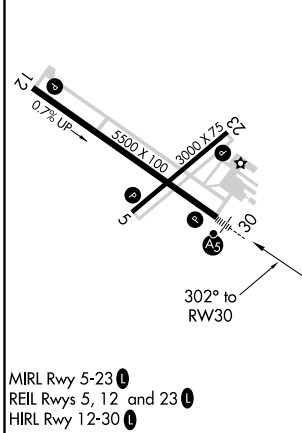
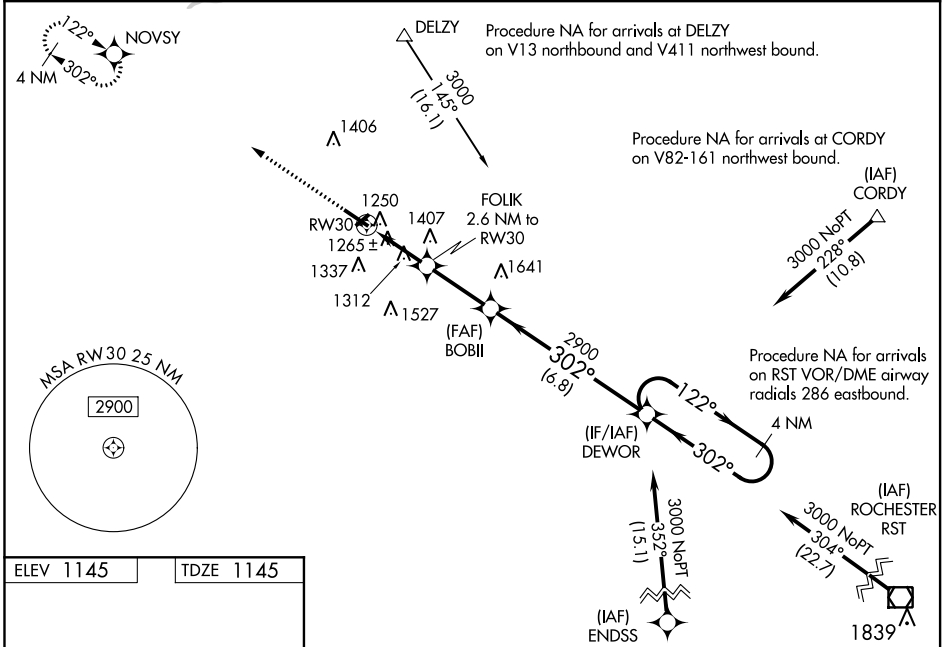
# RNAV (GPS) RWY 30

OWATONNA DEGNER RGNL (OWA)

**⚠** For uncompensated Baro-VNAV systems, LNAV/VNAV NA below -17°C (2°F) or above 54°C (130°F). DME/DME/RNP-0.3 NA. When local altimeter setting not received, use Fairbault altimeter setting and increase all DA 41 feet and all MDA 60 feet. Increase LNAV/VNAV all Cats visibility to 1½ mile, increase LNAV Cats C/D visibility to 1 mile, Cat C Circling visibility to 1¾ mile and Cat D visibility to 2½ mile. VDP and Baro-VNAV NA when using Fairbault altimeter setting. For inop MALSRL increase LNAV/VNAV all Cats visibility to 1¾ miles. For inop MALSRL, when using Fairbault altimeter setting, increase LNAV/VNAV all Cats visibility to 1½ mile, LNAV Cats C/D visibility to 1¾ mile.

MALSRL  
  
**MISSED APPROACH:**  
 Climb to 2800 direct  
 NOVSY and hold.

AWOS-3 <b>128.325</b>	ROCHESTER APP CON * <b>119.8 251.125</b>	UNICOM <b>122.7 (CTAF) 0</b>
--------------------------	---	---------------------------------



CATEGORY	A	B	C	D
LPV DA	1345-½		200 (200-½)	
LNAV/VNAV DA	1567-1		422 (500-1)	
LNAV MDA	1580-½	435 (500-½)	1580-¾	435 (500-¾)
<b>C</b> CIRCLING	1640-1 495 (500-1)	1700-1 555 (600-1)	1720-1½ 575 (600-1½)	1880-2¼ 735 (800-2¼)

NC-1, 23 MAY 2019 to 20 JUN 2019

NC-1, 23 MAY 2019 to 20 JUN 2019