

WAAS CH <b>82627</b> W12A	APP CRS <b>122°</b>	Rwy Idg <b>5500</b> TDZE <b>1127</b> Apt Elev <b>1145</b>
---------------------------------	------------------------	---

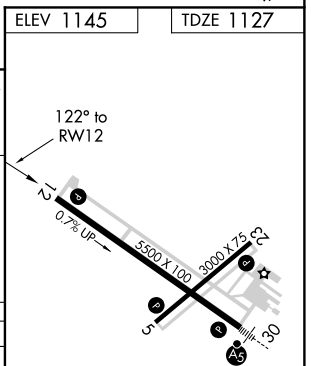
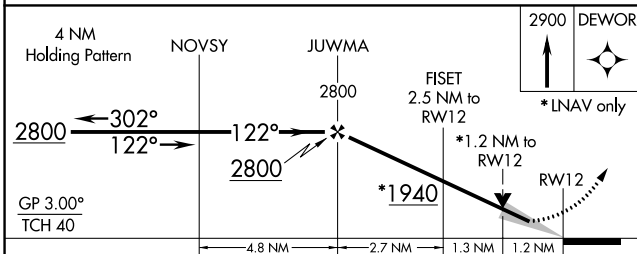
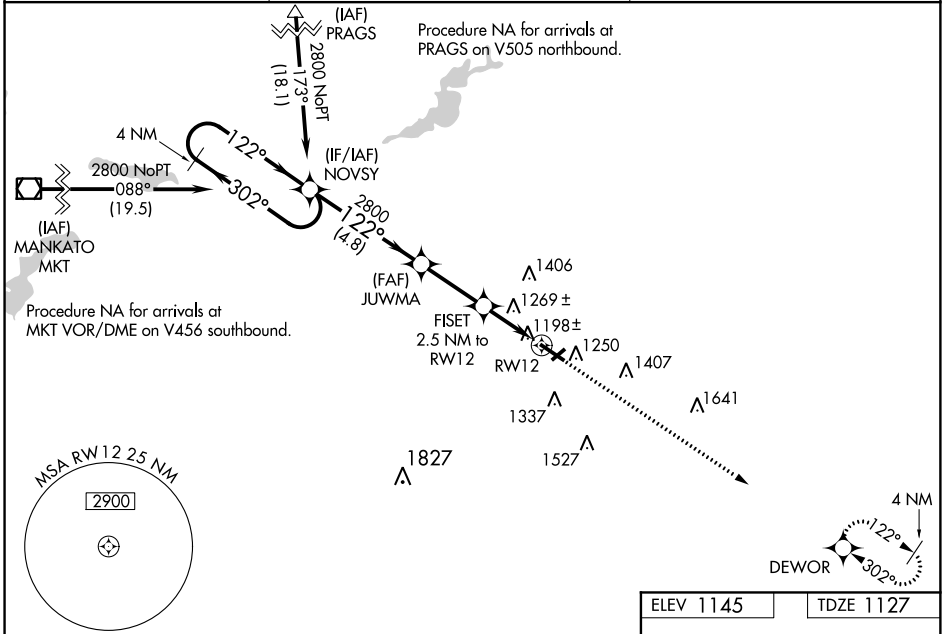
# RNAV (GPS) RWY 12

OWATONNA DEGNER RGNL (OWA)

**⚠** Baro-VNAV NA when using Faribault altimeter setting. For uncompensated Baro-VNAV systems, LNAV/VNAV NA below -17°C (2°F) or above 36°C (96°F). DME/DME RNP-0.3 NA. VDP NA with Faribault altimeter setting. When local altimeter setting not received, use Faribault altimeter setting and increase all DA 41 feet and all MDA 60 feet. Increase LPV all Cats visibility to 1 1/4 mile and LNAV Cat C/D visibility to 1 3/8 mile. Increase Circling Cat C visibility to 1 3/4 mile.

**⚠** MISSED APPROACH: Climb to 2900 direct DEWOR and hold.

AWOS-3 <b>128.325</b>	ROCHESTER APP CON * <b>119.8 251.125</b>	UNICOM <b>122.7 (CTAF)</b>
--------------------------	---	-------------------------------



CATEGORY	A	B	C	D
LPV DA		1441-1	314 (300-1)	
LNAV/VNAV DA		1400-7/8	273 (300-7/8)	
LNAV MDA	1520-1	393 (400-1)	1520-1 1/8	393 (400-1 1/8)
CIRCLING	1620-1	475 (500-1)	1700-1 1/2	1700-2 555 (600-2)

MIRL Rwy 5-23  
REIL Rwys 5, 12, and 23  
HIRL Rwy 12-30

NC-1, 23 MAY 2019 to 20 JUN 2019

NC-1, 23 MAY 2019 to 20 JUN 2019