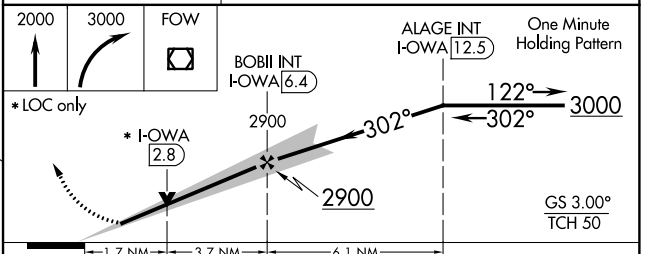
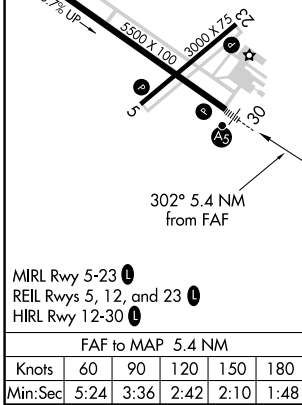
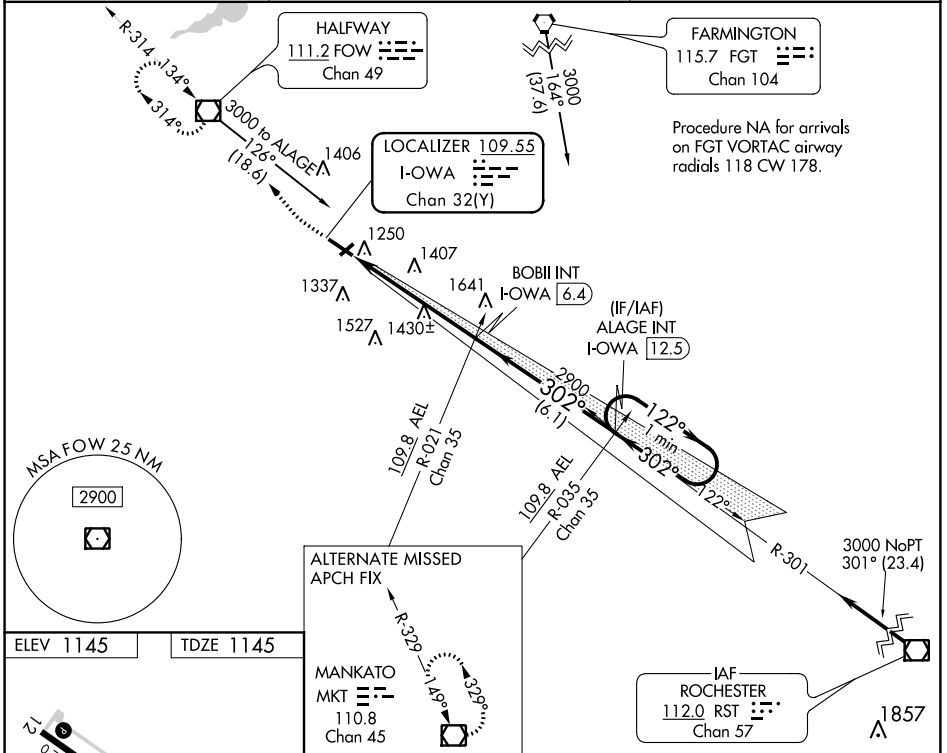


LOC/DME I-OWA 109.55 Chan 32(Y)	APP CRS 302°	Rwy Idg 5500 TDZE 1145 Apt Elev 1145
--	------------------------	---

ILS or LOC RWY 30

OWATONNA DEGNER RGNL (OWA)

<p>▼ When local altimeter setting not received, use Faribault altimeter setting and increase all DA 41 feet and all MDA 60 feet.</p> <p>▲ NA Increase S-LOC 30 Cats C/D visibility to 1½ mile and Circling Cat C visibility to 1½ and Cat D Circling visibility to 2½.</p>	<p>MALSR</p>	<p>MISSED APPROACH Climb to 2000 then climbing right turn to 3000 direct FOW VOR/DME and hold.</p>
<p>AWOS-3 128.325</p>	<p>ROCHESTER APP CON * 119.8 251.125</p>	<p>UNICOM 122.7 (CTAF) ①</p>



MIRL Rwy 5-23 ①
REIL Rwy 5, 12, and 23 ①
HIRL Rwy 12-30 ①

FAF to MAP 5.4 NM

Knots	60	90	120	150	180
Min:Sec	5:24	3:36	2:42	2:10	1:48

CATEGORY	A	B	C	D
S-ILS 30	1345-½		200 (200-½)	
S-LOC 30	1740-½	595 (600-½)	1740-¼	595 (600-¼)
☑ CIRCLING	1740-1	595 (600-1)	1740-¾ 595 (600-¾)	1880-2¼ 735 (800-2¼)

NC-1, 23 MAY 2019 to 20 JUN 2019

NC-1, 23 MAY 2019 to 20 JUN 2019