

VOR/DME AEL	APP CRS	Rwy Idg	<b>5000</b>
<b>109.8</b>	<b>342°</b>	TDZE	<b>1261</b>
Chan <b>35</b>		Apt Elev	<b>1261</b>

# VOR RWY 35

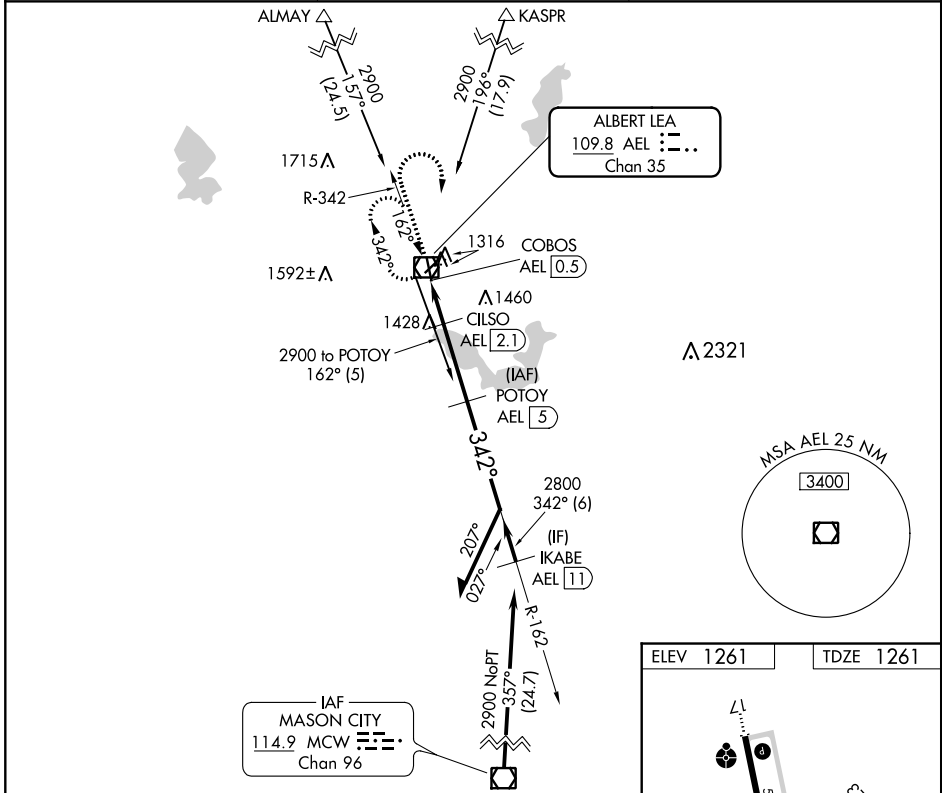
ALBERT LEA MUNI (AEL)

DME required.

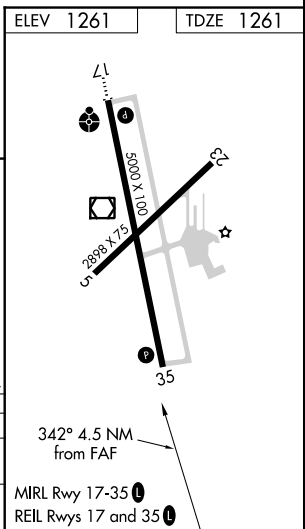
▼ Circling Rwy 5, 23 NA at night.  
Rwy 35 helicopter visibility reduction below 3/4 SM NA.

MISSED APPROACH: Climb to 2500 then climbing right turn to 2900 direct AEL VOR/DME and hold.

AWOS-3 <b>109.8</b>	ROCHESTER APP CON ★ <b>119.8 251.125</b>	UNICOM <b>123.0 (CTAF) 0</b>
------------------------	---------------------------------------------	---------------------------------



2500	2900	AEL	POTOY AEL 5	Remain within 10 NM
↑	↷	☐		
CILSO AEL 2.1				
COBOS AEL 0.5		≤ 3.31° TCH 50	1880	2800
1.6 NM		2.9 NM		VGSI and descent angles not coincident (VGSI Angle 3.00/TCH 30).
CATEGORY	A	B	C	D
S-35	1740-1	479 (500-1)	1740-1 3/8	479 (500-1 3/8)
CIRCLING	1780-1	519 (600-1)	1780-1 1/2	1820-2
			519 (600-1 1/2)	559 (600-2)



NC-1, 23 MAY 2019 to 20 JUN 2019

NC-1, 23 MAY 2019 to 20 JUN 2019