

VOR/DME AEL 109.8 Chan 35	APP CRS 173°	Rwy Idg TDZE 1260 Apt Elev 1261	5000
---	------------------------	---	-------------

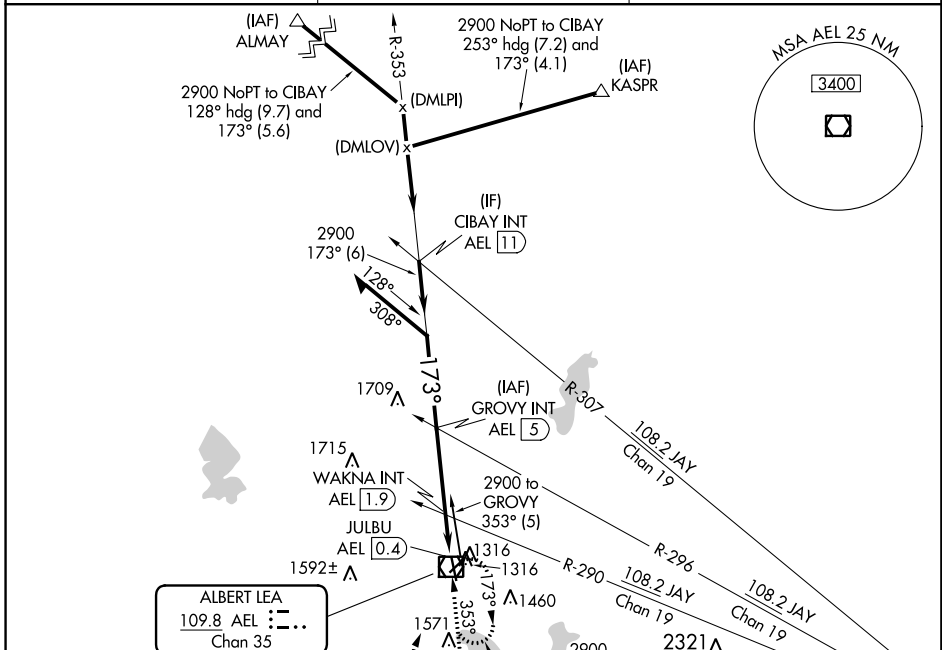
VOR RWY 17

ALBERT LEA MUNI (AEL)

⚠ Circling to Rwy 5/23 NA at night. Visibility reduction by helicopters NA. When local altimeter setting not received, use Austin altimeter setting and increase all MDA 60 feet; increase S-17 Cat C/D visibility 1/4 mile, and WAKNA fix minimums S-17 Cat C/D visibility 1/8 mile.

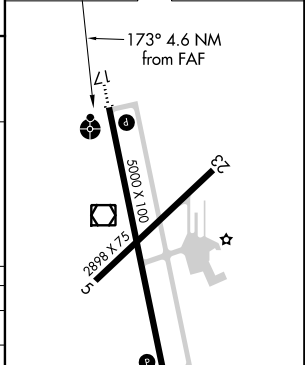
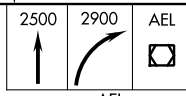
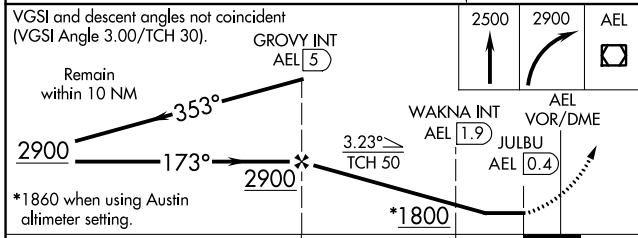
ODALS MISSED APPROACH: Climb to 2500 then climbing right turn to 2900 direct AEL VOR/DME and hold.

AWOS-3 109.8	ROCHESTER APP CON ★ 119.8 251.125	UNICOM 123.0 (CTAF) 0
------------------------	---	---------------------------------



ALBERT LEA
109.8 AEL ...
Chan 35

ELEV 1261	TDZE 1260
-----------	-----------



CATEGORY	A	B	C	D
S-17	1800-1	540 (600-1)	1800-1½	540 (600-1½)
CIRCLING	1800-1	539 (600-1)	1800-1½	1820-2 539 (600-1½)
WAKNA FIX MINIMUMS (DUAL VOR RECEIVERS OR DME REQUIRED)				
S-17	1740-1	480 (500-1)	1740-1¾	480 (500-1¾)
CIRCLING	1780-1	519 (600-1)	1780-1½	1820-2 559 (600-2)

FAF to MAP 4.6 NM					
Knots	60	90	120	150	180
Min:Sec	4:36	3:04	2:18	1:50	1:32

NC-1, 23 MAY 2019 to 20 JUN 2019

NC-1, 23 MAY 2019 to 20 JUN 2019