

WAAS CH <b>53625</b> <b>W35A</b>	APP CRS <b>347°</b>	Rwy Idg TDZE Apt Elev	<b>5000</b> <b>1261</b> <b>1261</b>
--	------------------------	-----------------------------	---

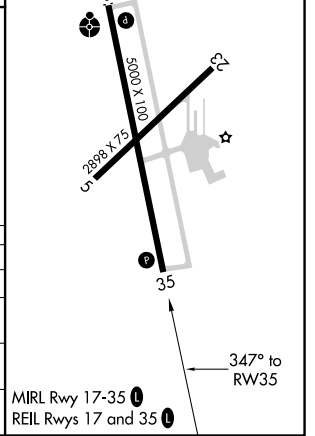
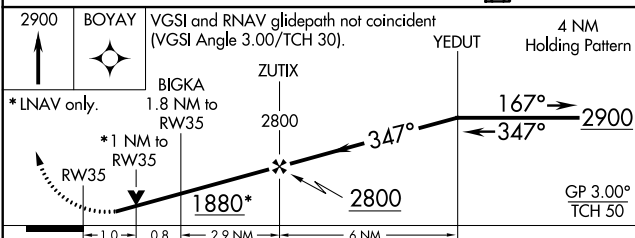
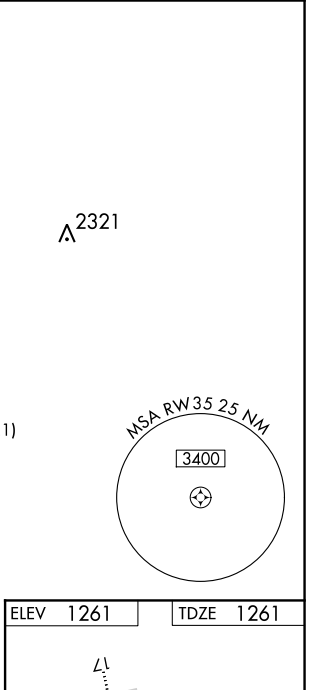
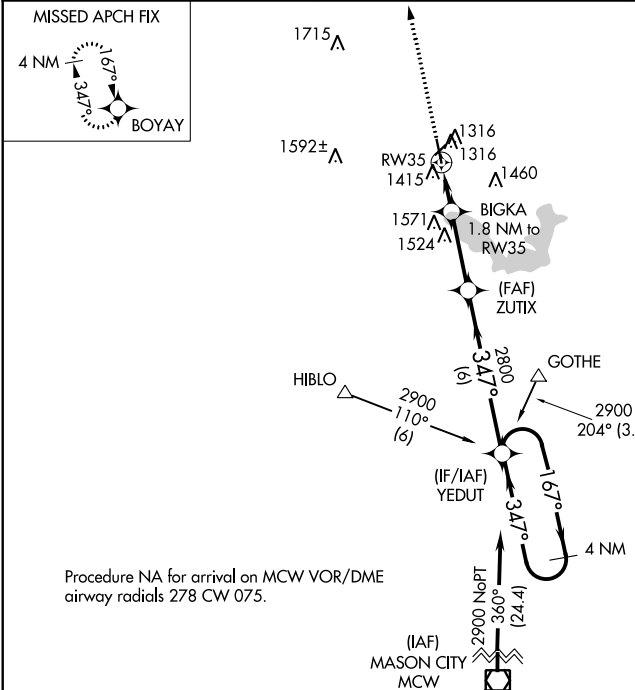
# RNAV (GPS) RWY 35

ALBERT LEA MUNI (A.E.L.)

**▼** Circling to Rwy 5/23 NA at night. Baro-VNAV NA when using Austin altimeter setting.  
**▲** For uncompensated Baro-VNAV systems, LNAV/VNAV NA below -28°C (-18°F) or above 36°C (96°F). DME/DME RNP-0.3 NA. VDP NA with Austin altimeter setting. Visibility reduction by helicopters NA. When local altimeter setting not received, use Austin altimeter setting and increase all DA 48 feet and all MDA 60 feet; increase LPV and LNAV/VNAV visibility ¼ mile all cats.

MISSED APPROACH:  
Climb to 2900 direct BOYAY and hold.

AWOS-3 <b>109.8</b>	ROCHESTER APP CON* <b>119.8 251.125</b>	UNICOM <b>123.0 (CTAF) 0</b>
------------------------	--	---------------------------------



CATEGORY	A	B	C	D
LPV DA		1511-3/4	250 (300-3/4)	
LNAV/VNAV DA		1576-1	315 (400-1)	
LNAV MDA	1720-1	459 (500-1)	1720-1 3/8	459 (500-1 3/8)
CIRCLING	1780-1	519 (600-1)	1780-1 1/2	1820-2 559 (600-2)

NC-1, 23 MAY 2019 to 20 JUN 2019

NC-1, 23 MAY 2019 to 20 JUN 2019