

WAAS CH 49204 W17A	APP CRS 167°	Rwy Idg TDZE Apt Elev	5000 1260 1261
--	------------------------	-----------------------------	---

RNAV (GPS) RWY 17

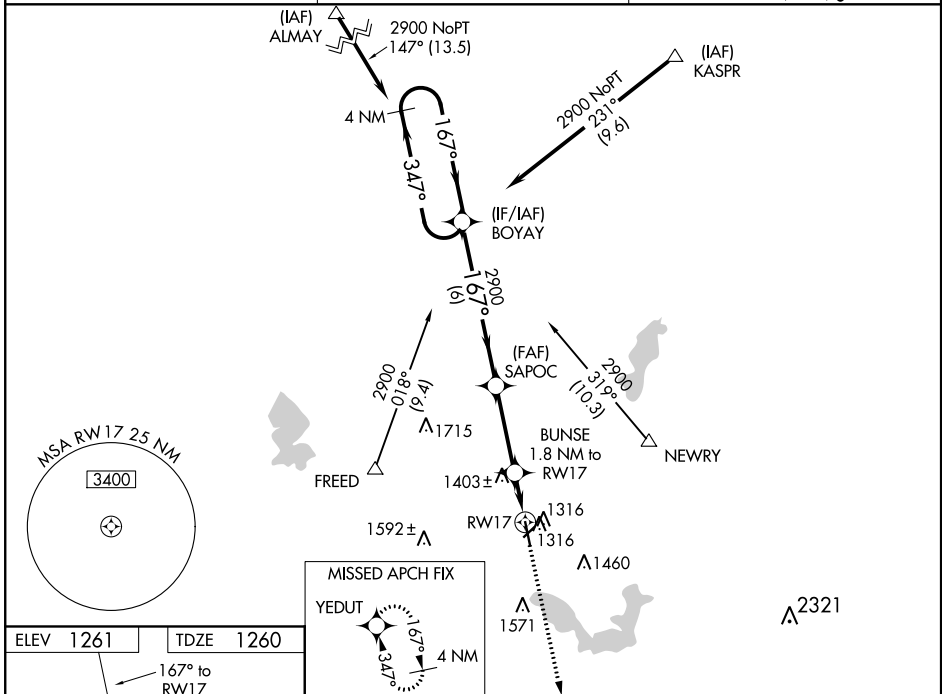
ALBERT LEA MUNI (AEL)

⚠ Circling to Rwy 5/23 NA at night. Baro-VNAV NA when using Austin altimeter setting. For uncompensated Baro-VNAV systems, LNAV/VNAV NA below -28°C (18°F) or above 36°C (96°F). DME/DME RNP-0.3 NA. Visibility reduction for helicopters NA. VDP NA with Austin altimeter setting. When local altimeter setting not received, use Austin altimeter setting and increase all DA 48 feet and all MDA 60 feet; increase LPV and LNAV/VNAV visibility ¼ mile all Cats, and LNAV Cat C/D visibility ⅓ mile.

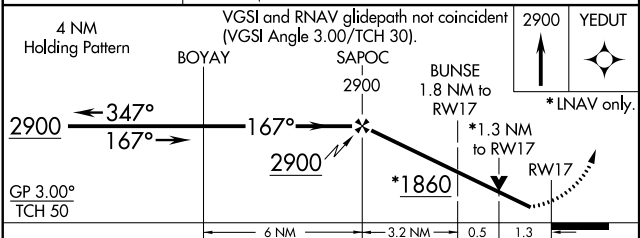
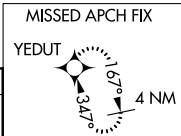
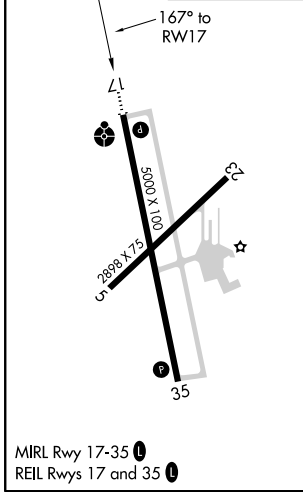


MISSED APPROACH:
Climb to 2900 direct YEDUT and hold.

AWOS-3 109.8	ROCHESTER APP CON* 119.8 251.125	UNICOM 123.0 (CTAF) 0
------------------------	--	---------------------------------



ELEV 1261	TDZE 1260
-----------	-----------



CATEGORY	A	B	C	D
LPV DA	1510-¾ 250 (300-¾)			
LNAV/VNAV DA	1510-¾ 250 (300-¾)			
LNAV MDA	1700-1	440 (500-1)	1700-1¼	440 (500-1¼)
CIRCLING	1780-1	519 (600-1)	1780-1½ 519 (600-1½)	1820-2 559 (600-2)

NC-1, 23 MAY 2019 to 20 JUN 2019

NC-1, 23 MAY 2019 to 20 JUN 2019