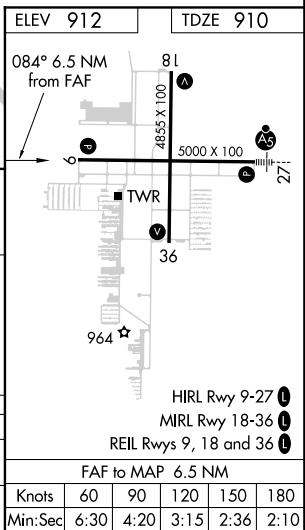
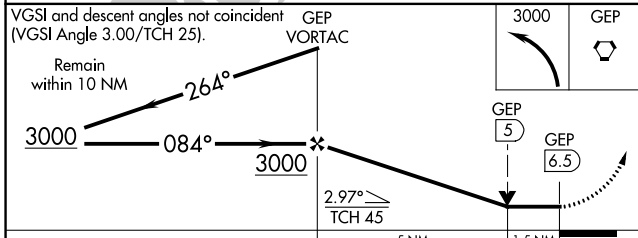
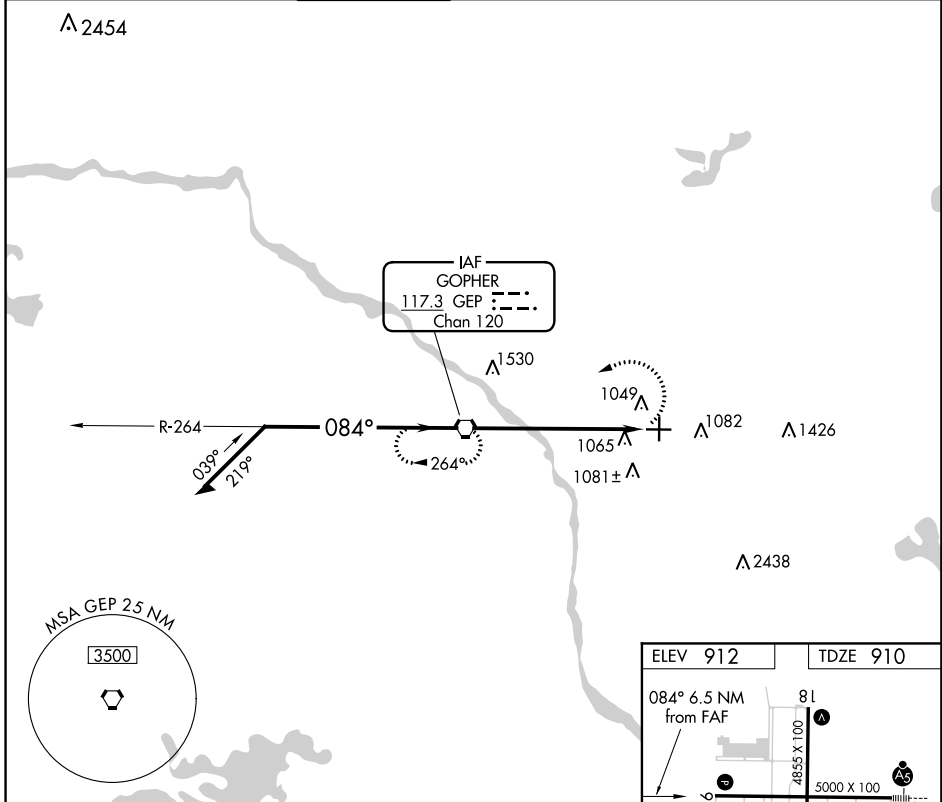


VORTAC GEP 117.3 Chan 120	APP CRS 084°	Rwy Idg TDZE Apt Elev	5000 910 912
--	------------------------	-----------------------------	---

VOR RWY 9
ANOKA COUNTY-BLAINE (JANES FIELD) (A.N.E)

MISSED APPROACH: Climbing left turn to 3000 direct GEP VORTAC and hold.

ATIS 120.625	MINNEAPOLIS APP CON 126.5 335.65	ANOKA TOWER* 132.4 (CTAF) 0	GND CON 121.85	CLNC DEL 121.3	MINNEAPOLIS CLNC DEL 121.85 (When tower closed)	UNICOM 122.95
------------------------	--	--	--------------------------	--------------------------	--	-------------------------



CATEGORY	A	B	C	D
S-9	1400-1 490 (500-1)		1400-1 $\frac{3}{8}$ 490 (500-1 $\frac{3}{8}$)	1400-1 $\frac{1}{2}$ 490 (500-1 $\frac{1}{2}$)
C CIRCLING	1400-1 488 (500-1)		1460-1 $\frac{1}{2}$ 548 (600-1 $\frac{1}{2}$)	1580-2 668 (700-2)

FAF to MAP 6.5 NM					
Knots	60	90	120	150	180
Min:Sec	6:30	4:20	3:15	2:36	2:10

NC-1, 23 MAY 2019 to 20 JUN 2019

NC-1, 23 MAY 2019 to 20 JUN 2019