

WAAS CH <b>82312</b> <b>W09A</b>	APP CRS <b>089°</b>	Rwy Idg TDZE Apt Elev	<b>5000</b> <b>910</b> <b>912</b>
--	------------------------	-----------------------------	---

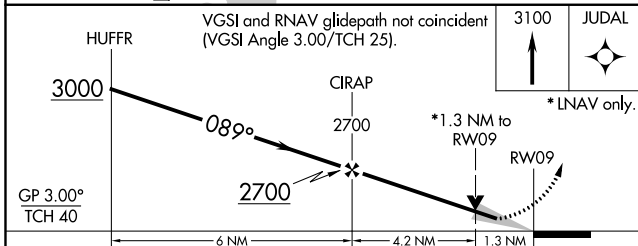
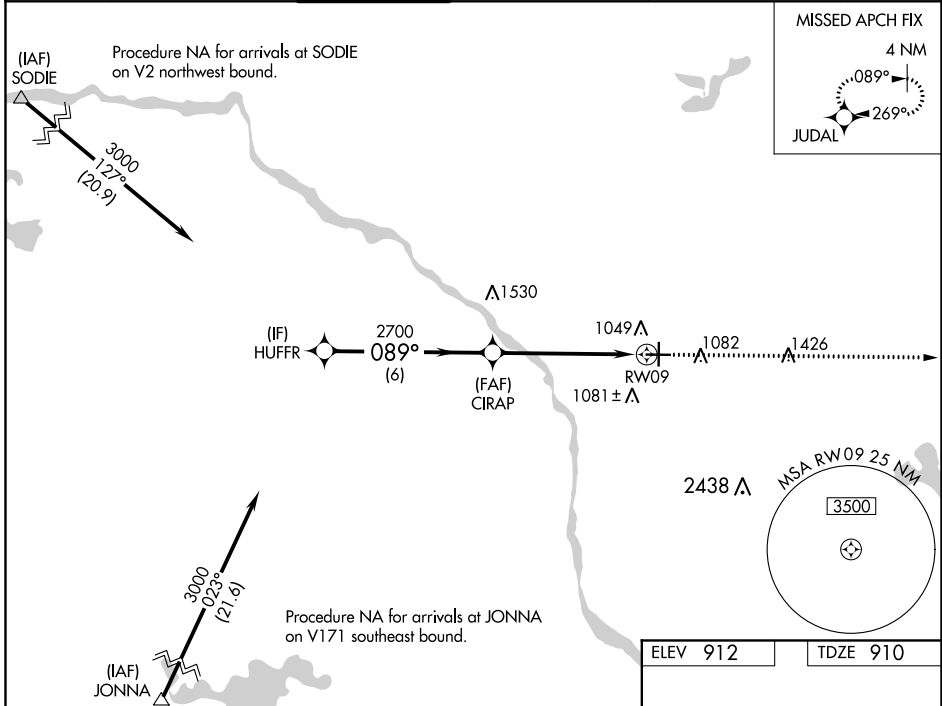
# RNAV (GPS) RWY 9

ANOKA COUNTY-BLAINE (JANES FIELD) (A.N.E.)

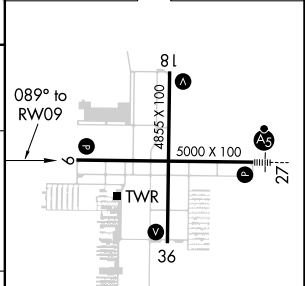
**▽** For uncompensated Baro-VNAV systems, LNAV/VNAV NA below -16°C (4°F) or above 54°C (130°F).  
DME/DME RNP-0.3 NA.

MISSED APPROACH: Climb to 3100 direct JUDAL and hold.

ATIS <b>120.625</b>	MINNEAPOLIS APP CON <b>126.5 335.65</b>	ANOKA TOWER* <b>132.4</b> (CTAF) <b>0</b>	GND CON <b>121.85</b>	CLNC DEL <b>121.3</b>	MINNEAPOLIS CLNC DEL <b>121.85</b> (When tower closed)	UNICOM <b>122.95</b>
------------------------	--	--	--------------------------	--------------------------	--	-------------------------



ELEV 912	TDZE 910
----------	----------



CATEGORY	A	B	C	D
LPV DA	1225-1		315 (400-1)	
LNAV/VNAV DA	1352-1 $\frac{3}{8}$		442 (500-1 $\frac{3}{8}$ )	
LNAV MDA	1340-1 430 (500-1)		1340-1 $\frac{1}{4}$ 430 (500-1 $\frac{1}{4}$ )	
<b>C</b> CIRCLING	1400-1 488 (500-1)		1460-1 $\frac{1}{2}$ 548 (600-1 $\frac{1}{2}$ ) 1580-2 668 (700-2)	

HIRL Rwy 9-27 **1**  
MIRL Rwy 18-36 **1**  
REIL Rwy 9, 18 and 36 **1**

NC-1, 23 MAY 2019 to 20 JUN 2019

NC-1, 23 MAY 2019 to 20 JUN 2019