

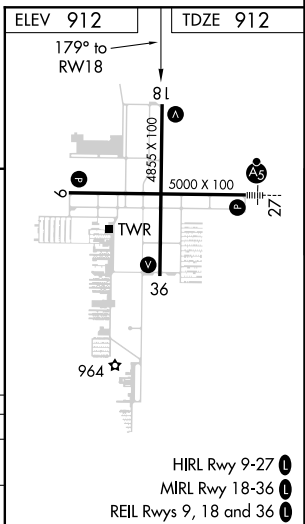
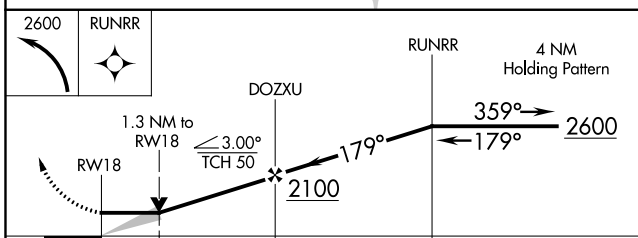
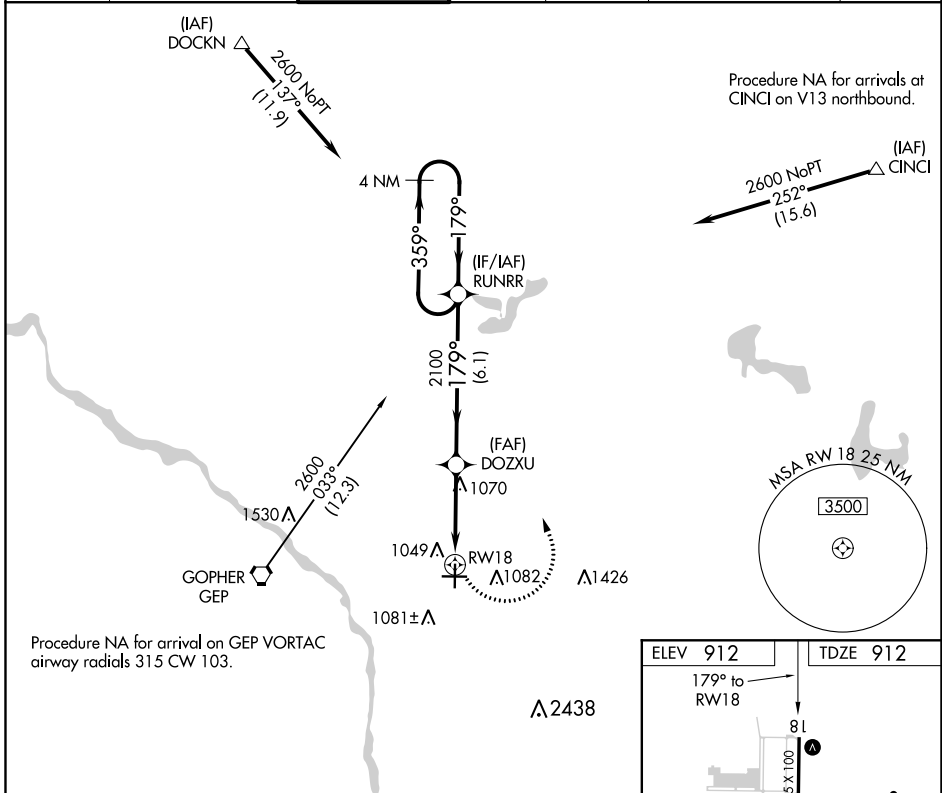
APP CRS	Rwy Idg	4855
179°	TDZE	912
	Apt Elev	912

RNAV (GPS) RWY 18

ANOKA COUNTY-BLAINE (JANES FIELD) (A.N.E.)

DME/DME RNP-0.3 NA.			MISSED APPROACH: Climbing left turn to 2600 direct RUNRR and hold.			
---------------------	--	--	--	--	--	--

ATIS	MINNEAPOLIS APP CON	ANOKA TOWER*	GND CON	CLNC DEL	MINNEAPOLIS CLNC DEL	UNICOM
120.625	126.5 335.65	132.4 (CTAF) 0	121.85	121.3	121.85 (When tower closed)	122.95



CATEGORY	A	B	C	D
LNVA MDA	1380-1	468 (500-1)	1380-1 ³ / ₈ 468 (500-1 ³ / ₈)	1380-1 ¹ / ₂ 468 (500-1 ¹ / ₂)
C CIRCLING	1400-1	488 (500-1)	1460-1 ¹ / ₂ 548 (600-1 ¹ / ₂)	1580-2 668 (700-2)

- HIRL Rwy 9-27 0
- MIRL Rwy 18-36 0
- REIL Rws 9, 18 and 36 0

NC-1, 23 MAY 2019 to 20 JUN 2019

NC-1, 23 MAY 2019 to 20 JUN 2019