

LOC/DME I-ANE 111.15 Chan 48 (Y)	APP CRS 269°	Rwy Idg TDZE Apt Elev	5000 910 912
---	------------------------	-----------------------------	---

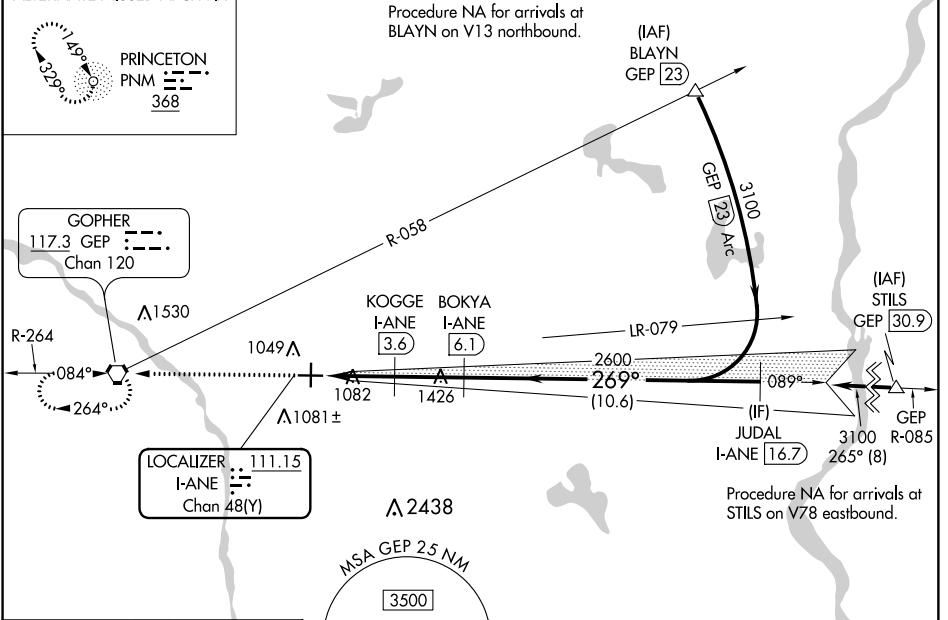
ILS or LOC RWY 27
ANOKA COUNTY-BLAINE (JANES FIELD) (A.N.E.)

DME required.		MALSR 	MISSED APPROACH: Climb to 2700 direct GEP VORTAC and hold.			
ATIS 120.625	MINNEAPOLIS APP CON 126.5 335.65	ANOKA TOWER* 132.4 (CTAF) 0	GND CON 121.85	CLNC DEL 121.3	MINNEAPOLIS CLNC DEL 121.85 (When tower closed)	UNICOM 122.95

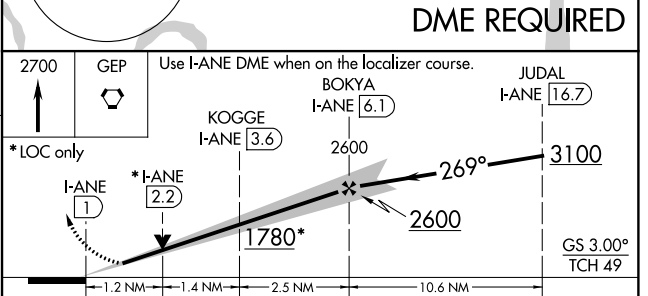
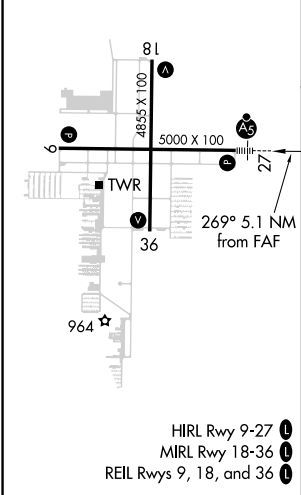
ALTERNATE MISSED APCH FX

PRINCETON PNM 368

GOPHER 117.3 GEP 120 Chan 120



ELEV 912	TDZE 910
----------	----------



CATEGORY	A	B	C	D
S-ILS 27	1110-½ 200 (200-½)			
S-LOC 27	1340-½ 430 (500-½)	1340-¾ 430 (500-¾)	1460-1½ 548 (600-1½)	1340-1 430 (500-1)
CIRCLING	1400-1 488 (500-1)			1580-2 668 (700-2)

NC-1, 23 MAY 2019 to 20 JUN 2019

NC-1, 23 MAY 2019 to 20 JUN 2019