

# RNAV (GPS) RWY 14L

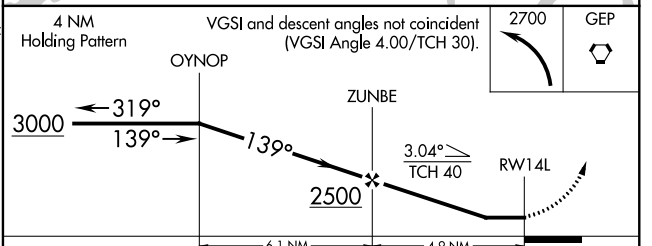
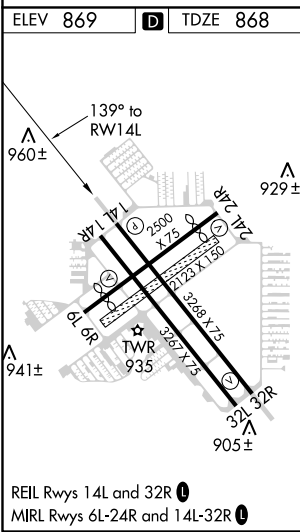
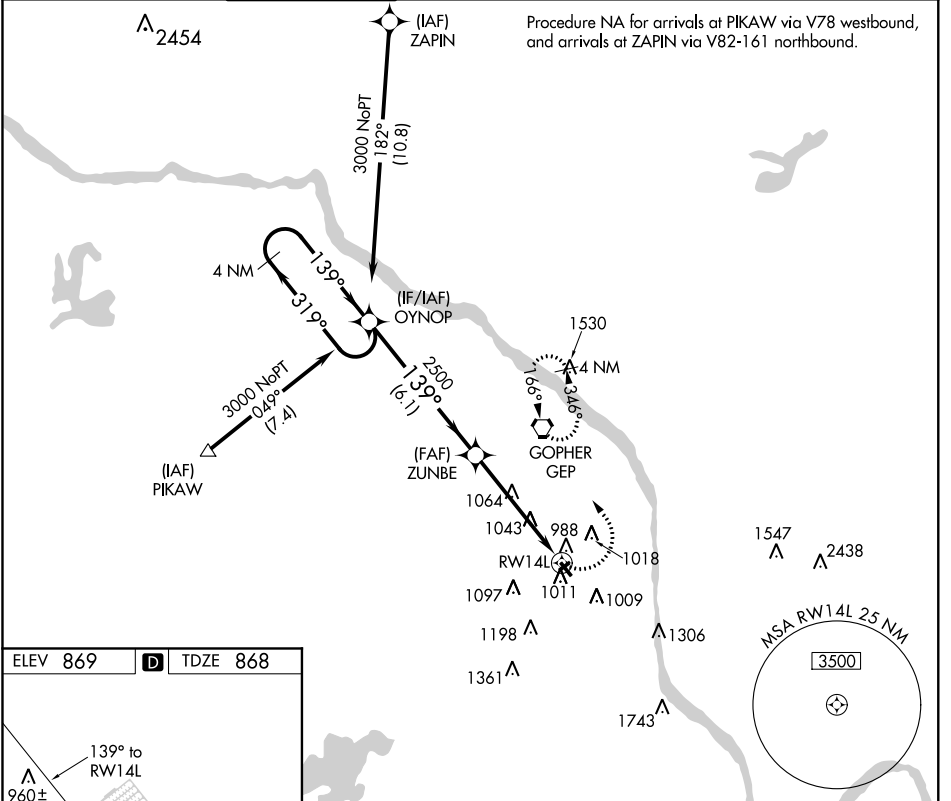
CRYSTAL (MIC)

APP CRS <b>139°</b>	Rwy Idg <b>3268</b>
	TDZE <b>868</b>
	Apt Elev <b>869</b>

**⚠** DME/DME RNP-0.3 NA. Visibility reduction by helicopters NA.  
**⚠** When local altimeter setting not received, use Anoka County-Blaine (Janes Field) altimeter setting and increase all MDA 80 feet, increase Circling Cat D visibility ¼ mile.

**MISSED APPROACH:** Climbing left turn to 2700 direct GEP VORTAC and hold.

ATIS <b>124.475</b>	MINNEAPOLIS APP CON <b>126.5 335.65</b>	CRYSTAL TOWER* <b>120.7 (CTAF) 0</b>	GND CON <b>121.6</b>	CLNC DEL <b>121.6</b>	MINNEAPOLIS CLNC DEL <b>121.6</b> (When tower closed)	UNICOM <b>122.95</b>
------------------------	--	---	-------------------------	--------------------------	---	-------------------------



CATEGORY	A	B	C	D
LNAV MDA	1380-1	512 (600-1)	1380-1½ 512 (600-1½)	1380-1¾ 512 (600-1¾)
CIRCLING	1380-1	511 (600-1)	1380-1½ 511 (600-1½)	1460-2 591 (600-2)

NC-1, 23 MAY 2019 to 20 JUN 2019

NC-1, 23 MAY 2019 to 20 JUN 2019