

WAAS CH <b>82635</b> <b>W36A</b>	APP CRS <b>003°</b>	Rwy Idg <b>2690</b> TDZE <b>905</b> Apt Elev <b>906</b>
--	------------------------	---

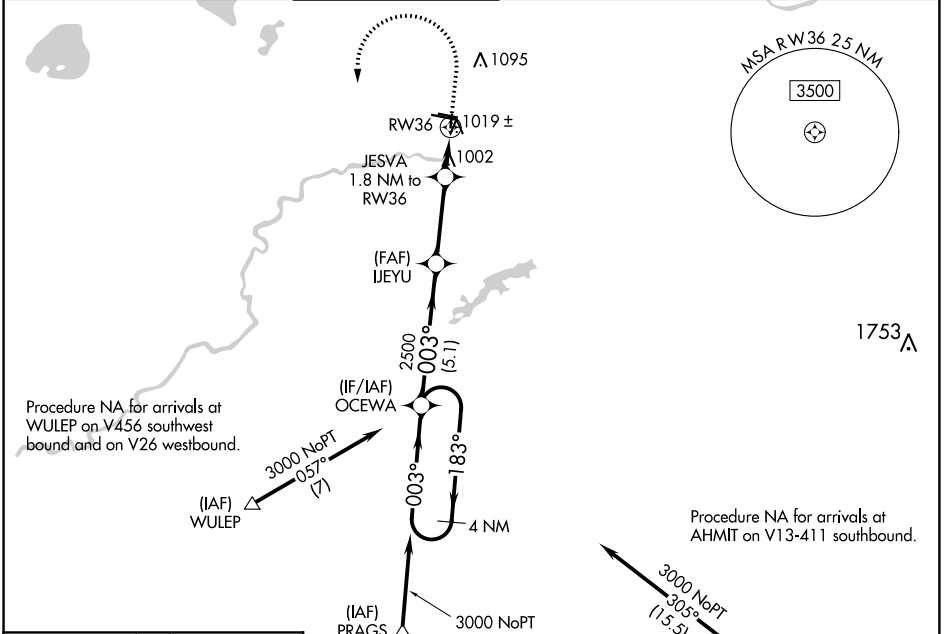
# RNAV (GPS) RWY 36

FLYING CLOUD (FCM)

**⚠** DME/DME RNP-0.3 NA. Helicopter visibility reduction below 1 SM NA.  
**⚠** Night Landing: Rwy 18/36 NA. When local altimeter setting not received, use Minneapolis St Paul Intl/Wold-Chamberlain altimeter setting and increase all MDA 40 feet and increase LP and LNAV Cat C visibility 1/8 mile.

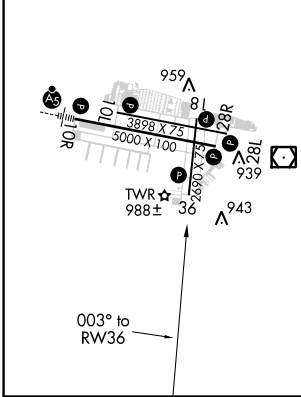
**MISSED APPROACH:** Climb to 2000 then climbing left turn to 3000 direct OCEWA and hold.

ATIS <b>124.9</b>	MINNEAPOLIS APP CON <b>134.7 284.7</b>	FLYING CLOUD TOWER ★ <b>119.15 (CTAF) 0</b>	GND CON <b>121.7</b>	MINNEAPOLIS CLNC DEL <b>121.7</b> (When tower closed)	UNICOM <b>122.95</b>
----------------------	---	--	-------------------------	---	-------------------------

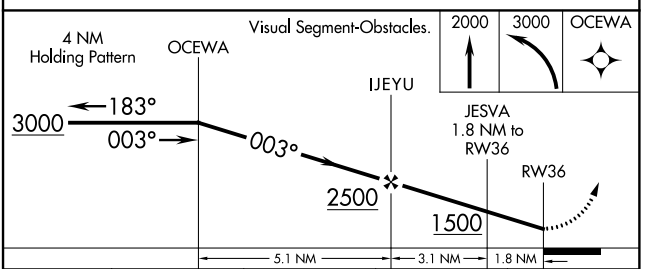


ELEV 906	TDZE 905
----------	----------

HIRL Rwy 10R-28L  
 REIL Rwy 10L, 28R  
 REIL Rwy 18, 28L, and 36  
 MIRL Rwy 10L-28R and 18-36



Procedure NA for arrivals at PRAGS on V505 southbound.



CATEGORY	A	B	C	D
LP MDA		1260-1	355 (400-1)	NA
LNAV MDA		1280-1	375 (400-1)	NA
<b>C</b> CIRCLING	1320-1 414 (500-1)	1440-1 534 (600-1)	1440-1½ 534 (600-1½)	NA

NC-1, 23 MAY 2019 to 20 JUN 2019

NC-1, 23 MAY 2019 to 20 JUN 2019