

WAAS CH <b>42510</b> <b>W10A</b>	APP CRS <b>098°</b>	Rwy Idg <b>3898</b> TDZE <b>906</b> Apt Elev <b>906</b>
--	------------------------	---

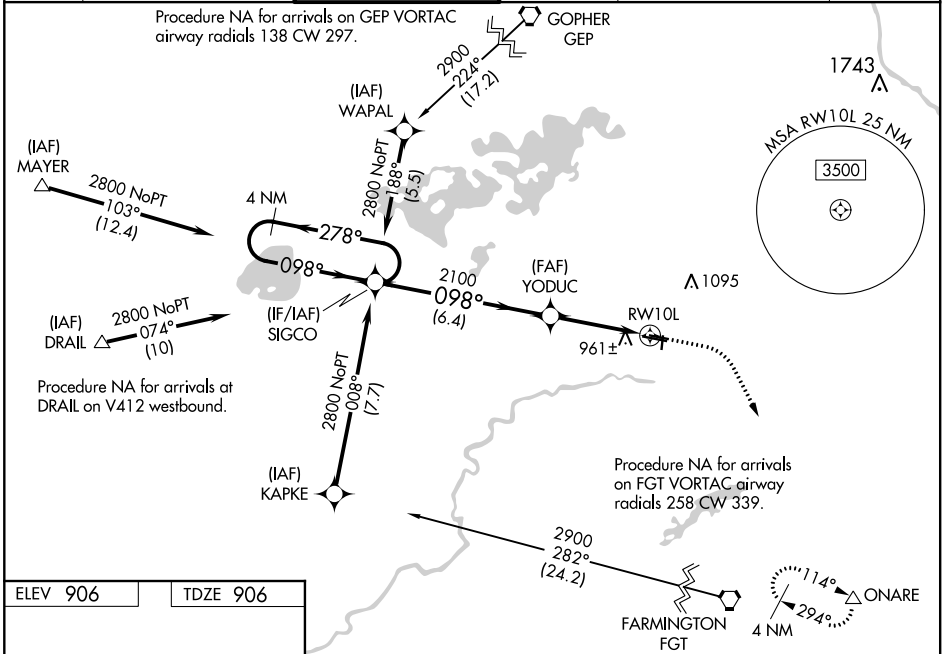
# RNAV (GPS) RWY 10L

FLYING CLOUD (FCM)

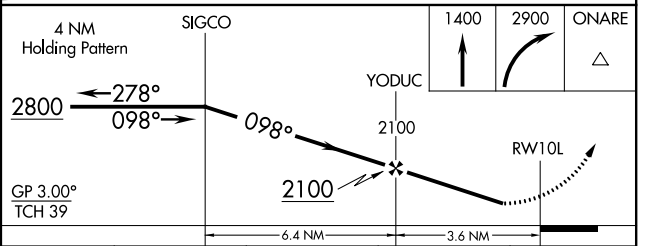
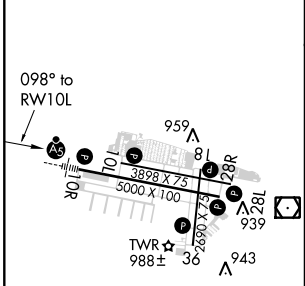
**⚠** Baro-VNAV NA when using Minneapolis-St Paul Intl/Wold Chamberlain altimeter setting. For uncompensated Baro-VNAV systems, LNAV-VNAV NA below -22°C (-7°F) or above 54°C (130°F). DME/DME RNP-0.3 NA. Night Landing: Rwy 18/36 NA. When local altimeter setting not received, use Minneapolis-St Paul Intl/Wold Chamberlain altimeter setting and increase all DA 34 feet and all MDA 40 feet; increase LNAV/VNAV visibility ½ mile all Cats, and Circling Cat D ¼ mile.

**⚠** MISSED APPROACH: Climb to 1400 then climbing right turn to 2900 direct ONARE and hold.

ATIS <b>124.9</b>	MINNEAPOLIS APP CON <b>134.7 284.7</b>	FLYING CLOUD TOWER ★ <b>119.15 (CTAF) 0</b>	GND CON <b>121.7</b>	MINNEAPOLIS CLNC DEL <b>121.7</b> (When tower closed)	UNICOM <b>122.95</b>
----------------------	---	--	-------------------------	---	-------------------------



ELEV 906	TDZE 906
----------	----------



CATEGORY	A	B	C	D
LPV DA		1187-1	281 (300-1)	
LNAV/VNAV DA		1230-1 ½	324 (400-1 ½)	
LNAV MDA		1240-1	334 (400-1)	
<b>C</b> CIRCLING	1320-1 414 (500-1)	1440-1 534 (600-1)	1440-1 ½ 534 (600-1 ½)	1540-2 634 (700-2)

NC-1, 23 MAY 2019 to 20 JUN 2019

NC-1, 23 MAY 2019 to 20 JUN 2019