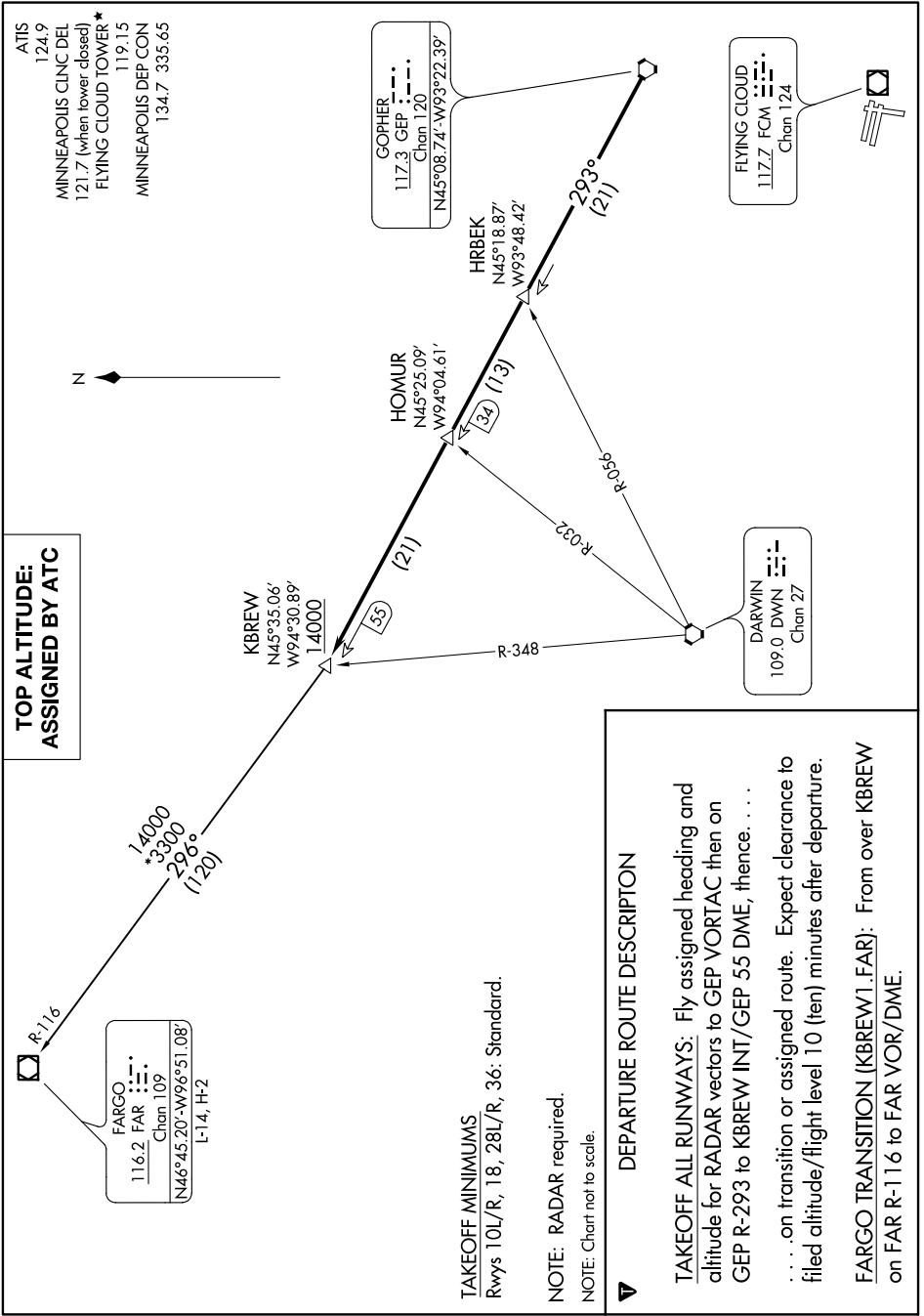


KBREW ONE DEPARTURE
(KBREW1.KBREW) 18032

AL-5094 (FAA)

FLYING CLOUD (FCM)
MINNEAPOLIS, MINNESOTA

NC-1, 23 MAY 2019 to 20 JUN 2019



KBREW ONE DEPARTURE
(KBREW1.KBREW) 01FEB18

MINNEAPOLIS, MINNESOTA
FLYING CLOUD (FCM)

NC-1, 23 MAY 2019 to 20 JUN 2019

**TOP ALTITUDE:
ASSIGNED BY ATC**

FARGO FAR
116.2 FAR
Chan 109
N46°45.20'-W96°51.08'
L-14, H-2

TAKEOFF MINIMUMS
Rwys 10L/R, 18, 28L/R, 36: Standard.

NOTE: RADAR required.
NOTE: Chart not to scale.

DEPARTURE ROUTE DESCRIPTION

TAKEOFF ALL RUNWAYS: Fly assigned heading and altitude for RADAR vectors to GEP VORTAC then on GEP R-293 to KBREW INT/GEP 55 DME, thence on transition or assigned route. Expect clearance to filed altitude/flight level 10 (ten) minutes after departure.

FARGO TRANSITION (KBREW1.FAR): From over KBREW on FAR R-116 to FAR VOR/DME.

ATIS
124.9
MINNEAPOLIS CLNC DEL
121.7 (when tower closed)
FLYING CLOUD TOWER ★
119.15
MINNEAPOLIS DEP CON
134.7 335.65

GOPHER
117.3 GEP
Chan 120
N45°08.74'-W93°22.39'

FLYING CLOUD
117.7 FCM
Chan 124

DARWIN
109.0 DWN
Chan 27

HOMUR
N45°25.09'
W94°04.61'

HRBEK
N45°18.87'
W93°48.42'

KBREW
N45°35.06'
W94°30.89'
14000

