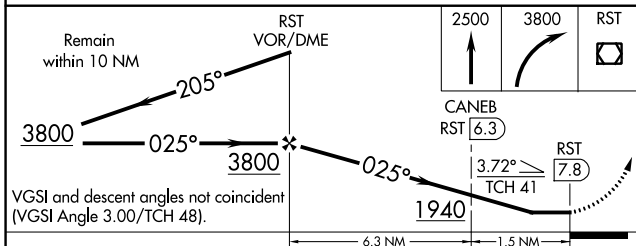
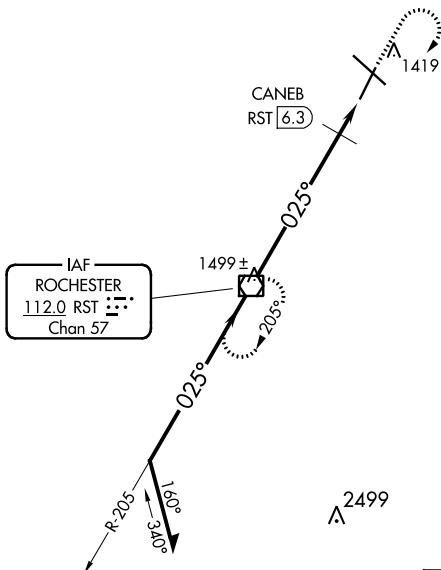


VOR/DME RST 112.0 Chan 57	APP CRS 025°	Rwy Idg 7300 TDZE 1317 Apt Elev 1317
---	------------------------	---

VOR RWY 2

ROCHESTER INTL (RST)

ASR		MISSED APPROACH: Climb to 2500 then climbing right turn to 3800 direct RST VOR/DME and hold.		
ATIS 120.5	ROCHESTER APP CON ★ 119.8 251.125	ROCHESTER TOWER ★ 118.3 (CTAF) 257.8	GND CON 121.9	UNICOM 122.95



CATEGORY	A	B	C	D
S-2	1940-1	623 (700-1)	1940-1¾ 623 (700-1¾)	1940-2 623 (700-2)
CIRCLING	1940-1	623 (700-1)	1940-1¾ 623 (700-1¾)	1940-2 623 (700-2)
DME MINIMUMS				
S-2	1680-1 363 (400-1)		NA	
CIRCLING	1720-1 403 (500-1)	1780-1 463 (500-1)	1780-1½ 463 (500-1½)	1880-2 563 (600-2)

