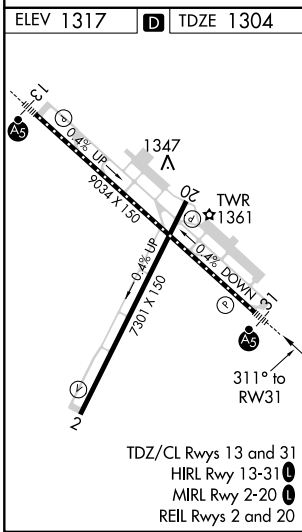
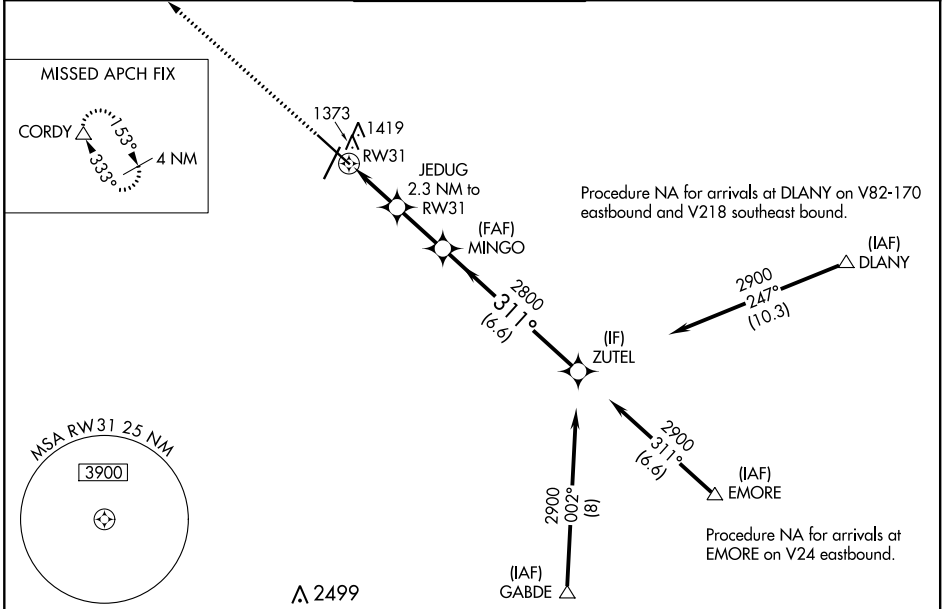


WAAS CH 49028 W31A	APP CRS 311°	Rwy Idg TDZE Apt Elev	9033 1304 1317
--	------------------------	-----------------------------	---

RNAV (GPS) RWY 31

ROCHESTER INTL (RST)

RNP APCH.		MALSR		MISSED APPROACH: Climb to 3000 direct CORDY and hold.	
<p>ASR For uncompensated Baro-VNAV systems, LNAV/VNAV NA below -20°C or above 54°C. For inop ALS, increase LNAV/VNAV all Cats visibility to RVR 4500, increase LNAV Cat C/D visibility to RVR 5500.</p>					
ATIS 120.5	ROCHESTER APP CON* 119.8 251.125	ROCHESTER TOWER* 118.3 (CTAF) 257.8	GND CON 121.9	UNICOM 122.95	



ELEV 1317 TDZE 1304

Procedure NA for arrivals at DLANY on V82-170 eastbound and V218 southeast bound.

Procedure NA for arrivals at EMORE on V24 eastbound.

Procedure NA for arrivals at GABDE on V398-411 southeast bound.

3000	CORDY	MINGO		ZUTEL
	△		2800	2900
*LNAV only.		JEDUG 2.3 NM to RW31		
		*1 NM to RW31		
		2100*	2800	2900
		1 NM	1.3 NM	2.2 NM
				6.6 NM
				GP 3.00° TCH 56
CATEGORY	A	B	C	D
LPV DA	1504/18		200 (200-½)	
LNAV/VNAV DA	1554/24		250 (300-½)	
LNAV MDA	1640/24	336 (400-½)	1640/35	336 (400-¾)
CIRCLING	1720-1 403 (500-1)	1780-1 463 (500-1)	1900-1½ 583 (600-1½)	1900-2 583 (600-2)

NC-1, 23 MAY 2019 to 20 JUN 2019

NC-1, 23 MAY 2019 to 20 JUN 2019