

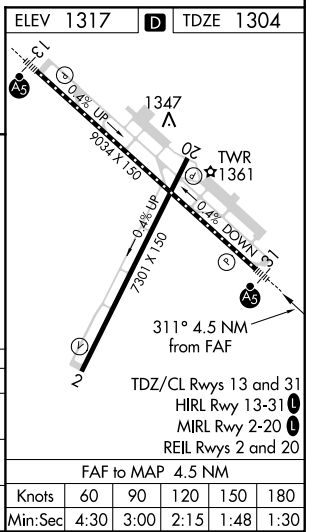
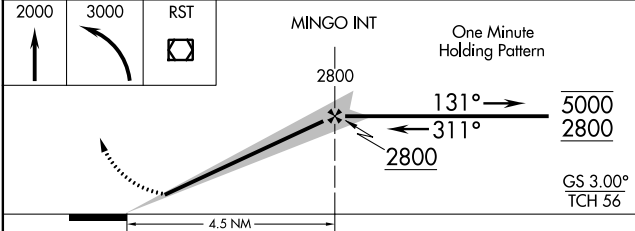
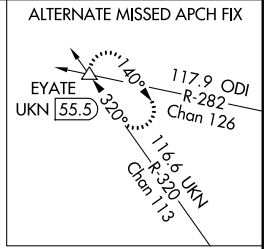
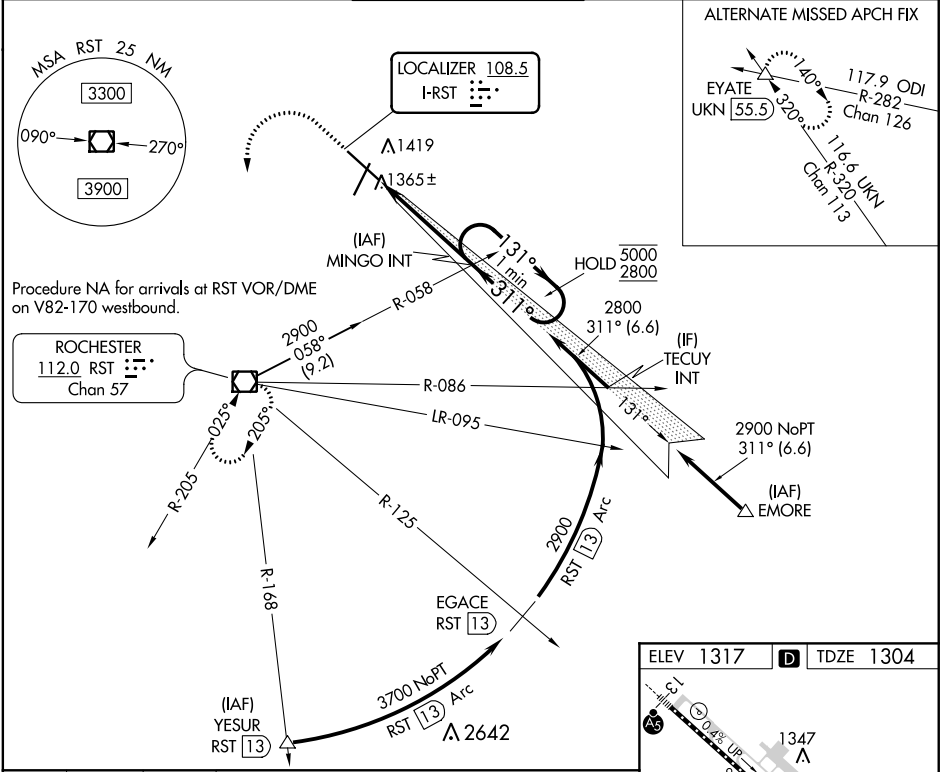
LOC I-RST <b>108.5</b>	APP CRS <b>311°</b>	Rwy Idg <b>9033</b>
		TDZE <b>1304</b>
		Apt Elev <b>1317</b>

# ILS Z or LOC Z RWY 31

ROCHESTER INTL (RST)

<p>For inop ALS, increase S-LOC 31 Cat C/D visibility to RVR 5500.</p>	<p>MALSR</p>	<p>MISSED APPROACH: Climb to 2000 then climbing left turn to 3000 direct RST VOR/DME and hold.</p>
--	--------------	--

ATIS <b>120.5</b>	ROCHESTER APP CON* <b>119.8 251.125</b>	ROCHESTER TOWER* <b>118.3 (CTAF) 257.8</b>	GND CON <b>121.9</b>	UNICOM <b>122.95</b>
----------------------	--	---	-------------------------	-------------------------



CATEGORY	A	B	C	D
S-ILS 31	1504/18		200 (200-½)	
S-LOC 31	1620/24		316 (400-½)	
CIRCLING	1720-1	1780-1	1900-1½	1900-2
	403 (500-1)	463 (500-1)	583 (600-½)	583 (600-2)

NC-1, 23 MAY 2019 to 20 JUN 2019

NC-1, 23 MAY 2019 to 20 JUN 2019