

ILS RWY 31 (SA CAT I & II)

ROCHESTER INTL (RST)

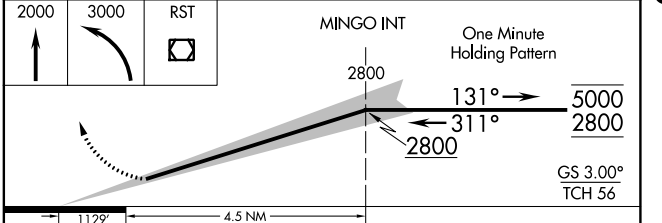
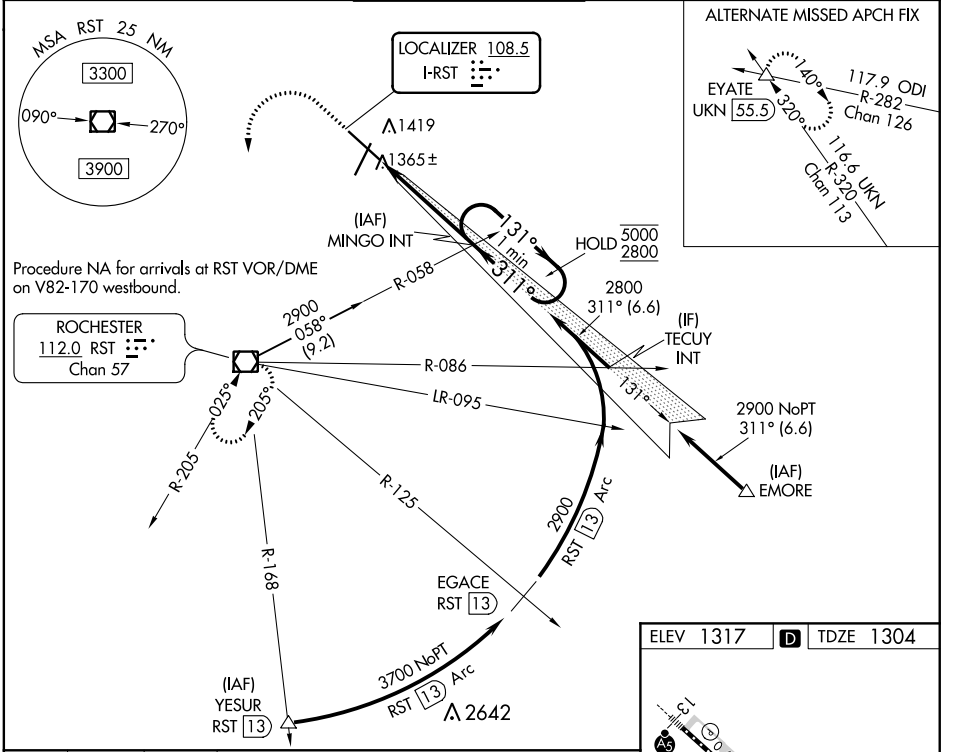
LOC I-RST 108.5	APP CRS 311°	Rwy Idg 9033	TDZE 1304
		Apt Elev 1317	

SA CAT I : Requires specific OPSPEC, MSPEC, or LOA approval and use of HUD to DH.
SA CAT II : Reduced Lighting: Requires specific OPSPEC, MSPEC, or LOA approval and use of autoland or HUD to touchdown.
 Procedure NA when tower closed.

MALSR

MISSED APPROACH: Climb to 2000 then climbing left turn to 3000 direct RST VOR/DME and hold.

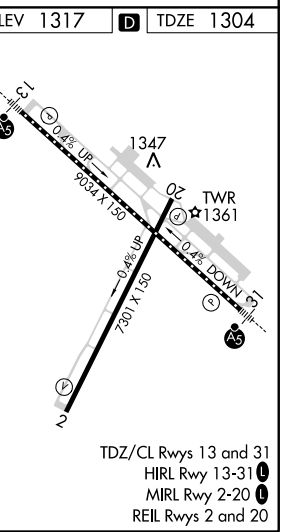
ATIS 120.5	ROCHESTER APP CON* 119.8 251.125	ROCHESTER TOWER* 118.3 (CTAF) 0 257.8	GND CON 121.9	UNICOM 122.95
----------------------	--	---	-------------------------	-------------------------



CATEGORY	A	B	C	D
S-ILS 31	SA CAT I	RA 204/14	150 DA 1454	
S-ILS 31	SA CAT II	RA 104/12	100 DA 1404	

SA CATEGORY I & II ILS - SPECIAL AIRCREW & AIRCRAFT CERTIFICATION REQUIRED

TDZ/CL Rwy 13 and 31
 HIRL Rwy 13-31
 MIRL Rwy 2-20
 REIL Rwy 2 and 20



NC-1, 23 MAY 2019 to 20 JUN 2019

NC-1, 23 MAY 2019 to 20 JUN 2019