

VORTAC LAL 116.0 Chan 107	APP CRS 096°	Rwy Idg 8414 TDZE 132 Apt Elev 142
---	------------------------	---

VOR RWY 9

LAKELAND LINDER INTL (LAL)

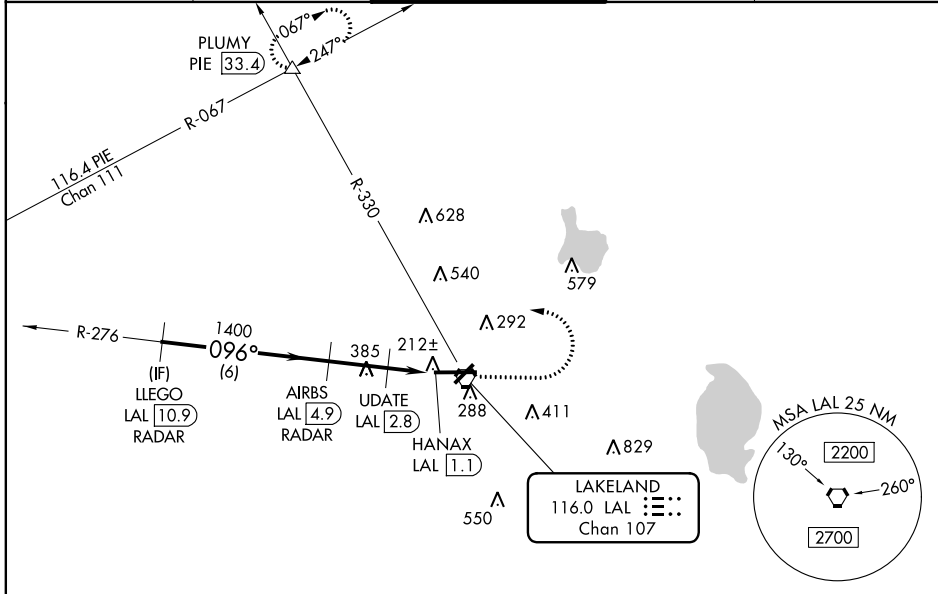
RADAR required for procedure entry. DME or RADAR required.

▼ When local altimeter setting not received, use Plant City altimeter setting and increase all MDA 20 feet; increase Circling Cat C visibility $\frac{1}{8}$ SM. VDP NA when using Plant City altimeter setting. For inop ALS, increase S-9 Cat C/D visibility to $1\frac{1}{8}$ SM; increase UDATE Fix Minimums S-9 Cat C/D visibility to $1\frac{3}{4}$ SM. For inop ALS when using Plant City altimeter setting, increase UDATE Fix Minimums S-9 Cat C/D visibility to $1\frac{1}{8}$ SM. Circling NA to Rwy 8 and 26.



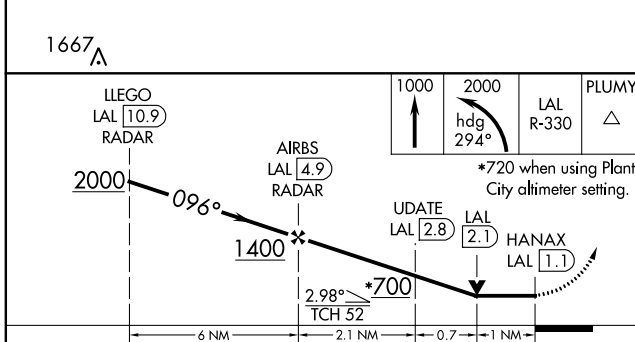
MISSED APPROACH: Climb to 1000 then climbing left turn to 2000 on heading 294° and on LAL VORTAC R-330 to PLUMY INT/PIE 33.4 DME and hold.

ATIS 118.025	TAMPA APP CON 120.65 290.3	LAKELAND TOWER ★ 124.5 (CTAF) 236.775	GND CON 121.4	UNICOM 122.95
------------------------	--------------------------------------	---	-------------------------	-------------------------



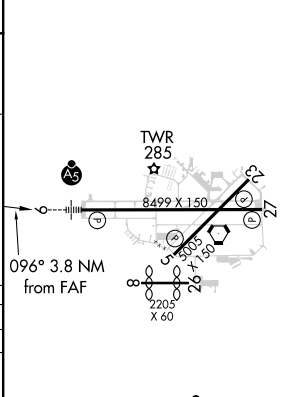
SE-3, 23 MAY 2019 to 20 JUN 2019

SE-3, 23 MAY 2019 to 20 JUN 2019



CATEGORY	A	B	C	D
S-9	700- $\frac{1}{2}$	568 (600- $\frac{1}{2}$)	700- $1\frac{1}{4}$	568 (600- $1\frac{1}{4}$)
CIRCLING	700-1	558 (600-1)	700- $1\frac{1}{2}$ 558 (600- $1\frac{1}{2}$)	700-2 558 (600-2)
UPDATE FIX MINIMUMS				
S-9	500- $\frac{1}{2}$	368 (400- $\frac{1}{2}$)	500- $\frac{3}{4}$	368 (400- $\frac{3}{4}$)
CIRCLING	600-1 458 (500-1)	660-1 518 (600-1)	660- $1\frac{1}{2}$ 518 (600- $1\frac{1}{2}$)	700-2 558 (600-2)

ELEV 142	D TDZE 132
----------	------------



HIRL Rwy 5-23 and 9-27	FAF to MAP 3.8 NM
Knots	60 90 120 150 180
Min:Seq	3:48 2:32 1:54 1:31 1:16