

VORTAC LAL <b>116.0</b> Chan <b>107</b>	APP CRS <b>256°</b>	Rwy Idg <b>8499</b> TDZE <b>142</b> Apt Elev <b>142</b>
-----------------------------------------------	------------------------	---------------------------------------------------------------

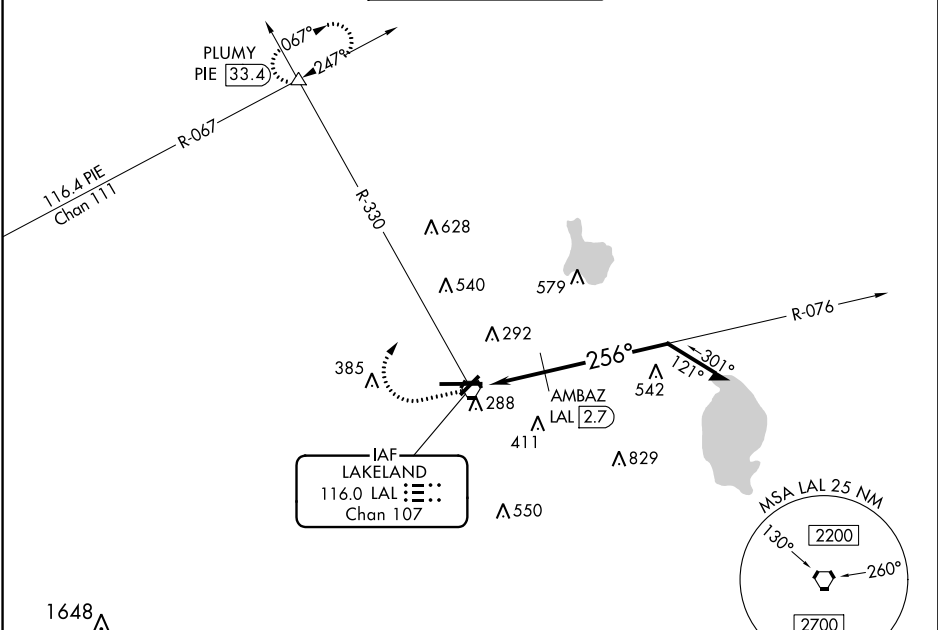
# VOR RWY 27

LAKELAND LINDER INTL (LAL)

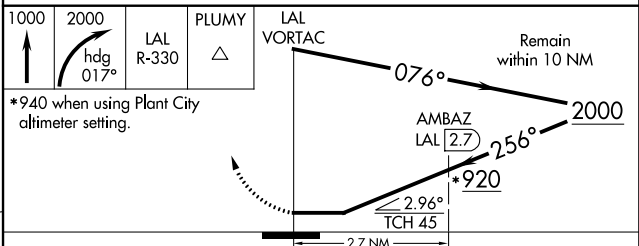
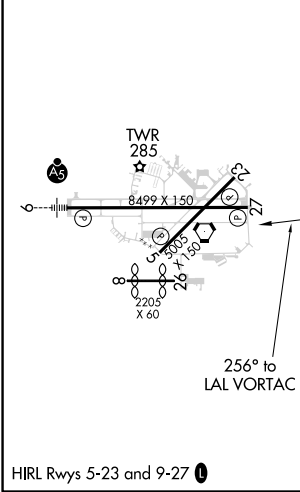
⚠ When local altimeter setting not received, use Plant City altimeter setting and increase all MDA 20 feet.  
 ⚠ Circling NA to Rws 8 and 26.

MISSED APPROACH: Climb to 1000 then climbing right turn to 2000 on heading 017° and on LAL VORTAC R-330 to PLUMY INT/PIE 33.4 DME and hold.

ATIS <b>118.025</b>	TAMPA APP CON <b>120.65 290.3</b>	LAKELAND TOWER ★ <b>124.5 (CTAF) 236.775</b>	GND CON <b>121.4</b>	UNICOM <b>122.95</b>
------------------------	--------------------------------------	-------------------------------------------------	-------------------------	-------------------------



ELEV <b>142</b>	<b>D</b>	TDZE <b>142</b>
-----------------	----------	-----------------



CATEGORY	A	B	C	D
S-27	920-1 778 (800-1)	920-1¼ 778 (800-1¼)	920-2½	778 (800-2½)
CIRCLING	920-1 778 (800-1)	920-1¼ 778 (800-1¼)	920-2½	778 (800-2½)
AMBAAZ FIX MINIMUMS				
S-27	540-1	398 (400-1)	540-1⅛	398 (400-1⅛)
CIRCLING	600-1 458 (500-1)	660-1 518 (600-1)	660-1½ 518 (600-1½)	700-2 558 (600-2)

SE-3: 23 MAY 2019 to 20 JUN 2019

SE-3: 23 MAY 2019 to 20 JUN 2019