

WAAS CH 78305 W09A	APP CRS 094°	Rwy Idg 8414 TDZE 132 Apt Elev 142
--	------------------------	---

RNAV (GPS) RWY 9

LAKELAND LINDER INTL (LAL)

RNP APCH:

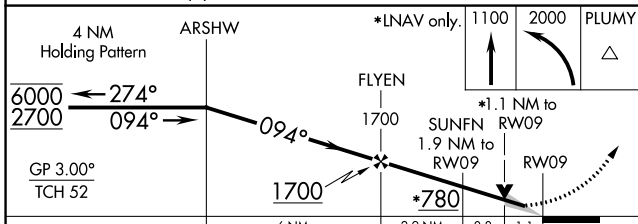
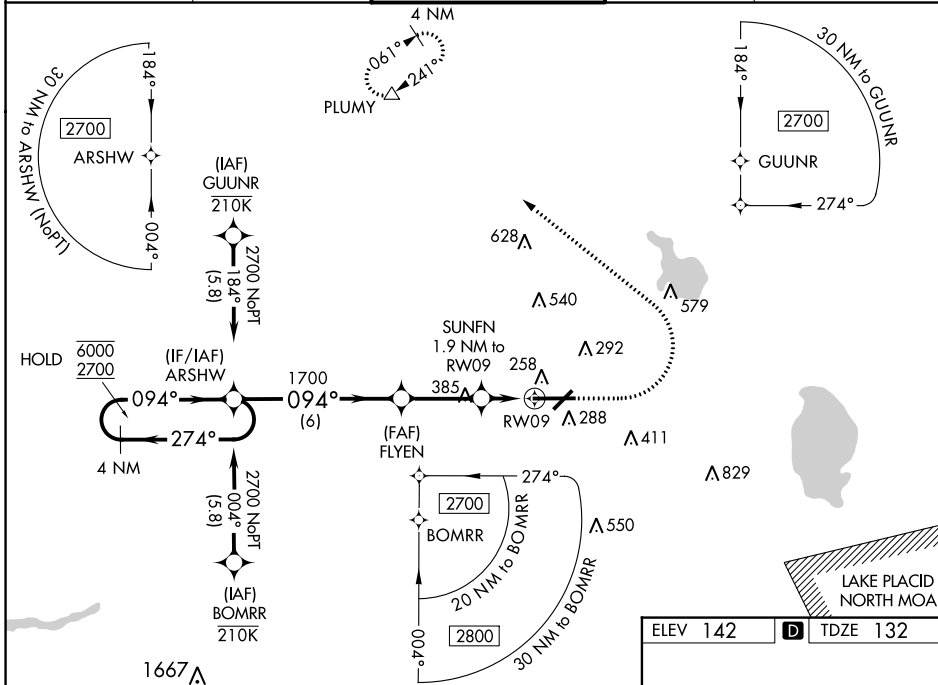
▼ For uncompensated Baro-VNAV systems, LNAV/VNAV NA below -15°C or above 54°C. Baro-VNAV and VDP NA when using Plant City altimeter setting. When local altimeter setting not received, use Plant City altimeter setting and increase all DA/MDA 20 feet, increase LNAV/VNAV all Cats visibility and LNAV Cats C/D visibility 1/8 SM. For inop ALS, increase LNAV/VNAV all Cats visibility to 1 1/8 SM. For inop ALS when using Plant City altimeter setting, increase LNAV/VNAV all Cats visibility to 1 SM. Circling NA to Rwy's 8 and 26.

MALSR

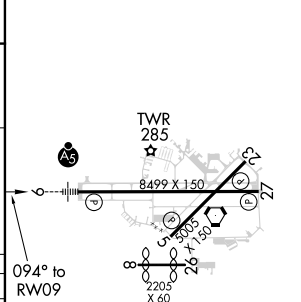


MISSED APPROACH:
Climb to 1100 then climbing left turn to 2000 direct PLUMY and hold.

ATIS 118.025	TAMPA APP CON 120.65 290.3	LAKELAND TOWER ★ 124.5 (CTAF) 236.775	GND CON 121.4	UNICOM 122.95
------------------------	--------------------------------------	---	-------------------------	-------------------------



ELEV 142	TDZE 132
----------	----------



CATEGORY	A	B	C	D
LPV DA		332-1/2	200 (200-1/2)	
LNAV/VNAV DA		439-1/2	307 (300-1/2)	
LNAV MDA	520-1/2	388 (400-1/2)	520-5/8	388 (400-5/8)
CIRCLING	600-1 458 (500-1)	660-1 518 (600-1)	660-1 1/2 518 (600-1 1/2)	700-2 558 (600-2)

HIRL Rwy's 5-23 and 9-27

SE-3, 23 MAY 2019 to 20 JUN 2019

SE-3, 23 MAY 2019 to 20 JUN 2019