

WAAS CH <b>42805</b> <b>W05A</b>	APP CRS <b>049°</b>	Rwy Idg TDZE <b>136</b> Apt Elev <b>142</b>	<b>5005</b>
--	------------------------	---	-------------

# RNAV (GPS) RWY 5

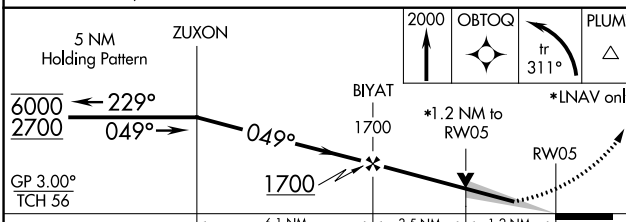
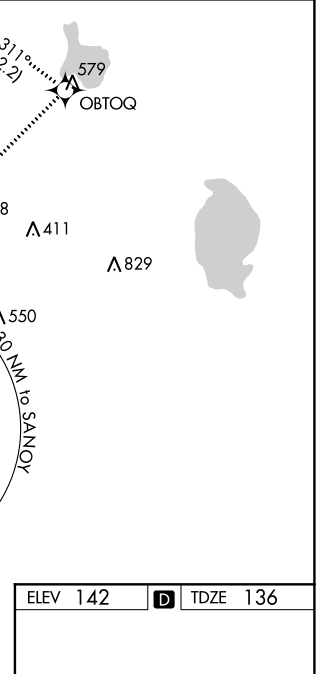
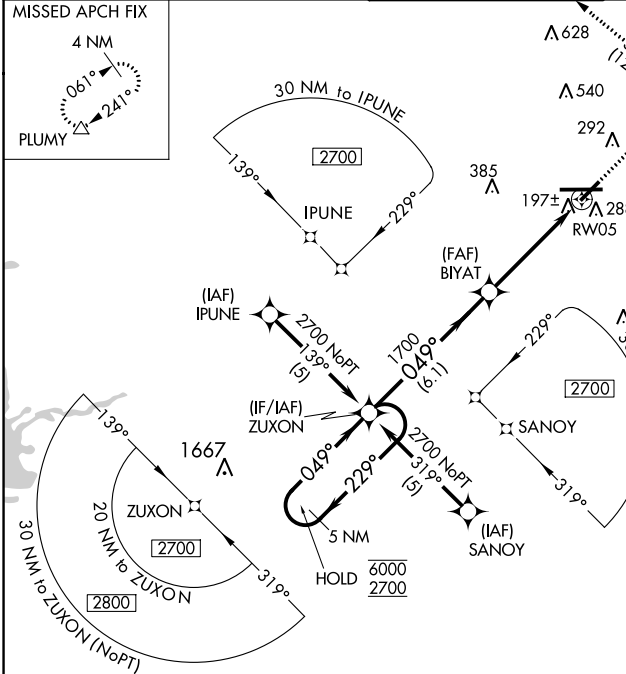
LAKELAND LINDER INTL (LAL)

RNP APCH.

**⚠** For uncompensated Baro-VNAV systems, LNAV/VNAV NA below -15°C or above 54°C. When local altimeter setting not received, use Plant City altimeter setting and increase all DA/MDA 20 feet and LNAV Cat C/D visibility 1/8 SM. Baro-VNAV and VDP NA when using Plant City altimeter setting. Circling NA to Rwy 8, 26.

MISSED APPROACH: Climb to 2000 direct OBTOQ and left turn on track 311° to PLUMY and hold.

ATIS <b>118.025</b>	TAMPA APP CON <b>120.65 290.3</b>	LAKELAND TOWER ★ <b>124.5 (CTAF) 0 236.775</b>	GND CON <b>121.4</b>	UNICOM <b>122.95</b>
------------------------	--------------------------------------	---	-------------------------	-------------------------



ELEV 142	<b>D</b> TDZE 136
----------	-------------------

CATEGORY	A	B	C	D
LPV DA		336-3/4	200 (200-3/4)	
LNAV/VNAV DA		505-1/4	369 (400-1/4)	
LNAV MDA	560-1	424 (500-1)	560-1/4	424 (500-1/4)
CIRCLING	600-1 458 (500-1)	660-1 518 (600-1)	660-1/2 518 (600-1/2)	700-2 558 (600-2)

HRL Rwy 5-23 and 9-27

SE-3, 23 MAY 2019 to 20 JUN 2019

SE-3, 23 MAY 2019 to 20 JUN 2019