

WAAS CH 82605 W 27A	APP CRS 274°	Rwy Idg TDZE 142 Apt Elev 142	8499
---	------------------------	---	-------------

RNAV (GPS) RWY 27

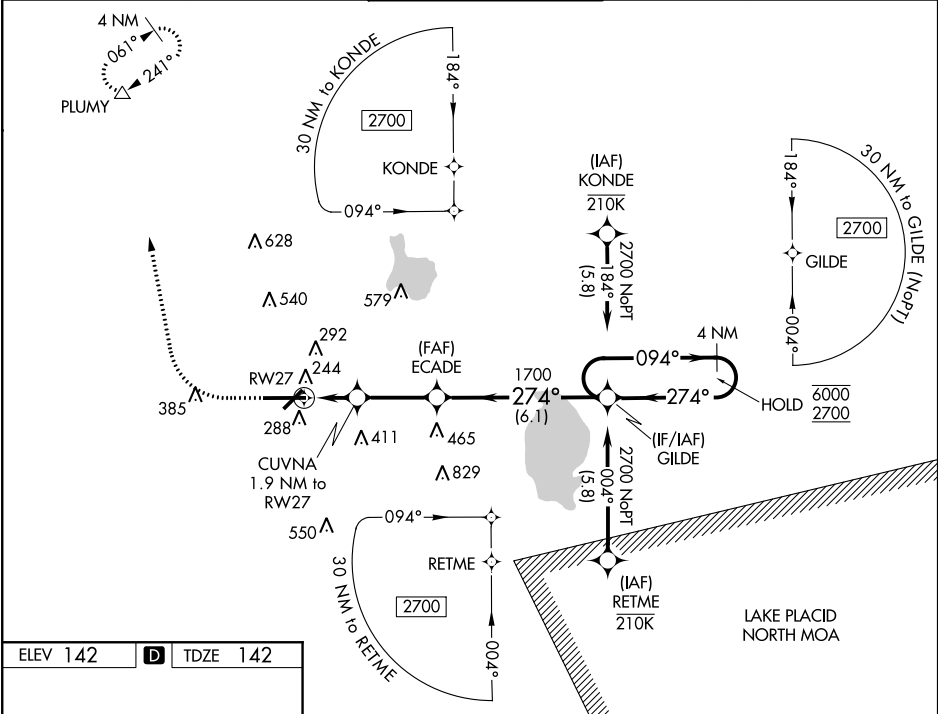
LAKELAND LINDER INTL (LAL)

RNP APCH.

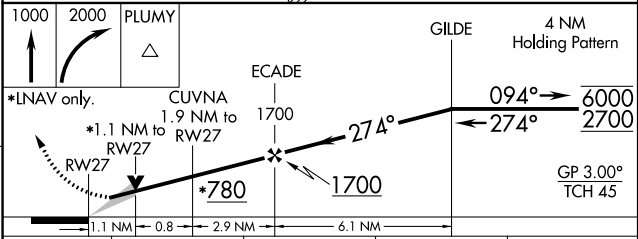
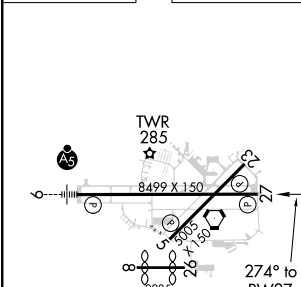
▼ For uncompensated Baro-VNAV systems, LNAV/VNAV NA below -15°C or above 54°C.
 ▲ When local altimeter setting not received, use Plant City altimeter setting and increase all DA/MDA 20 feet, and increase LNAV/VNAV all Cats and LNAV Cats C/D visibility 1/8 SM.
 Baro-VNAV and VDP NA when using Plant City altimeter setting. Circling NA to Rwy's 8 and 26.

MISSED APPROACH: Climb to 1000 then climbing right turn to 2000 direct PLUMY and hold.

ATIS 118.025	TAMPA APP CON 120.65 290.3	LAKELAND TOWER ★ 124.5 (CTAF) 236.775	GND CON 121.4	UNICOM 122.95
------------------------	--------------------------------------	---	-------------------------	-------------------------



ELEV 142	D	TDZE 142
----------	----------	----------



CATEGORY	A	B	C	D
LPV DA	342-3/4 200 (200-3/4)			
LNAV/VNAV DA	455-1 313 (400-1)			
LNAV MDA	560-1	418 (500-1)	560-1 1/8	418 (500-1 1/8)
CIRCLING	600-1 458 (500-1)	660-1 518 (600-1)	660-1 1/2 518 (600-1 1/2)	700-2 558 (600-2)

HIRL Rwy's 5-23 and 9-27

SE-3, 23 MAY 2019 to 20 JUN 2019

SE-3, 23 MAY 2019 to 20 JUN 2019