

WAAS CH 77805 W23A	APP CRS 229°	Rwy Idg 5005 TDZE 141 Apt Elev 142
--	------------------------	---

RNAV (GPS) RWY 23

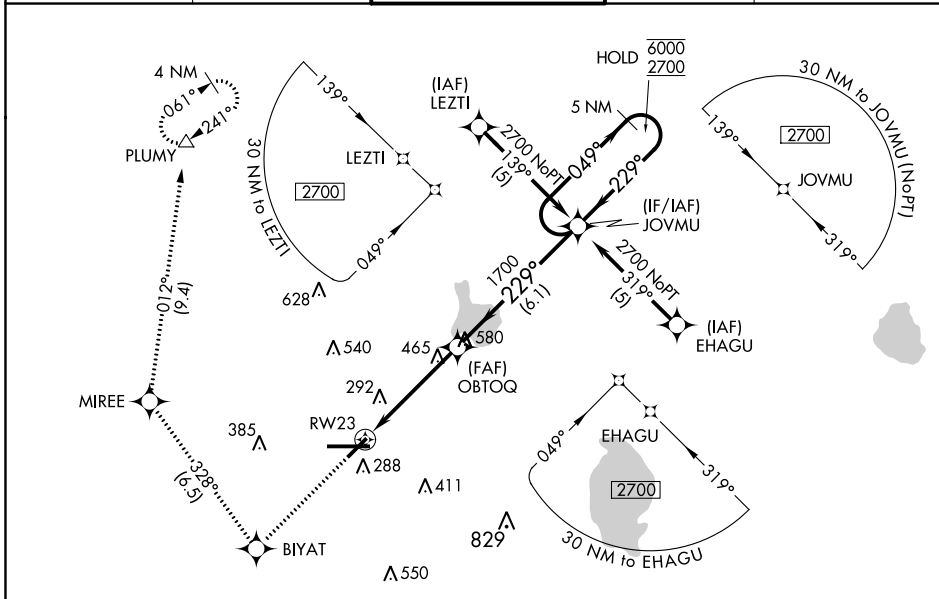
LAKELAND LINDER INTL (LAL)

RNP APCH.

▼ For uncompensated Baro-VNAV systems, LNAV/VNAV NA below -1.5°C or above 54°C.
▲ When local altimeter setting not received, use Plant City altimeter setting and increase all DA/MDA 20 feet and increase LNAV Cat C/D and Circling Cat C visibility 1/8 SM.
 Baro-VNAV and VDP NA when using Plant City altimeter setting. Rwy 23 helicopter visibility reduction below 3/4 SM NA. Circling NA to Rwy's 8 and 26.

MISSED APPROACH: Climb to 2000 direct BIYAT and right turn on track 328° to MIREE then on track 012° to PLUMY and hold.

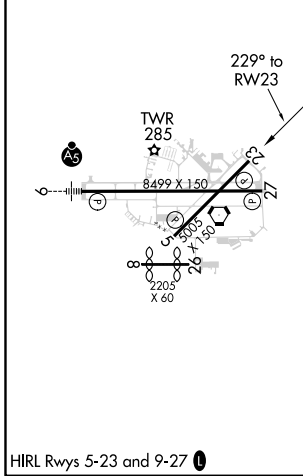
ATIS 118.025	TAMPA APP CON 120.65 290.3	LAKELAND TOWER ★ 124.5 (CTAF) 236.775	GND CON 121.4	UNICOM 122.95
------------------------	--------------------------------------	---	-------------------------	-------------------------



SE-3, 23 MAY 2019 to 20 JUN 2019

SE-3, 23 MAY 2019 to 20 JUN 2019

ELEV 142	D	TDZE 141
-----------------	----------	-----------------



2000	BIYAT	MIREE	tr 012°	PLUMY	JOVMU	5 NM Holding Pattern
*LNAV only.						
OBTOQ						
1.7 NM to RWY 23						
1700						
049° → 6000						
← 229° 2700						
GP 3.00° TCH 50						
1.7 NM 3 NM 6.1 NM						
CATEGORY	A	B	C	D		
LPV DA	426-1 285 (300-1)					
LNAV/VNAV DA	480-1¼ 339 (400-1¼)					
LNAV MDA	720-1	579 (600-1)	720-1½ 579 (600-1½)	720-1¾ 579 (600-1¾)		
CIRCLING	720-1	578 (600-1)	720-1½ 578 (600-1½)	720-2 578 (600-2)		