

WLSTN SEVEN DEPARTURE

AL-264 (FAA)

MINNEAPOLIS, MINNESOTA

NC-1, 23 MAY 2019 to 20 JUN 2019

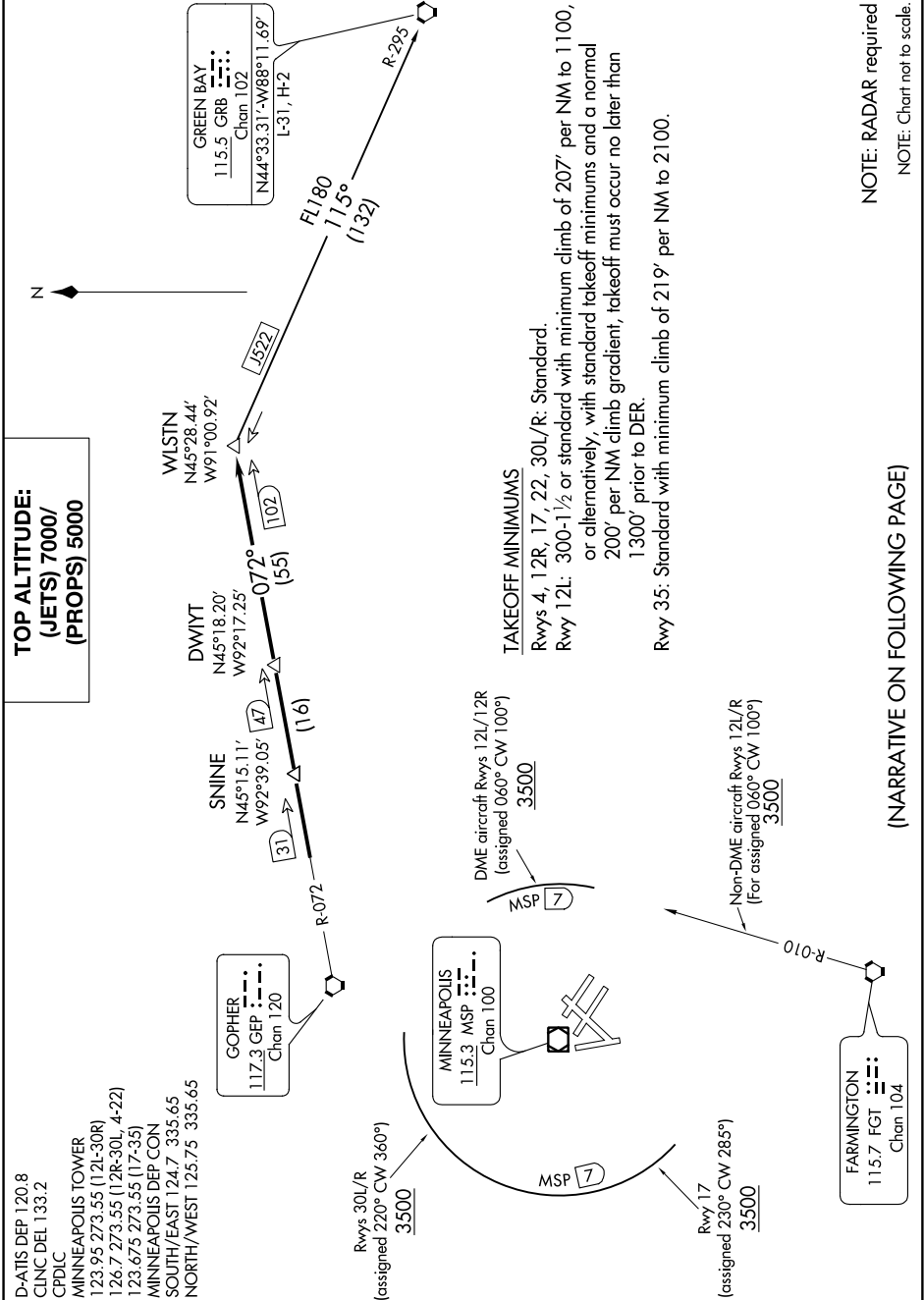
**TOP ALTITUDE:
(JETS) 7000/
(PROPS) 5000**

D-ATIS DEP 120.8
 CLNC DEL 133.2
 CPDLC
 MINNEAPOLIS TOWER
 123.95 273.55 (12L-30R)
 126.7 273.55 (12R-30L, 4-22)
 123.675 273.55 (17-35)
 MINNEAPOLIS DEP CON
 SOUTH/EAST 124.7 335.65
 NORTH/WEST 125.75 335.65

GOPHER
 117.3 GEP
 Chan 120

MINNEAPOLIS
 115.3 MSP
 Chan 100

FARMINGTON
 115.7 FGT
 Chan 104



TAKEOFF MINIMUMS

Rwys 4, 12R, 17, 22, 30L/R: Standard.
 Rwy 12L: 300-1½ or standard with minimum climb of 207' per NM to 1100, or alternatively, with standard takeoff minimums and a normal 200' per NM climb gradient; takeoff must occur no later than 1300' prior to DER.
 Rwy 35: Standard with minimum climb of 219' per NM to 2100.

(NARRATIVE ON FOLLOWING PAGE)

NOTE: RADAR required
 NOTE: Chart not to scale.

NC-1, 23 MAY 2019 to 20 JUN 2019