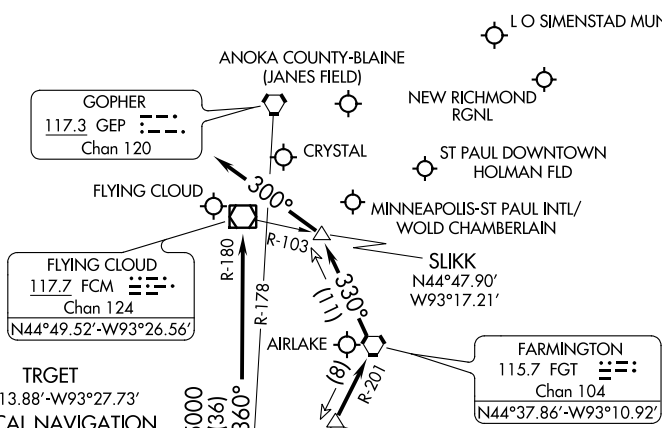


TWOLF THREE ARRIVAL

AL-264 (FAA)

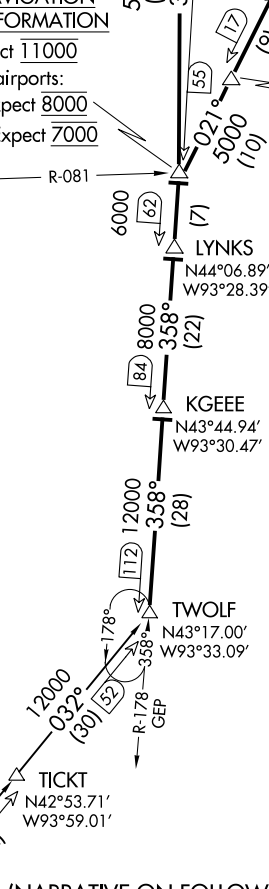
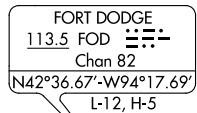
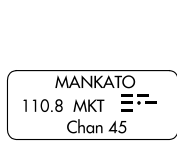
MINNEAPOLIS, MINNESOTA

MINNEAPOLIS APP CON
 126.95 335.5
 118.725 (MSP RWY 35)
 ANOKA COUNTY ATIS
 120.625
 CRYSTAL ATIS
 124.475
 FLYING CLOUD ATIS
 124.9
 MINNEAPOLIS D-ATIS ARR
 135.35 239.275
 ST PAUL DOWNTOWN ATIS
 118.35



TRGET
 N44°13.88'-W93°27.73'
**VERTICAL NAVIGATION
 PLANNING INFORMATION**

MSP: Expect 11000
 All other airports:
 Turbojets: Expect 8000
 Turboprops: Expect 7000



NOTE: DME and RADAR required.

(NARRATIVE ON FOLLOWING PAGE)

NOTE: Chart not to scale.

NC-1, 23 MAY 2019 to 20 JUN 2019

NC-1, 23 MAY 2019 to 20 JUN 2019

TWOLF THREE ARRIVAL

MINNEAPOLIS, MINNESOTA