

|  |                        |   |
|--|------------------------|---|
| WAAS<br>CH <b>90128</b><br><b>W35A</b> | APP CRS<br><b>350°</b> | Rwy Idg<br>TDZE <b>834</b><br>Apt Elev <b>842</b> |
|--|------------------------|---|

# RNAV (GPS) Z RWY 35

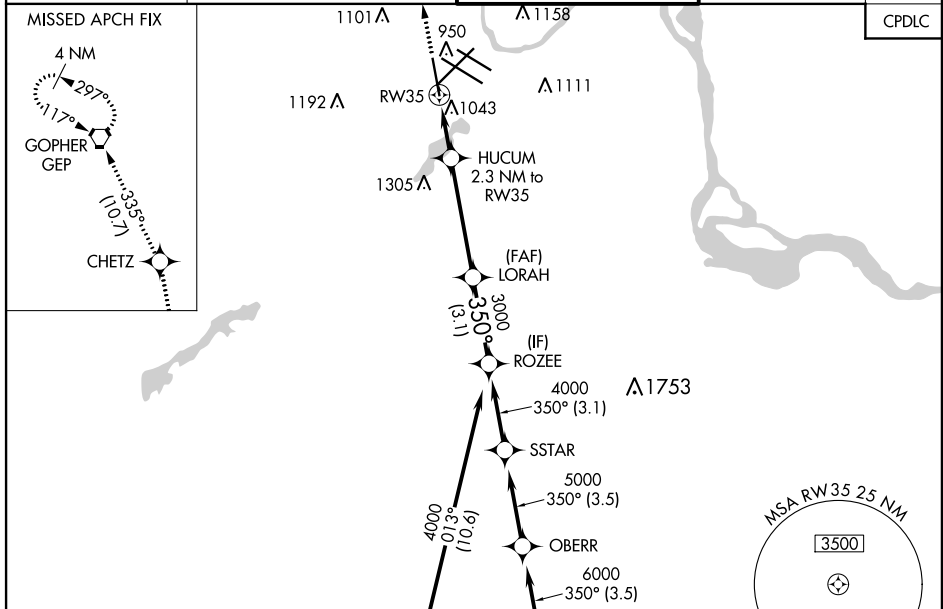
MINNEAPOLIS-ST PAUL INTL/WOLD-CHAMBERLAIN (MSP)

**⚠** For uncompensated Baro-VNAV systems, LNAV/VNAV NA below -19°C (-2°F) or above 54°C (130°F). DME/DME RNP-0.3 NA. For inop ALS, increase LPV Cat E visibility to RVR 4000, LNAV/VNAV Cat E visibility to 1¼ SM and LNAV Cats C/D/E visibility to 1½ SM.

ALSIF-2

**MISSED APPROACH:** Climb to 3000 direct CHETZ and on track 335° to GEP VORTAC and hold.

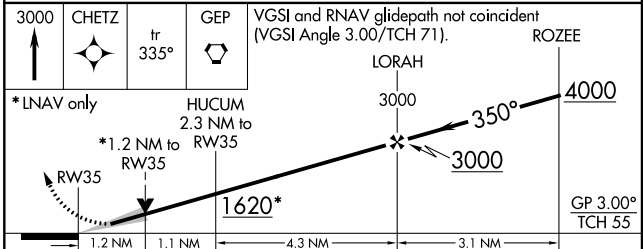
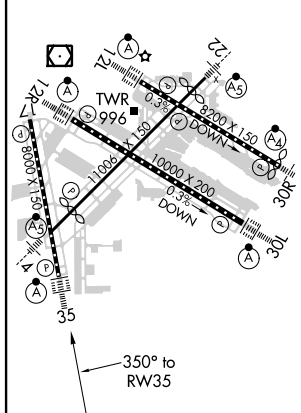
|   |  |   |   |                          |
|---|--|---|---|--------------------------|
| D-ATIS<br>ARR <b>135.35 239.275</b><br>DEP <b>120.8</b> | MINNEAPOLIS APP CON<br><b>118.725 335.65</b> (Rwy 35)<br><b>119.3 335.65</b> (12L-30R, 4-22, 17)<br><b>126.95 335.65</b> (12R-30L) | MINNEAPOLIS TOWER<br><b>123.675 273.55</b> (17-35)<br><b>123.95 273.55</b> (12L-30R)<br><b>126.7 273.55</b> (12R-30L, 4-22) | GND CON<br><b>N 121.8 348.6</b><br><b>S 121.9 348.6</b><br><b>W 127.925 348.6</b> | CLNC DEL<br><b>133.2</b> |
|---|--|---|---|--------------------------|



|                 |          |                 |
|-----------------|----------|-----------------|
| ELEV <b>842</b> | <b>D</b> | TDZE <b>834</b> |
|-----------------|----------|-----------------|

HIRL all Rwys  
REIL Rwy 17

TDZ/CL Rwys 12L, 12R, 30L, and 35



| CATEGORY          | A       | B           | C                       | D                       | E                      |
|-------------------|---------|-------------|-------------------------|-------------------------|------------------------|
| LPV DA            |         | 1034/18     | 200 (200-½)             |                         |                        |
| LNAV/VNAV DA      |         | 1204/40     | 370 (400-¾)             |                         |                        |
| LNAV MDA          | 1300/24 | 466 (500-½) | 1300/50                 | 466 (500-1)             |                        |
| <b>C</b> CIRCLING | 1360-1  | 518 (600-1) | 1460-1¾<br>618 (700-1¾) | 1660-2¾<br>818 (900-2¾) | 1800-3<br>958 (1000-3) |

NC-1, 23 MAY 2019 to 20 JUN 2019

NC-1, 23 MAY 2019 to 20 JUN 2019