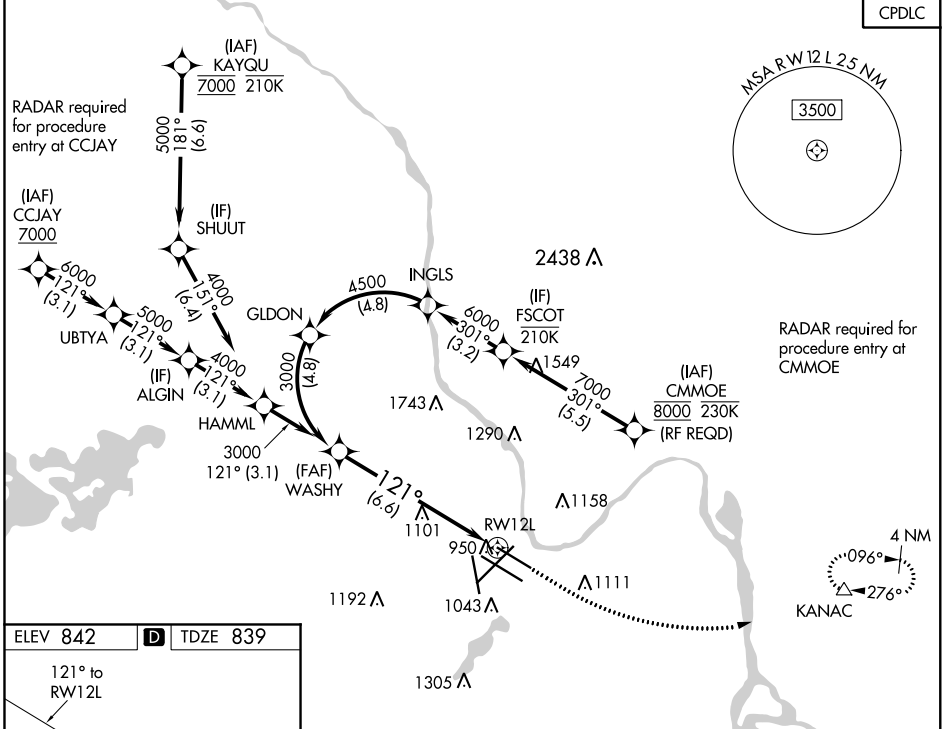


APP CRS	Rwy Idg	7620
121°	TDZE	839
	Apt Elev	842

RNAV (RNP) Y RWY 12L

MINNEAPOLIS-ST PAUL INTL/WOLD-CHAMBERLAIN (MSP)

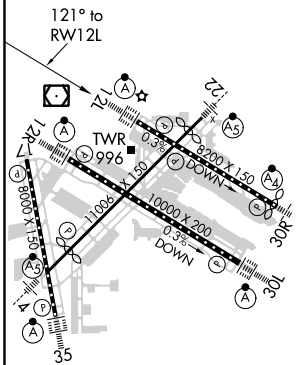
<p>▼ For uncompensated Baro-VNAV systems, procedure NA below -20°C (-4°F) or above 54°C (130°F). GPS required.</p> <p>ALSIF-2</p>	<p>MISSED APPROACH: Climb to 1300 then climbing left turn to 3000 direct KANAC and hold.</p>				
	<p>D-ATIS</p> <p>ARR 135.35 239.275</p> <p>DEP 120.8</p>	<p>MINNEAPOLIS APP CON</p> <p>118.725 335.65 (Rwy 35)</p> <p>119.3 335.65 (12L-30R, 4-22, 17)</p> <p>126.95 335.65 (12R-30L)</p>	<p>MINNEAPOLIS TOWER</p> <p>123.675 273.55 (17-35)</p> <p>123.95 273.55 (12L-30R)</p> <p>126.7 273.55 (12R-30L, 4-22)</p>	<p>GND CON</p> <p>N 121.8 348.6</p> <p>S 121.9 348.6</p> <p>W 127.925 348.6</p>	<p>CLNC DEL</p> <p>133.2</p>
	<p>CPDLC</p>				



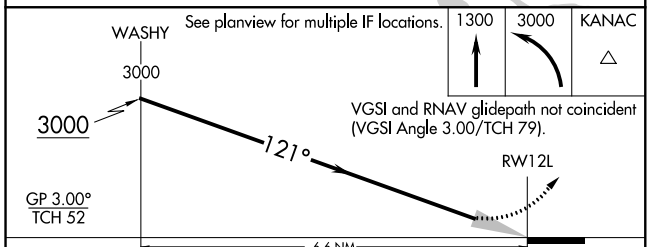
NC-1, 23 MAY 2019 to 20 JUN 2019

NC-1, 23 MAY 2019 to 20 JUN 2019

ELEV 842	D	TDZE 839
----------	----------	----------



HIRL all Rwys
REIL Rwy 17
TDZ/CL Rwys 12L, 12R, 30L, and 35



GP 3.00°	TCH 52			
CATEGORY	A	B	C	D
RNP 0.15 DA	1150/24 311 (400-½)			
RNP 0.30 DA	1241/45 402 (400-⅔)			

AUTHORIZATION REQUIRED