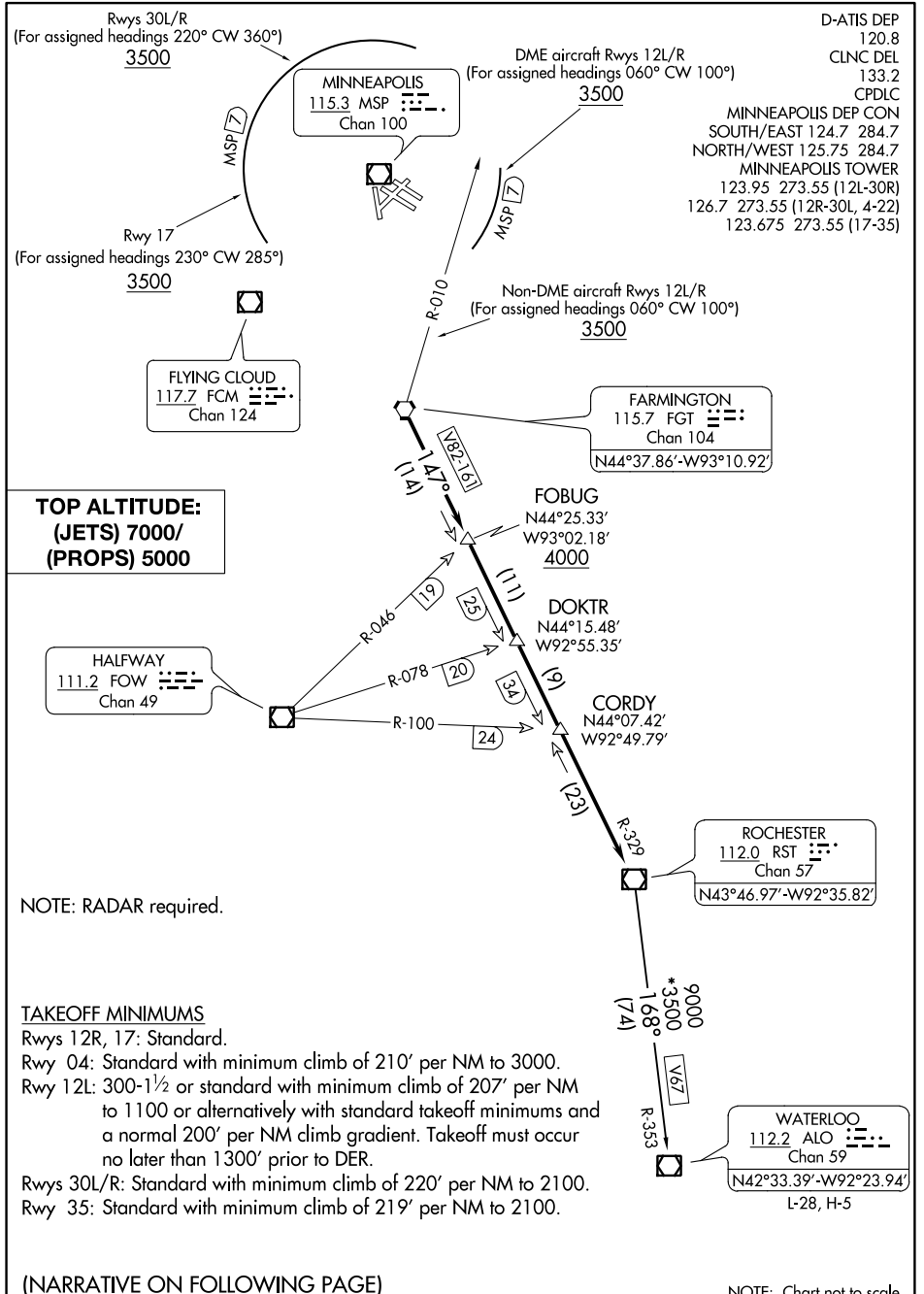


ROCHESTER ONE DEPARTURE

AL-264 (FAA)

MINNEAPOLIS, MINNESOTA



D-ATIS DEP 120.8
 CLNC DEL 133.2
 CPDLC
 MINNEAPOLIS DEP CON
 SOUTH/EAST 124.7 284.7
 NORTH/WEST 125.75 284.7
 MINNEAPOLIS TOWER
 123.95 273.55 (12L-30R)
 126.7 273.55 (12R-30L, 4-22)
 123.675 273.55 (17-35)

TOP ALTITUDE:
(JETS) 7000/
(PROPS) 5000

NOTE: RADAR required.

TAKEOFF MINIMUMS
 Rwys 12R, 17: Standard.
 Rwy 04: Standard with minimum climb of 210' per NM to 3000.
 Rwy 12L: 300-1½ or standard with minimum climb of 207' per NM to 1100 or alternatively with standard takeoff minimums and a normal 200' per NM climb gradient. Takeoff must occur no later than 1300' prior to DER.
 Rwys 30L/R: Standard with minimum climb of 220' per NM to 2100.
 Rwy 35: Standard with minimum climb of 219' per NM to 2100.

(NARRATIVE ON FOLLOWING PAGE)

NOTE: Chart not to scale.

ROCHESTER ONE DEPARTURE

MINNEAPOLIS, MINNESOTA

NC-1, 23 MAY 2019 to 20 JUN 2019

NC-1, 23 MAY 2019 to 20 JUN 2019