

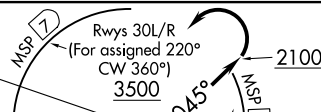
# ORSKY TWO DEPARTURE

D-ATIS DEP  
120.8  
CLNC DEL  
133.2  
CPDLC

MINNEAPOLIS TOWER  
123.95 273.55 (12L-30R)  
126.7 273.55 (12R-30L, 4-22)  
123.675 273.55 (17-35)  
MINNEAPOLIS DEP CON  
SOUTH/EAST 124.7 284.7  
NORTH/WEST 125.75 284.7

**MINNEAPOLIS**  
115.3 MSP  
Chan 100  
N44°53.79'-W93°14.19'

Rwy 17  
(For assigned 230°  
CW 285°)  
3500



DME aircraft  
Rwys 12L/R  
(For assigned 060°  
CW 100°)  
3500

Non-DME aircraft  
Rwys 12L/R  
(For assigned 060° CW 100°)  
3500

**FARMINGTON**  
115.7 FGT  
Chan 104

**HALFWAY**  
111.2 FOW  
Chan 49

**TOP ALTITUDE:  
ASSIGNED BY ATC**

NOTE: RADAR required.

**PEDLN**  
N44°12.16'  
W93°48.02'

**JURNY**  
N44°36.52'  
W93°28.34'

**RUMLE**  
N44°25.28'  
W93°37.47'

### TAKEOFF MINIMUMS

Rwys 4, 12R, 17, 22, 30L/R: Standard.  
Rwy 12L: 300-1½ or standard with minimum climb of 207' per NM to 1100, or alternatively, with standard takeoff minimums and a normal 200' per NM climb gradient, takeoff must occur no later than 1300' prior to DER.  
Rwy 35: Standard with minimum climb of 219' per NM to 2100.

**ORSKY**  
N43°40.19'  
W94°13.38'

**ONTIJ**  
N43°17.86'  
W94°30.77'  
12000 (MRA)

**GOOLD**  
N42°57.52'  
W94°42.85'

**SIMJI**  
N42°49.56'  
W94°47.52'

**EYHUX**  
N42°26.13'  
W95°01.16'

**TODDO**  
N41°50.54'  
W95°21.52'

**FORT DODGE**  
113.5 FOD  
Chan 82  
N42°36.67'-W94°17.69'  
L-12, H-5

**MASON CITY**  
114.9 MCW  
Chan 96

**DES MOINES**  
117.5 DSM  
Chan 122

**OMAHA**  
116.3 OVR  
Chan 110  
N41°10.03'-W95°44.21'  
L-10-12, H-5

(NARRATIVE ON FOLLOWING PAGE) NOTE: Chart not to scale.

NC-1, 23 MAY 2019 to 20 JUN 2019

NC-1, 23 MAY 2019 to 20 JUN 2019