

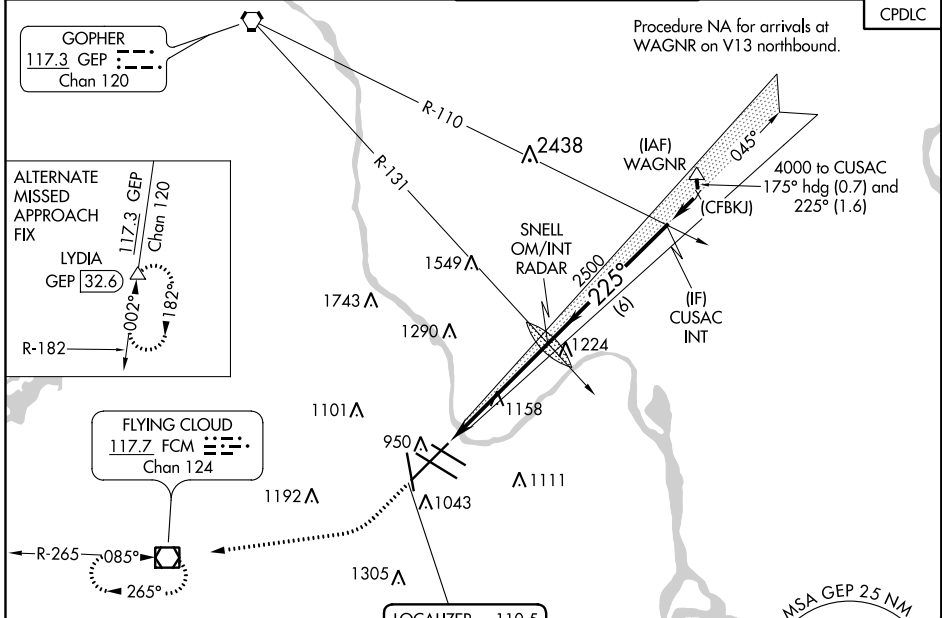
LOC I-SIJ 110.5	APP CRS 225°	Rwy ldg 10006
		TDZE 828
		Apt Elev 842

LOC RWY 22

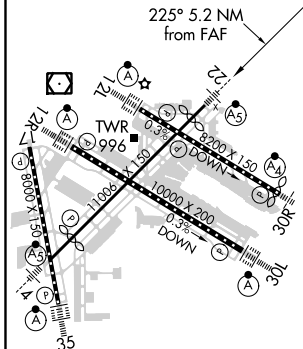
MINNEAPOLIS-ST PAUL INTL/WOLD-CHAMBERLAIN (MSP)

<p>For inoperative MALSR, increase S-22 Cat A and B visibility to RVR 5000 and Cat E visibility to 1/4 miles.</p>	<p>MALSR</p>	<p>MISSED APPROACH: Climb to 2000 then climbing right turn to 3000 direct FCM VOR/DME and hold.</p>

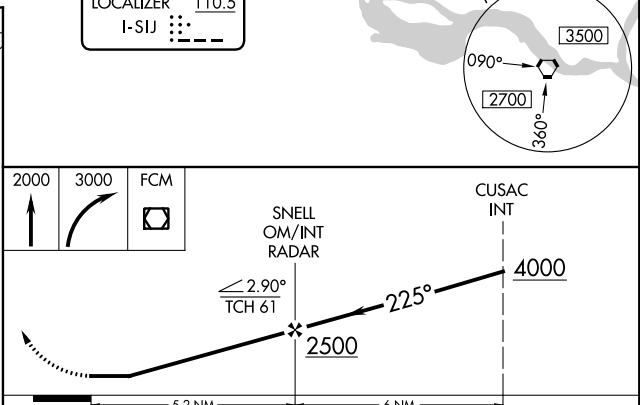
D-ATIS ARR 135.35 239.275 DEP 120.8	MINNEAPOLIS APP CON 118.725 335.65 (Rwy 35) 119.3 335.65 (12L-30R, 4-22, 17) 126.95 335.65 (12R-30L)	MINNEAPOLIS TOWER 123.675 273.55 (17-35) 123.95 273.55 (12L-30R) 126.7 273.55 (12R-30L, 4-22)	GND CON N 121.8 348.6 S 121.9 348.6 W 127.925 348.6	CLNC DEL 133.2
---	--	---	---	--------------------------



ELEV 842	D TDZE 828
----------	-------------------



HIRL all Rwws REIL Rwy 17 TDZ/CL Rwws 12L, 12R, 30L, and 35				
Knots				
60	90	120	150	180
Min:Sec				
5:12	3:28	2:36	2:05	1:44



CATEGORY	A	B	C	D	E
S-22	1420/40	592 (600-3/4)	1420-1/4	592 (600-1/4)	
C CIRCLING	1420-1	578 (600-1)	1460-3/4 618 (700-1/4)	1660-2/4 818 (900-2/4)	1800-3 958 (1000-3)

LOC RWY 22

NC-1, 23 MAY 2019 to 20 JUN 2019

NC-1, 23 MAY 2019 to 20 JUN 2019