

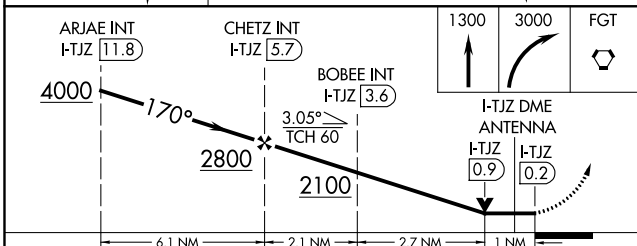
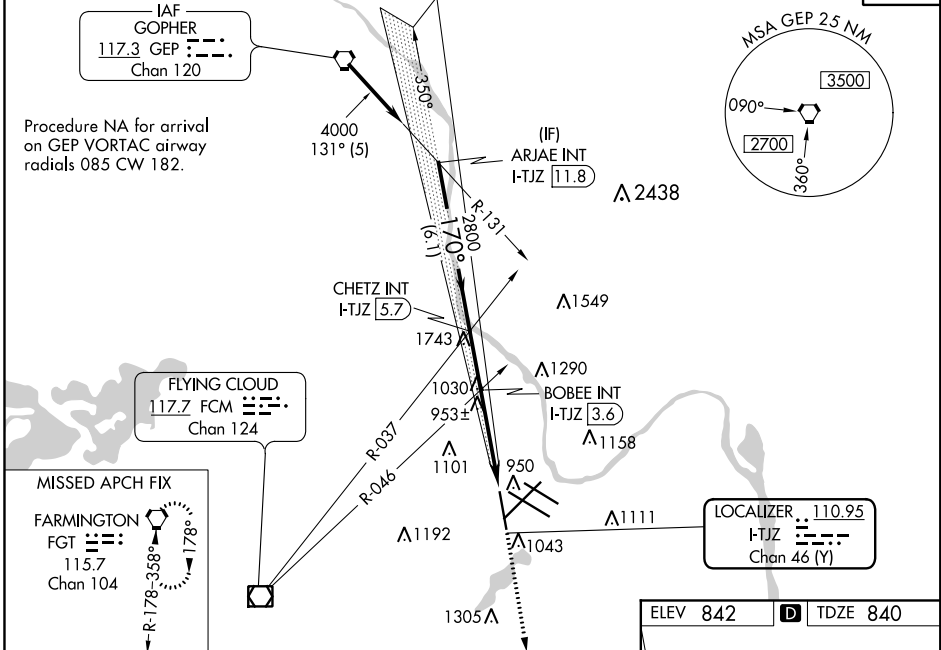
| | | |
|---|------------------------|---|
| LOC/DME I-TJZ 110.95 Chan 46 (Y) | APP CRS 170° | Rwy Idg 8000 TDZE 840 Apt Elev 842 |
|---|------------------------|---|

LOC RWY 17

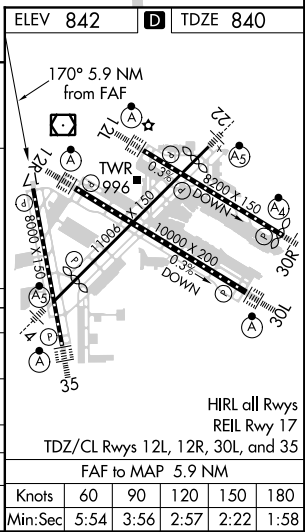
MINNEAPOLIS-ST PAUL INTL/WOLD-CHAMBERLAIN (MSP)

| | |
|---|---|
| ⚠ Helicopter visibility reduction below RVR 4000 NA. | MISSED APPROACH: Climb to 3000 then climbing right turn to 3000 direct FGT VORTAC and hold. |
|---|---|

| | | | | |
|---|--|---|---|--------------------------|
| D-ATIS ARR 135.35 239.275 DEP 120.8 | MINNEAPOLIS APP CON 118.725 335.65 (Rwy 35) 119.3 335.65 (12L-30R, 4-22, 17) 126.95 335.65 (12R-30L) | MINNEAPOLIS TOWER 123.675 273.55 (17-35) 123.95 273.55 (12L-30R) 126.7 273.55 (12R-30L, 4-22) | GND CON N 121.8 348.6 S 121.9 348.6 W 127.925 348.6 | CLNC DEL 133.2 |
|---|--|---|---|--------------------------|



| CATEGORY | A | B | C | D |
|---|---------------------------|---------------------------|-------------------------|-------------------------|
| S-17 | 2100/60 1260 (1300-1½) | 2100-1½ 1260 (1300-1½) | 2100-3 | 1260 (1300-3) |
| C CIRCLING | 2100-1¼ 1258 (1300-1¼) | 2100-1½ 1258 (1300-1½) | 2100-3 | 1258 (1300-3) |
| BOBEE FIX MINIMUMS (DUAL VOR RECEIVERS OR DME REQUIRED) | | | | |
| S-17 | 1220/55 | | 380 (400-1) | |
| C CIRCLING | 1360-1 | 518 (600-1) | 1460-1¾ 618 (700-1¾) | 1660-2¾ 818 (900-2¾) |



NC-1, 23 MAY 2019 to 20 JUN 2019

NC-1, 23 MAY 2019 to 20 JUN 2019