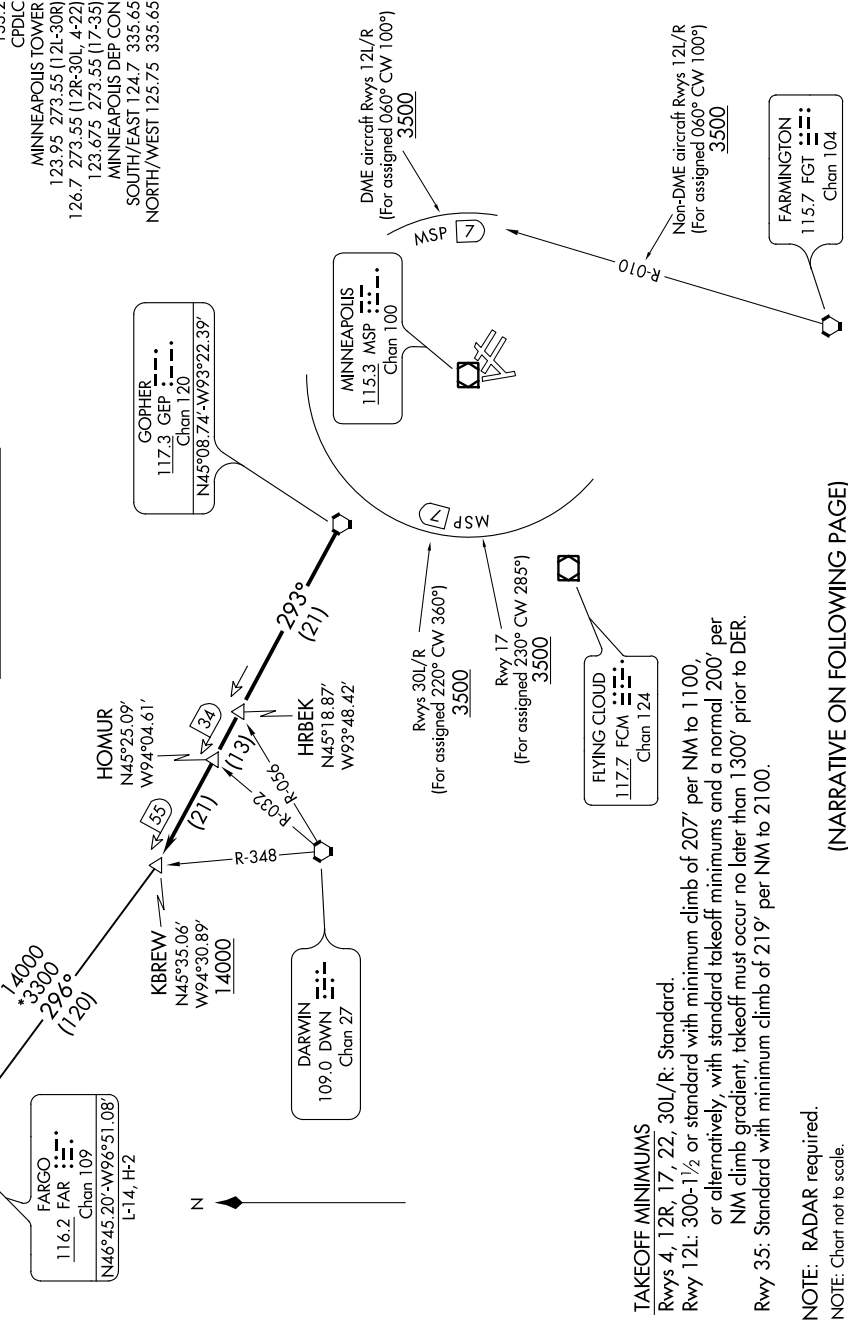


D-AITS DEP  
120.8  
CLNCDEL  
133.2  
CPDLC  
MINNEAPOLIS TOWER  
123.95 273.55 (12L-30R)  
126.7 273.55 (12R-30L, 4-22)  
123.675 273.55 (17-35)  
MINNEAPOLIS DEP CON  
SOUTH/EAST 124.7 335.65  
NORTH/WEST 125.75 335.65

**TOP ALTITUDE:  
ASSIGNED BY ATC**



**TAKEOFF MINIMUMS**  
Rwys 4, 12R, 17, 22, 30L/R: Standard.  
Rwy 12L: 300-1½ or standard with minimum climb of 207' per NM to 1100, or alternatively, with standard takeoff minimums and a normal 200' per NM climb gradient, takeoff must occur no later than 1300' prior to DER.  
Rwy 35: Standard with minimum climb of 219' per NM to 2100.

**NOTE:** RADAR required.  
**NOTE:** Chart not to scale.

(NARRATIVE ON FOLLOWING PAGE)