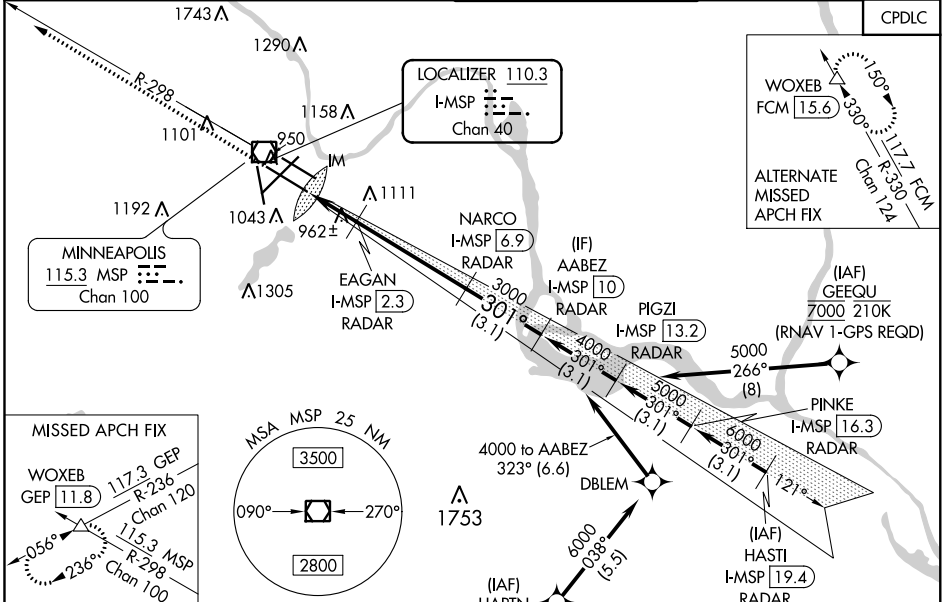


LOC/DME I-MSP 110.3 Chan 40	APP CRS 301°	Rwy Idg TDZE 823 Apt Elev 842	10000
---	------------------------	---	--------------

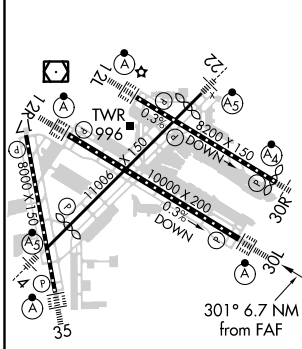
ILS or LOC RWY 30L

MINNEAPOLIS-ST PAUL INTL/WOLD-CHAMBERLAIN (MSP)

<p>▼ DME or RADAR required. Simultaneous approaches authorized with Rwy 30R and ILS V Rwy 35 (CONVERGING). For inop ALS, increase S-ILS 30L Cat E visibility to RVR 4000, and increase S-LOC 30L Cat E visibility to RVR 6000.</p>	<p>ALS-F-2 </p>	<p>MISSED APPROACH: Climb to 1300 then climb to 3000 on heading 301° and MSP VOR/DME R-298 to WOXEB INT/ GEP VORTAC 11.8 DME and hold.</p>		<p>CLNC DEL 133.2</p>
		<p>D-ATIS ARR 135.35 239.275 DEP 120.8</p>	<p>MINNEAPOLIS APP CON 118.725 335.65 (Rwy 35) 119.3 335.65 (12L-30R, 4-22, 17) 126.95 335.65 (12R-30L)</p>	

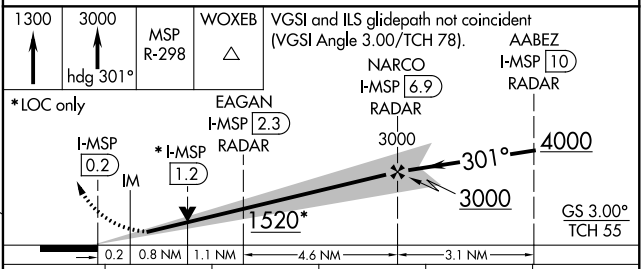


ELEV 842	D	TDZE 823
-----------------	----------	-----------------



HIRL all Rwys
REIL Rwy 17
TDZ/CL Rwys 12L, 12R, 30L, and 35
FAF to MAP 6.7 NM

Knots	60	90	120	150	180
Min:Sec	6:42	4:28	3:21	2:41	2:14



CATEGORY	A	B	C	D	E
S-ILS 30L	1023/18 200 (200-1/2)				
S-LOC 30L	1220/24	397 (400-1/2)	1220/35 397 (400-5/8)		
C CIRCLING	1360-1	518 (600-1)	1460-1 3/4 618 (700-1 1/2)	1660-2 3/4 818 (900-2 3/4)	1800-3 958 (1000-3)

ILS or LOC RWY 30L

NC-1, 23 MAY 2019 to 20 JUN 2019

NC-1, 23 MAY 2019 to 20 JUN 2019