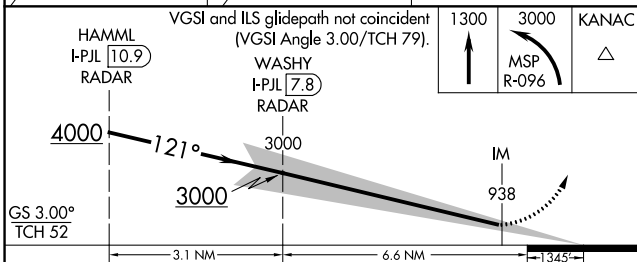
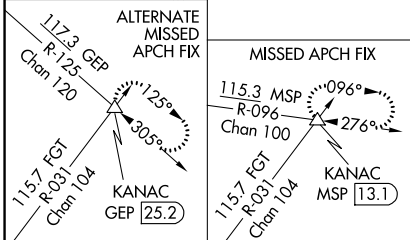
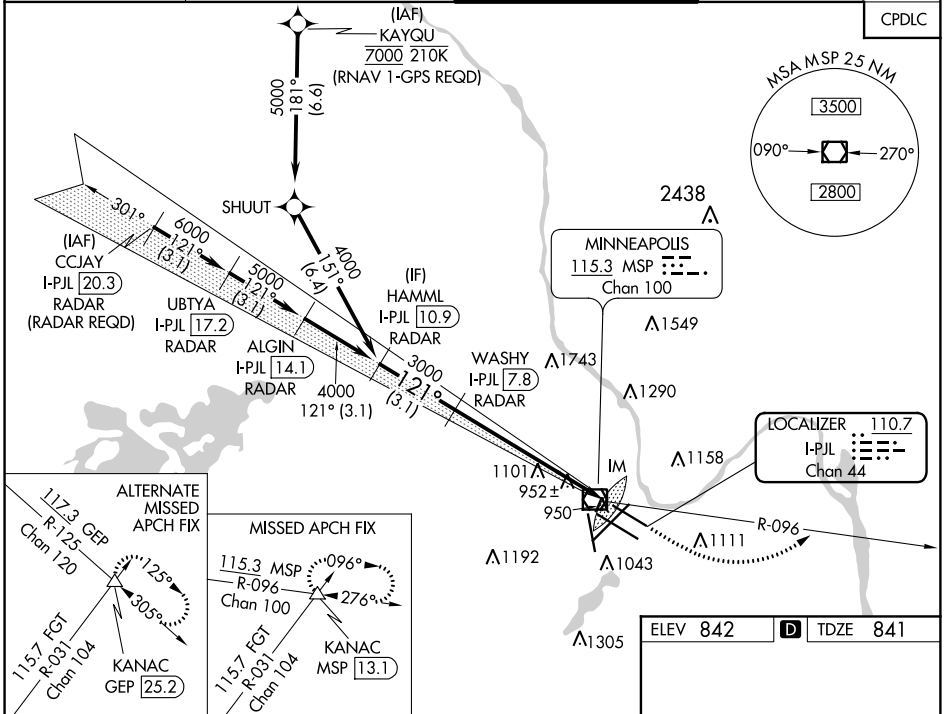


LOC/DME I-PJL <b>110.7</b> Chan <b>44</b>	APP CRS <b>121°</b>	Rwy Idg TDZE Apt Elev	<b>7620</b> <b>841</b> <b>842</b>
---	------------------------	-----------------------------	---

# ILS RWY 12L (CAT II & III)

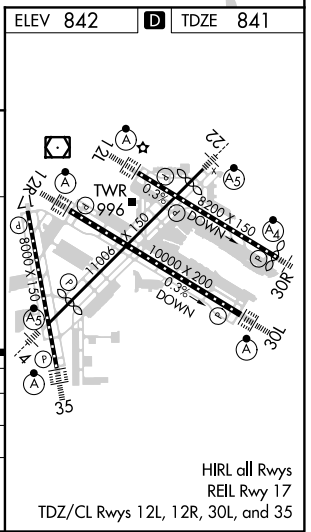
MINNEAPOLIS-ST PAUL INTL/WOLD-CHAMBERLAIN (MSP)

<p><b>⚠</b> Simultaneous approach authorized with Rwy 12R. CAT II: RVR 1000 authorized with specific OPSPEC, MSPEC, or LOA approval and use of autoland or HUD to touchdown. DME or RADAR required.</p>	<p>MINNEAPOLIS APP CON</p> <p>ARR <b>135.35 239.275</b>    <b>118.725 335.65</b> (Rwy 35) DEP <b>120.8</b>            <b>119.3 335.65</b> (12L-30R, 4-22, 17)                          <b>126.95 335.65</b> (12R-30L)</p>		<p>MINNEAPOLIS TOWER</p> <p><b>123.675 273.55</b> (17-35) <b>123.95 273.55</b> (12L-30R) <b>126.7 273.55</b> (12R-30L, 4-22)</p>		<p>GND CON</p> <p><b>N 121.8 348.6</b> <b>S 121.9 348.6</b> <b>W 127.925 348.6</b></p>		<p>CLNC DEL <b>133.2</b></p>
	<p>ALSIF-2</p> <p><b>MISSED APPROACH:</b> Climb to 1300, then climbing left turn to 3000 on MSP VOR/DME R-096 to KANAC INT/MSP 13.1 DME and hold.</p>						



CATEGORY	A	B	C	D
S-ILS 12L	CAT II RA 91/12 100 DA 941			
S-ILS 12L	CAT III RVR 07			

**CATEGORY II & III ILS - SPECIAL AIRCREW & AIRCRAFT CERTIFICATION REQUIRED**



NC-1, 23 MAY 2019 to 20 JUN 2019

NC-1, 23 MAY 2019 to 20 JUN 2019

HIRL all Rwys  
REIL Rwy 17  
TDZ/CL Rwys 12L, 12R, 30L, and 35